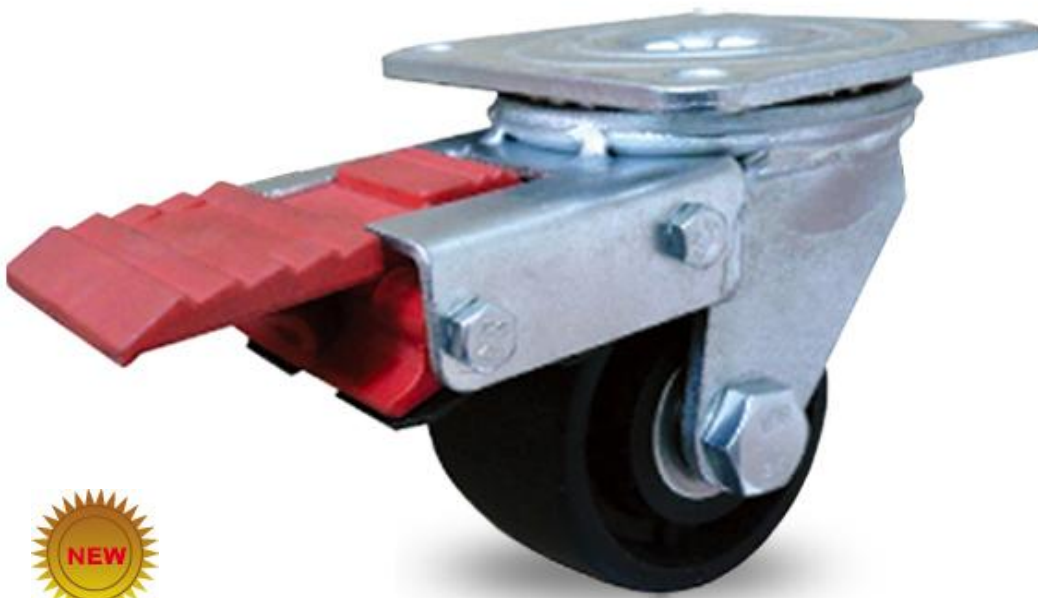


LOW PROFILE HEAVY DUTY CASTERS

Business Machine Casters

Wheel Dia. 2"-3"

Capacity up to 1200lbs



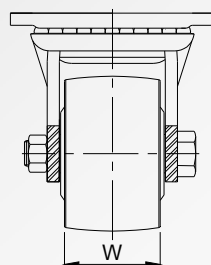
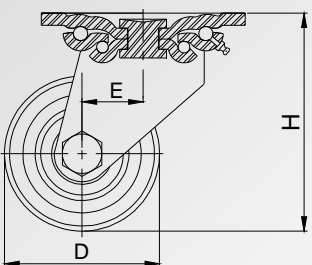
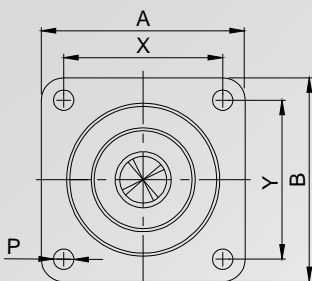
Low Profile Heavy Duty Casters – Low Profile Business Machine Casters

Provides maximum weight distribution at lowest possible overall height. Designed for business machines and other OEM products including medical equipment and electrical/electronic enclosures, Zerk fitting in raceway for easy-access lubrication, Features Zinc plating to prevent corrosion or black powder-coated finish.

| SPEC. (in.) | Wheel Dia. (mm) | Wheel Width (mm) | Capacity Each (kg) | Wheel Material Description | Wheel Bearing Type | Swivel Radius (mm) | Overall Height (mm) | Low Profile Casters Model No. | |
|-------------|-----------------|------------------|--------------------|----------------------------|--------------------|--------------------|---------------------|-------------------------------|-------------------|
| | | | | | | | | Rigid Casters | Swivel Casters |
| 2" | 50 | 47 | 300 | Polyamide | Roller | 21 | 79 | 710PF-050047R-04 | 710PS-050047R-04 |
| | 50 | 47 | 160 | Phenolic | Roller | 21 | 79 | 710PF-050047R-06 | 710PS-050047R-06 |
| 2.5" | 65 | 47 | 400 | MC Nylon | Roller | 21 | 97 | 710PF-065047R-04 | 710PS-065047R-MC |
| | 65 | 47 | 250 | Phenolic | Roller | 21 | 97 | 710PF-065047R-06 | 710PS-065047R-06 |
| | 65 | 50 | 450 | PU on Steel | Ball | 21 | 97 | 710PF-065050DB-S3 | 710PS-065050DB-S3 |
| 3" | 75 | 47 | 500 | MC Nylon | Roller | 21 | 107 | 710PF-075047R-04 | 710PS-075047R-MC |
| | 75 | 47 | 300 | Phenolic | Roller | 21 | 107 | 710PF-075047R-06 | 710PS-075047R-06 |
| | 75 | 50 | 545 | PU on Steel | Ball | 21 | 107 | 710PF-075050DB-S3 | 710PS-075050DB-S3 |

MOUNTING PLATE AND SWIVEL CROSS SECTION

• For customization & special application options, please consult Wanda Caster.



| Top Plate (A×B) | Hole Centers (X×Y) | Plate Hole (ØP) |
|-----------------|--------------------|-----------------|
| 100×100 mm | 78×78 mm | 10.5 mm |

BRAKE OPTIONS



• **-TSB series brake**
Thumb Screw Brake



• **-DUB series brake**
Total lock, only for 3"

FINISH Inquires on other finishes welcome



▣ Zinc (Standard)



▣ Black (Standard)