

CE RED FCC REACH



PD-V8 5.8GHz 360°/180° Microwave Motion Sensor

Application

- Intelligent switch
- Wall-hung switch
- Intruder detect

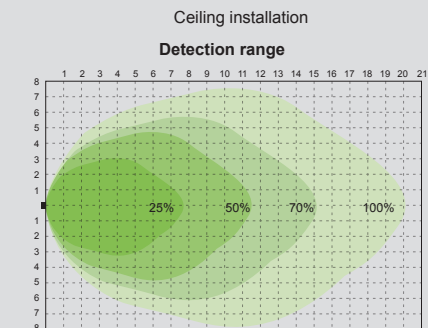
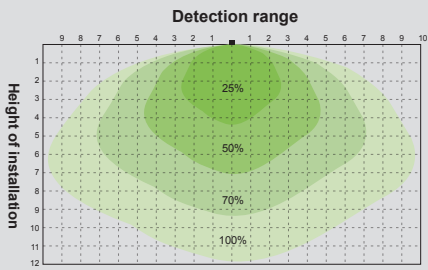
Feature and advantage

- Low wireless power output
- Low power consumption
- Non-contact detection
- Easy to connect with the controller
- Low noise output

PD-V8 5.8GHz 360°/180° microwave C-band motion sensor. The antenna part is our company invented a high-resolution planar omni-directional transceiver antenna and obtained a patent. It has much higher resolution and detection sensitivity than conventional planar antennas, and has the characteristics of high signal-to-noise ratio and low power consumption. If equipped with a low-noise amplifier circuit, the front detection distance may reach 40 meters (a sufficiently stable amplifier circuit and software algorithm are required).

Due to the many advantages of PD-V8 performance, it is widely used in security, smart home, automatic sensor lights and other fields. And suitable for the use of wall-mounted and ceiling-mounted motion detector products.

Detecting Pattern



Note: The actual detection range will depend on the gain of the signal amplifier, the overall layout of the PCBA and the algorithm of the MCU program.

According with EN 300440, EN 62479S

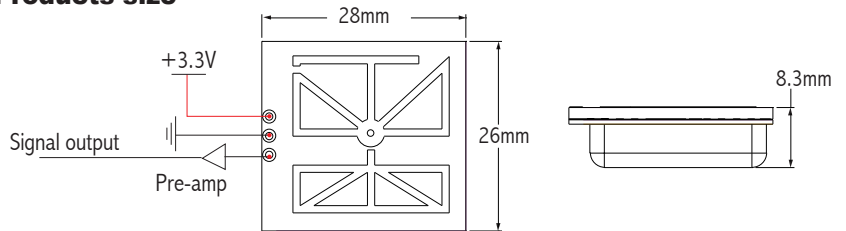
RED directive - 2014/53/EU

According with FCC Part 15.245

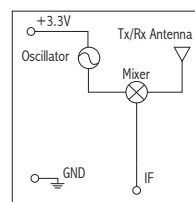
According with EN 62321, ROHS directive - 2011/65/EU

According with REACH directive - 1907/2006/EC

Products size



Block diagram and connection



Parameter	Notes	Min	Typ	Max	Units
Frequency Setting	1	5.75	5.80	5.85	GHz
Radiated Power (EIRP)	1	0.20	0.225	0.25	mW
Received Signal Strength	2	80	150	180	μVp-p
Noise	3	0.5		1.5	mVrms
Supply Voltage		2.8	3.3	3.8	V
Current Consumption		13	15	17	mA
Operating Temperature		-30	25	105	°C
Weight		6.0	6.5	7.0	g

Note1: The radiated emissions is designed to meet FCC and CE rules.

Note2: The Received Signal Strength(RSS) is measured at the total 1 Ways path loss of 70dB.

Note3: The noise voltages are measured from 10Hz to 100Hz at the Output port, inside an Anechoic chamber.

Ningbo Pdlux Electronic Technology CO.,Ltd

Add: Room 1212, Building B, Ningbo Chamber of Commerce Building, 588 Tiantong South Road, Ningbo City, Zhejiang Province
Tel: 86-574-83008608(20 lines) Email: pdlux@pdlux.com Web: www.pdlux-solution.com www.pdlux.com

