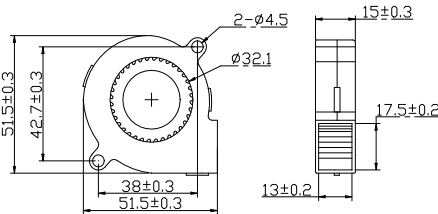
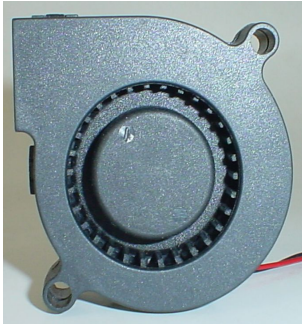




EVER GRAND

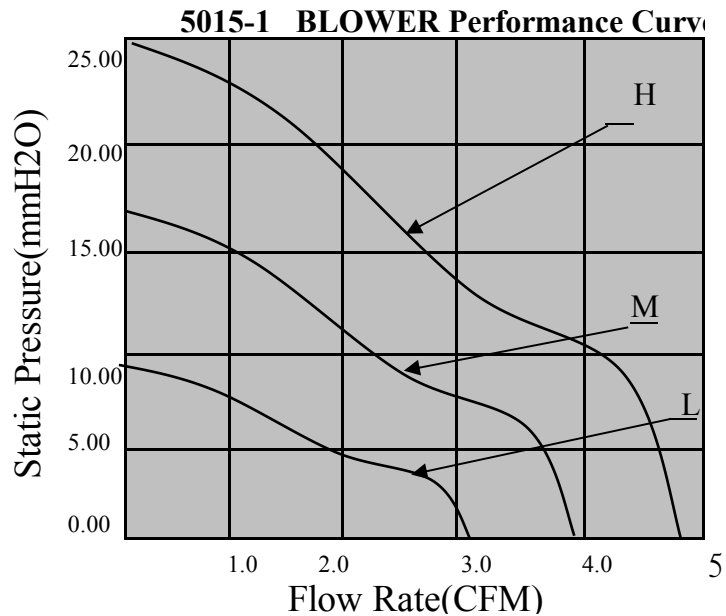
DC BLOWER EB5015-1 SERIES

DIMENSIONS DRAWING



- *Material: housing/impeller: plastic UL94-V0
- *Operating Temperature: -10°C-70°C(35%-85%RH)
- *Storage Temperature: -40°C-70°C(35%-85%RH)
- *Lead wire type: #26AWG

P&Q CURVE (AT RATED VOLTAGE)



Model	Bearing	Code	Rated Voltage	Operating Voltage	Rated Current	Rated Input Power	Speed	Air Flow	Static Pressure	Noise	Weight
PART NO.			VDC	VDC	Amp	Watt	RPM	CFM	mmH2O	dBA	g
EB5015S(B)05H-1	S.B	H	5	3.2-5.75	0.5	2.5	6000	4.8	24	42.7	26
EB5015S(B)05M-1	S.B	M		3.2-5.75	0.35	1.75	5000	3.9	16.5	39.2	
EB5015S(B)05L-1	S.B	L		3.2-5.75	0.23	1.15	4000	3.1	9.7	31.2	
EB5015S(B)12H-1	S.B	H	12	6-13.5	0.23	2.76	6000	4.8	24	42.7	
EB5015S(B)12M-1	S.B	M		6-13.5	0.14	1.68	5000	3.9	16.5	39.2	
EB5015S(B)12L-1	S.B	L		6-13.5	0.09	1.08	4000	3.1	9.7	31.2	
EB5015S(B)24H-1	S.B	H	24	12-26.4	0.14	3.36	6000	4.8	24	42.7	
EB5015S(B)24M-1	S.B	M		12-26.4	0.09	2.16	5000	3.9	16.5	39.2	
EB5015S(B)24L-1	S.B	L		12-26.4	0.06	1.44	4000	3.1	9.7	31.2	

*Function type is optional.

*The max air flow and the speed are measured in free air ;max .airpressure is measured at zero air flow.

*Noise is measured in anechoic chamber in free air ,one meter from intake side.

*All readings are typical values at rates voltage.

*Specifications are subject to change without notice.