

86BYGH SERIES HYBRID STEPPING MOTOR

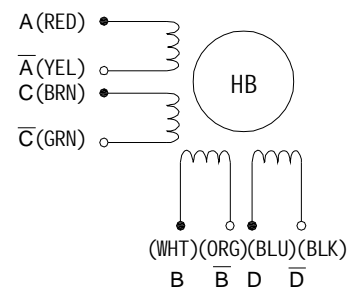
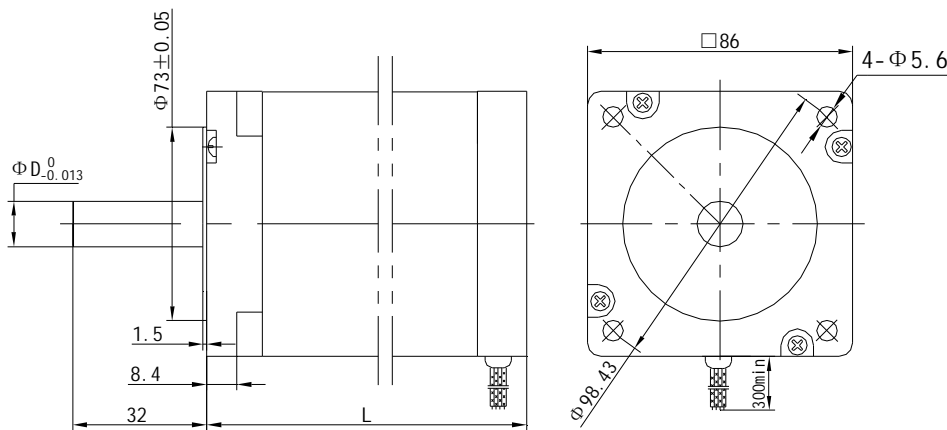
General Specifications

- Step Accuracy: 5%
- Temperature Rise: 90°C Max
- Ambient Temperature Range: -20°C~ +40°C
- Insulation Resistance: 100MΩ Min.500V DC
- Dielectric Strength: 500V AC 1minute
- Radial Play: 0.02mm Max.(450gLoad)
- End play: 0.08mm Max.(450g Load)
- Rotation: CW(See from Front Flange)



Figure

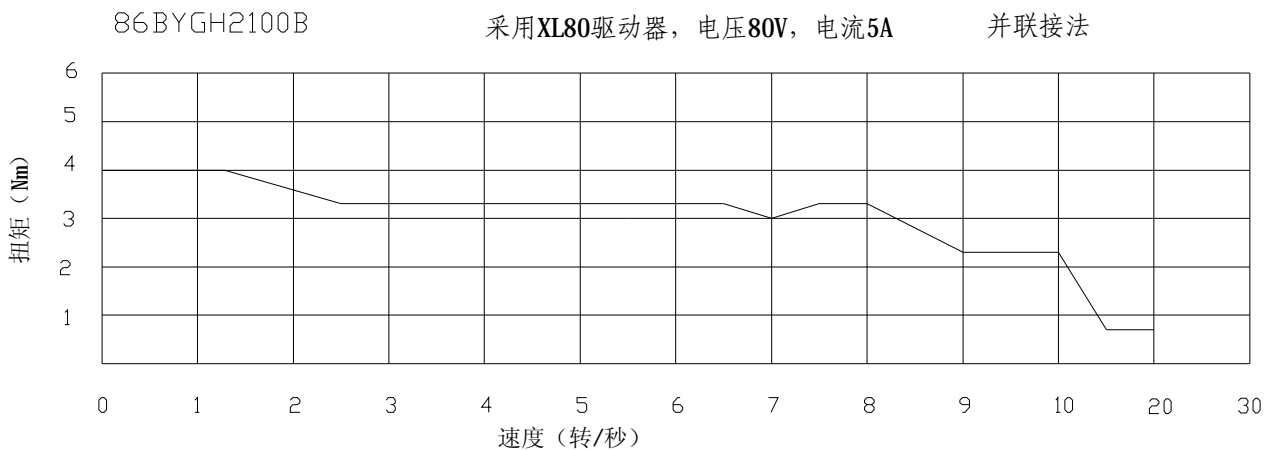
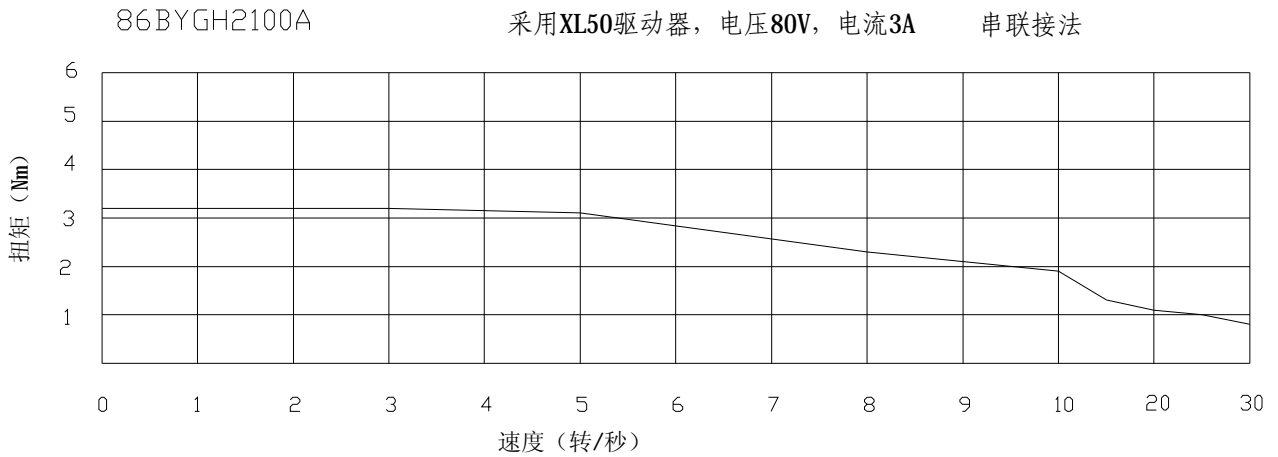
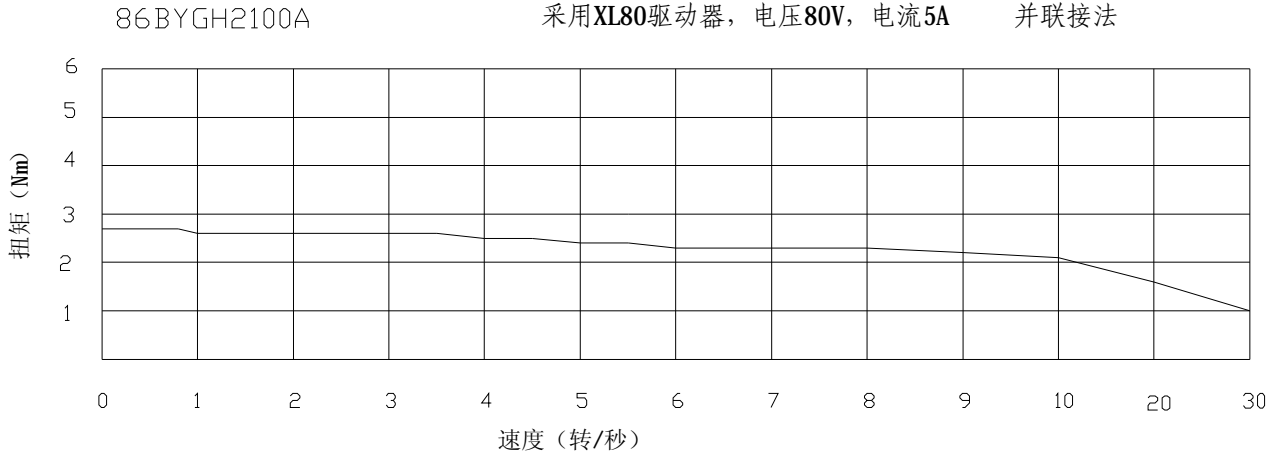
Wiring Diagram



Electrial Specifications

Model	Step Angle (deg)	Motor Length (mm)	Shaft D mm	Connec-tion	Holdin Torque (N.m)	Lead Wire Number	Rated Current (Amp)	Phase Resistance (Ohm)	Indutance (mH)	Rotor Inertia (Kg.m ² *10 ⁻³)	Detent Torque (N.m)	Motor Weight (Kg)
86BYGH2100A	0.9	79	12	series	2	8	3	1.0	7.6	0.14	0.1	2.3
				Parallel	2	8	6	0.25	1.9	0.14	0.1	2.3
86BYGH2100B	0.9	118	12	Series	4	8	3	1.6	16.8	0.27	0.2	3.9
				Parallel	4	8	6	0.4	4.2	0.27	0.2	3.9
86BYGH2100C	0.9	156	14	Series	6	8	3	2.2	22.8	0.4	0.3	5.4
				parallel	6	8	6	0.55	5.7	0.4	0.3	5.4

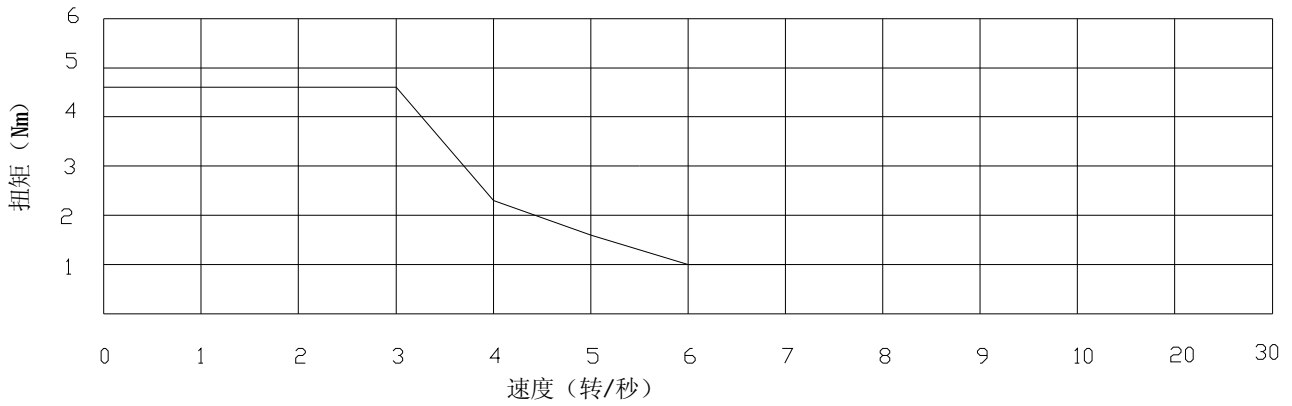
Pulse-Torque Characteristics



86BYGH2100B

采用XL50驱动器, 电压80V, 电流3A

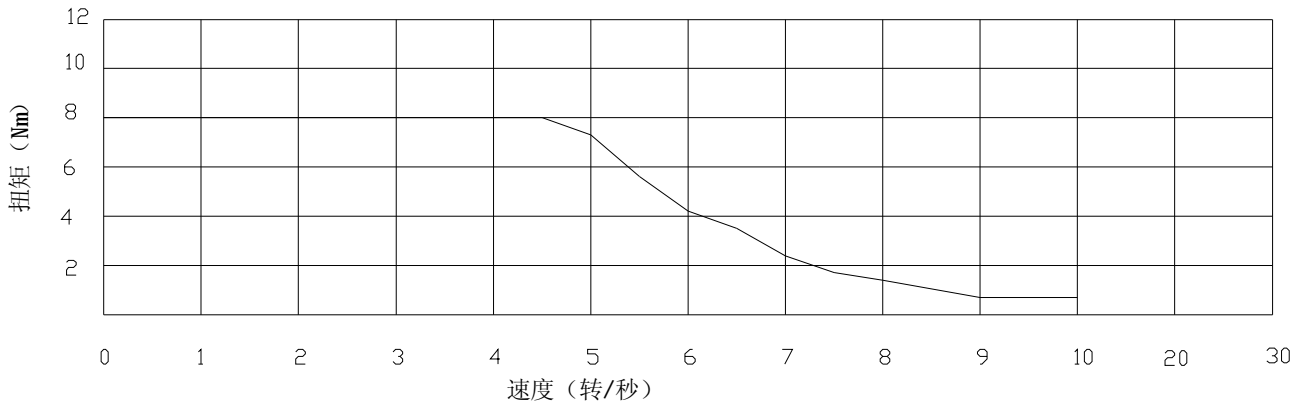
串联接法



86BYGH2100C

采用XL80驱动器, 电压80V, 电流5A

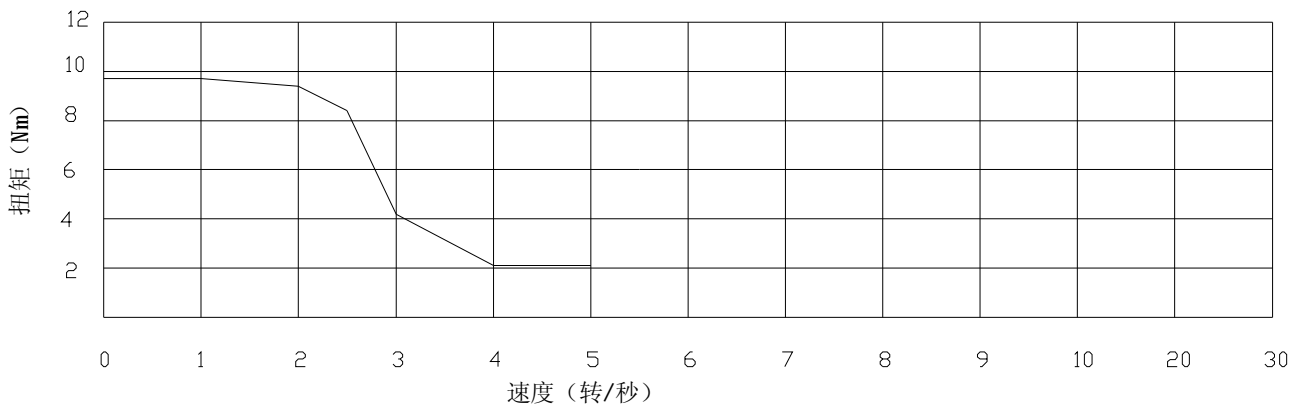
并联接法



86BYGH2100C

采用XL50驱动器, 电压80V, 电流3A

串联接法



86BYGH SERIES HYBRID STEPPING MOTOR

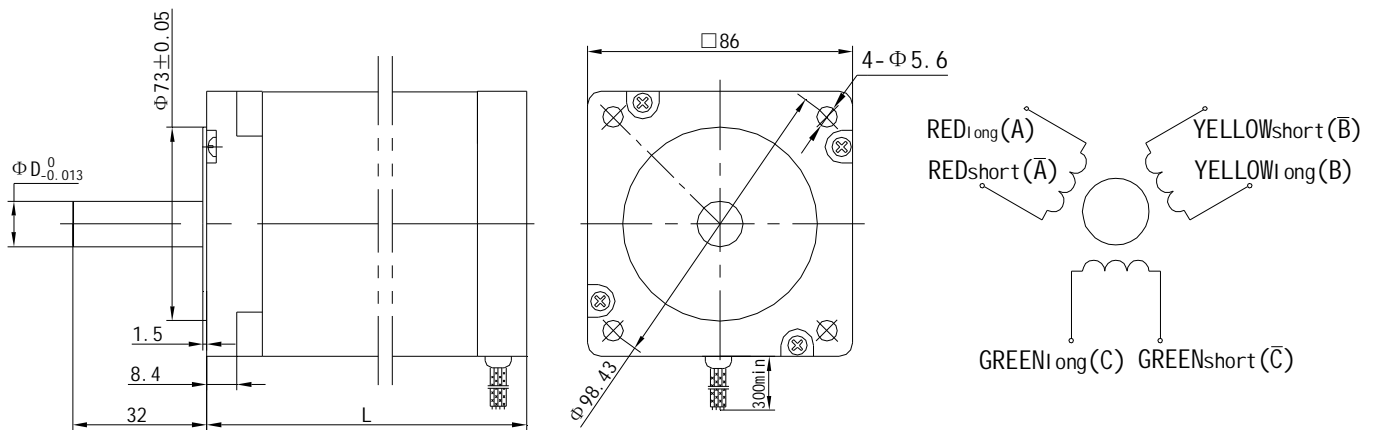
General Specifications

- Step Accuracy: 5%
- Temperature Rise: 90°C Max
- Ambient Temperature Range: -20°C~ +40°C
- Insulation Resistance: 100MΩ Min.500V DC
- Dielectric Strength: 500V AC 1minute
- Radial Play: 0.02mm Max.(450gLoad)
- End play: 0.08mm Max.(450g Load)
- Rotation: CW(See from Front Flange)



Figure

Wiring Diagram

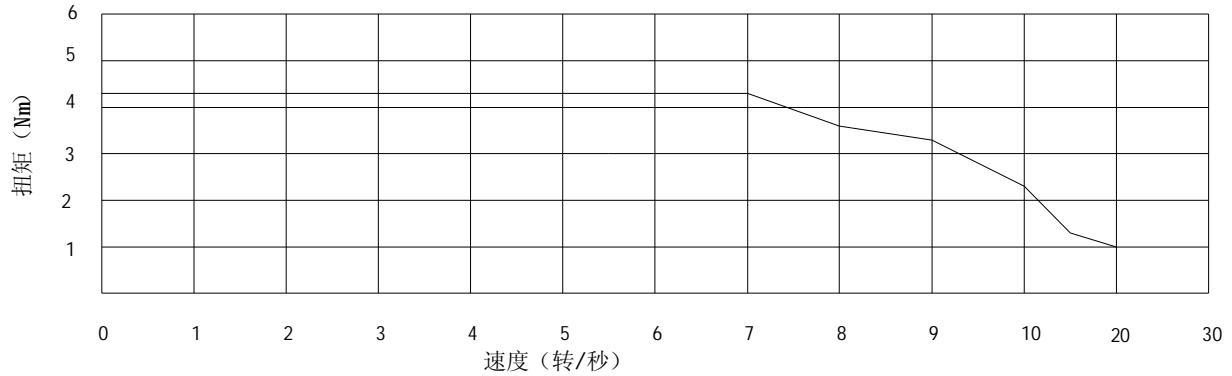


Electrial Specifications

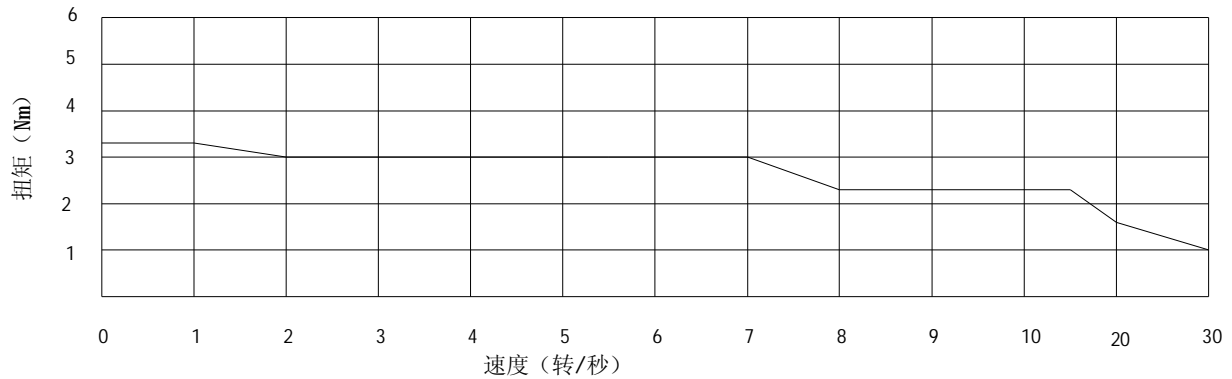
Model	Step Angle (deg)	Motor Length (mm)	Shaft D mm	Connec-tion	Holdin Torque (N.m)	Lead Wire Number	Rated Current (Amp)	Phase Resistance (Ohm)	Indutance (mH)	Rotor Inertia (Kg.m ² *10 ⁻³)	Detent Torque (N.m)	Motor Weight (Kg)
86BYGH350A	0.6/1.2	79	12	Y	2	6	2	1.0	6.6	0.14	0.1	2.3
				△	2	6	2	0.3	1.64	0.14	0.1	2.3
86BYGH350B	0.6/1.2	118	12	Y	4	6	2	1.8	13.6	0.27	0.2	3.9
				△	4	6	2	0.5	3.4	0.27	0.2	3.9
86BYGH350C	0.6/1.2	156	14	Y	6	6	2	2.1	19.2	0.4	0.3	5.4
				△	6	6	2	0.6	4.8	0.4	0.3	5.4

Pulse-Torque Characteristics

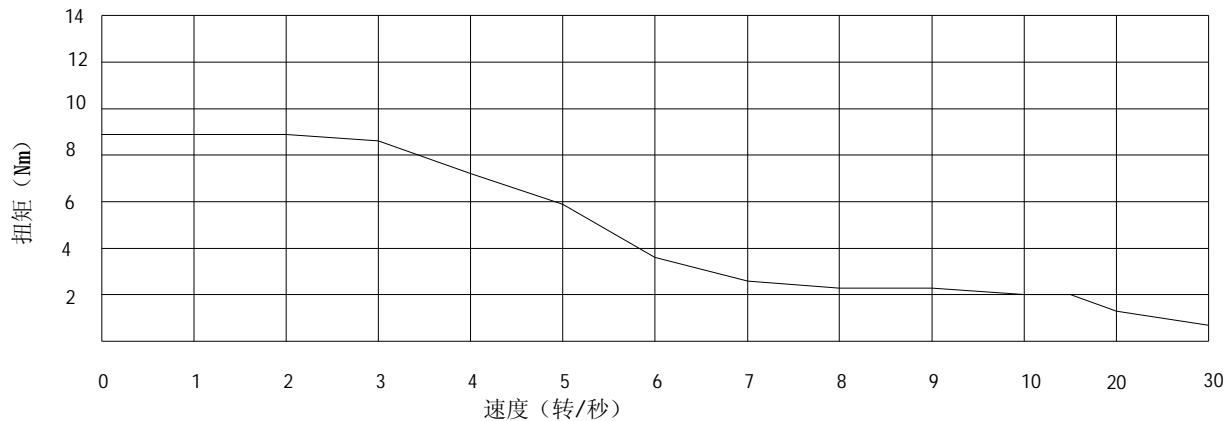
86BYGH350A 采用WD3-007驱动器, 电压325V, 电流2A 星形接法



86BYGH350A 采用WD3-007驱动器, 电压325V, 电流2A 三角形接法



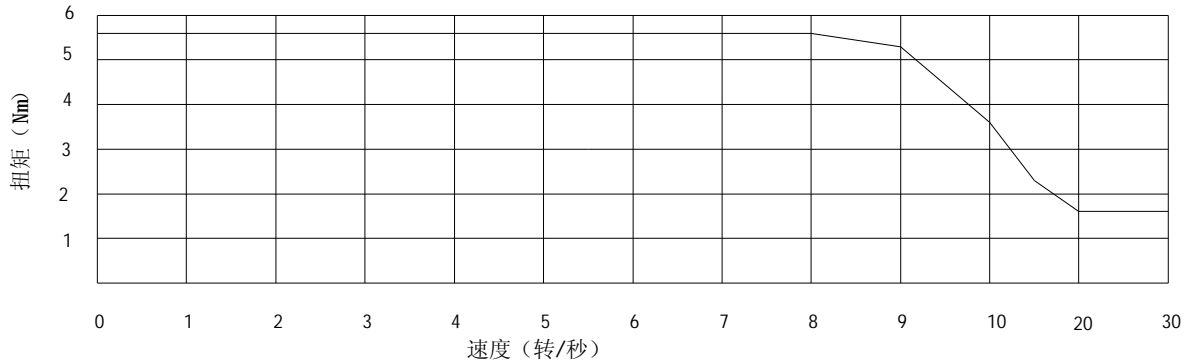
86BYGH350B 采用WD3-007驱动器, 电压325V, 电流2A 星形接法



86BYGH350B

采用WD3-007驱动器, 电压325V, 电流2A

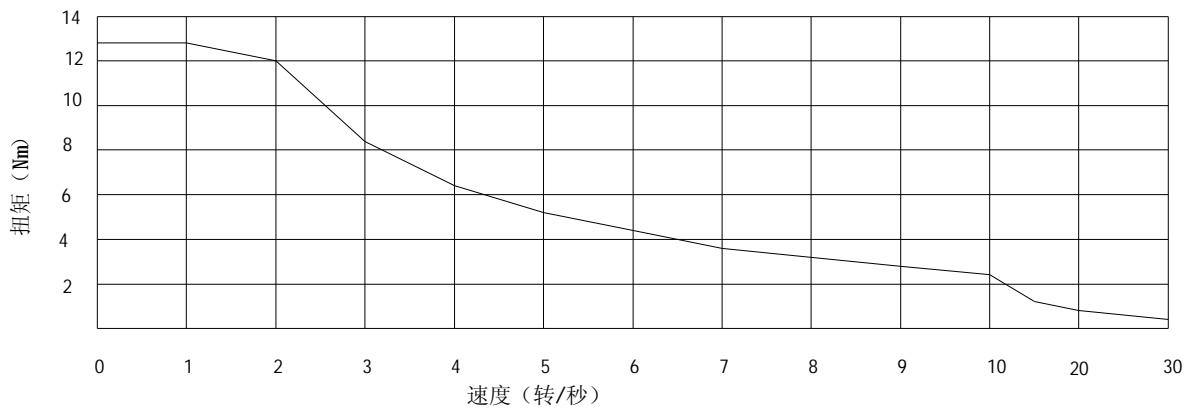
三角形接法



86BYGH350C

采用WD3-007驱动器, 电压325V, 电流2A

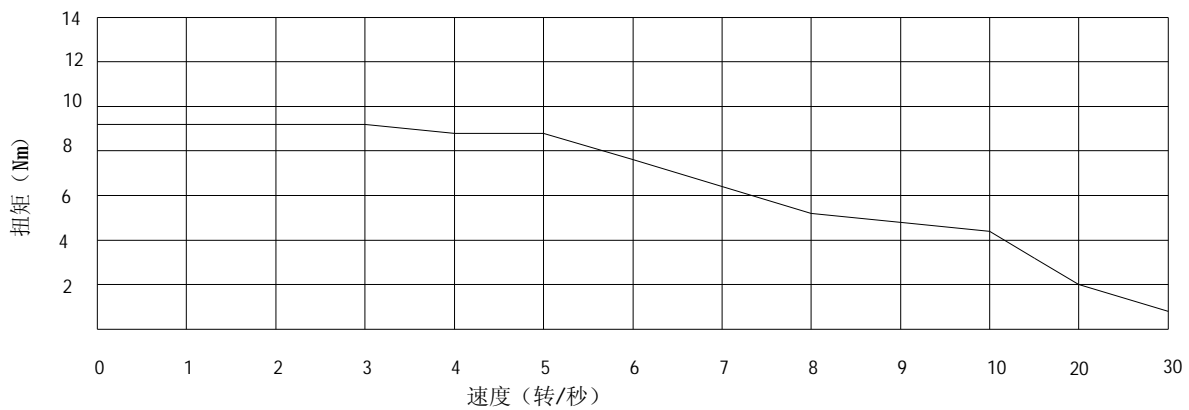
星形接法



86BYGH350C

采用WD3-007驱动器, 电压325V, 电流2A

三角形接法



86BYGH SERIES HYBRID STEPPING MOTOR

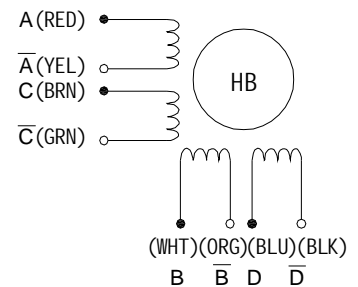
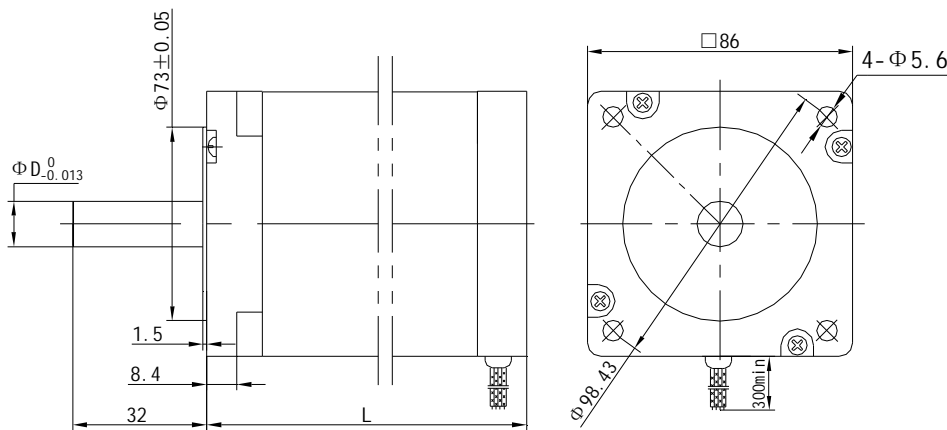
General Specifications

- Step Accuracy: 5%
- Temperature Rise: 90°C Max
- Ambient Temperature Range: -20°C~ +40°C
- Insulation Resistance: 100MΩ Min.500V DC
- Dielectric Strength: 500V AC 1minute
- Radial Play: 0.02mm Max.(450gLoad)
- End play: 0.08mm Max.(450g Load)
- Rotation: CW(See from Front Flange)



Figure

Wiring Diagram

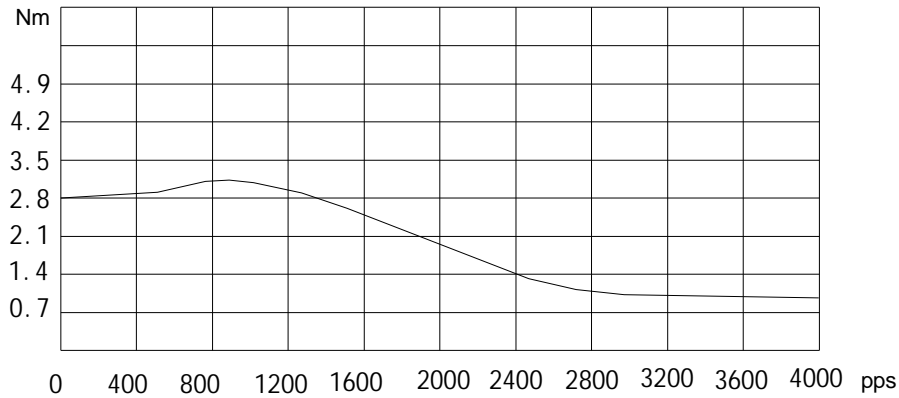


Electrial Specifications

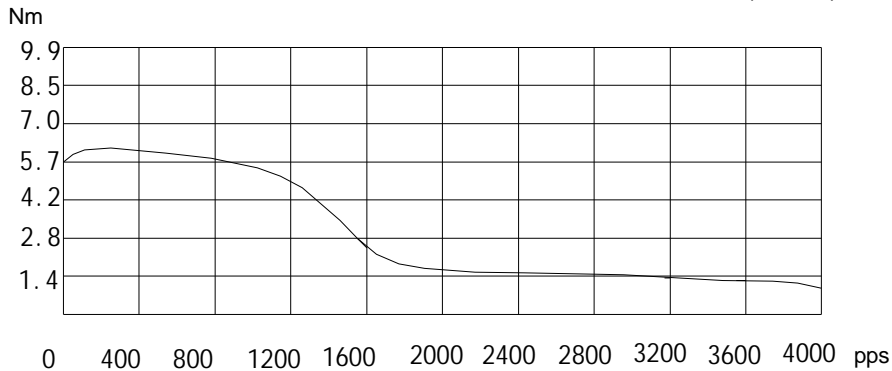
Model	Step Angle (deg)	Motor Length (mm)	Shaft D mm	Connect ion	Holdin Torque (N.m)	Lead Wire Number	Rated Current (Amp)	Phase Resistance (Ohm)	Indutance (mH)	Rotor Inertia (Kg.m ² *10 ⁻³)	Detent Torque (N.m)	Motor Weight (Kg)
86BYGH450A	1.8	79	12.7	series	3.2	8	5	1.0	6.6	0.14	0.1	2.3
				Parallel	3.2	8	9.5	0.3	1.64	0.14	0.1	2.3
86BYGH450B	1.8	118	12.7	Series	6.4	8	5	1.8	13.6	0.27	0.2	3.9
				Parallel	6.4	8	9.5	0.5	3.4	0.27	0.2	3.9
86BYGH450C	1.8	156	15.875	Series	9.6	8	5	2.1	19.2	0.4	0.3	5.4
				parallel	9.6	8	9.2	0.6	4.8	0.4	0.3	5.4

Pulse-Torque Characteristics

MODEL:86BYGH450A TORQUE VS SPEED CURVE
DRIVE:DUAL CHOPPER SUPPLY VOLTAGE 75V,5A,0.9° (XL150)



MODEL:86BYGH450A TORQUE VS SPEED CURVE
DRIVE:DUAL CHOPPER SUPPLY VOLTAGE 75V,5A,0.9° (XL150)



MODEL:86BYGH450A TORQUE VS SPEED CURVE
DRIVE:DUAL CHOPPER SUPPLY VOLTAGE 75V,5A,0.9° (XL150)

