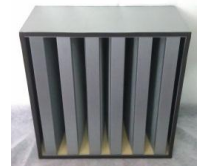




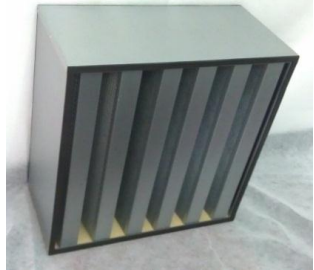
GE TECHNOLOGY INC

Clean Air & Water Solutions!



Foam-Based Activated Carbon Filter (6V Type)

CHEMSORB CHEMICAL FILTERS

Brand	Model No.	Challenge Gases	Size (mm) (LxWxD)	Type	Gross Weight (KG)	Pressure drop (Pa @2.5 m/s)	Initial Efficiency (@2.5 m/sec)	Activated Carbon Spec	Remark
CHEMSORB	FAG-242412-6V	Acidic Gases: Chlorines Hydrogen Chloride Hydrogen Bromide Hydrogen Flouride Chlorine Dioxide Hydrogen Sulfide Sulfuric DMS Sulfides Boron	605x605x290	ChemSorb® Activated Carbon Foam	19.5	170 pa	> 90 % or Inlet 10 ppb Outlet < 1.0 ppb (H2S)	Type: Impregnated Carbon Adsorption Method: Chemisorption	 Frame : Galvanized Steel (6V) Air Flow : 3400 CMH/2000 CFM Air Velocity : 2.5 m/sec Contamination: 10ppb Service Life (Final Efficiency: 70%) H2S : > 10 months NH3 : > 10 months VOC : Depends on actual VOC compositions Carbon Spec: Type: Granular Material: Coconut Base CTC: 85% min. Surface Area: 1350m ² /g min
CHEMSORB	FBG-242412-6V	Basic/Alkali Gases: Ammonia Morpholine NMP Triethylamine Trimethylamine	605x605x290	ChemSorb® Activated Carbon Foam	19.5	170 pa	> 90 % or Inlet 10 ppb Outlet < 1.0 ppb (NH3)	Type: Impregnated Carbon Adsorption Method: Chemisorption	Carbon Spec: Type: Granular Material: Coconut Base CTC: 85% min. Surface Area: 1350m ² /g min
CHEMSORB	FCG-242412-6V	VOC PGME, PGMEA MEK, FC-43 FC-3277, CS2 HFE 7200 Toluene, Acetone Xylene, IPA, Silicons Ozone, Boron Hydrogen Carbon Organic Sulfur	605x605x290	ChemSorb® Activated Carbon Foam	19.5	170 pa	> 90 % or Inlet 10 ppb Outlet < 1.0 ppb (Toluene)	Type: Virgin Activated Carbon Impregnation: No Adsorption Mehtod: Physical Adsorption	