

ASP2002CU Pressure Sensor

ASP2003CU Absolute Pressure Sensor



Introduction

- Excellent EMC performance
- Comply with RoHs and CE standards
- Tested by salt mist, temperature and humidity
- Full-sealing waterproof characteristic
- Ingress protection: IP65/IP67
- Ultra-low power with standby power less than 2uA
- UART digital communication for configuration and production calibration

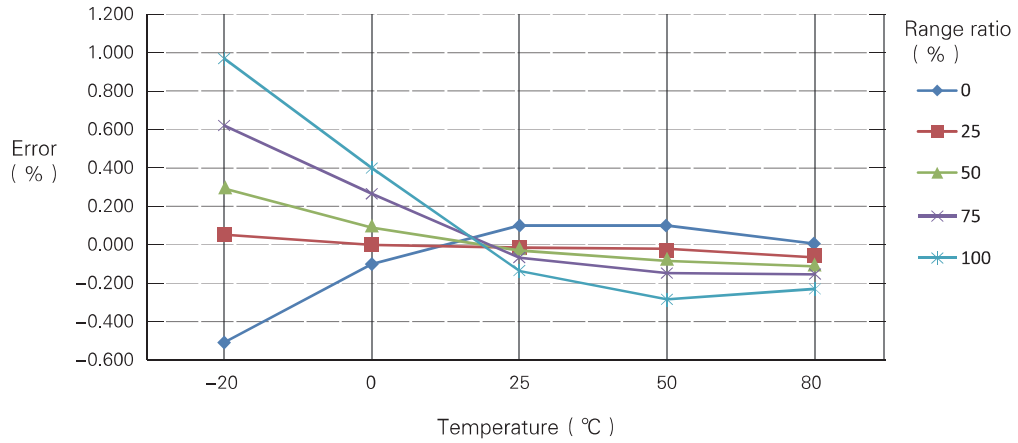
Application

- Battery power supply water meters with pressure measurement
- Constant water supply and pipe water pressure measurement
- Boilers and tanks pressure and liquid level measurement

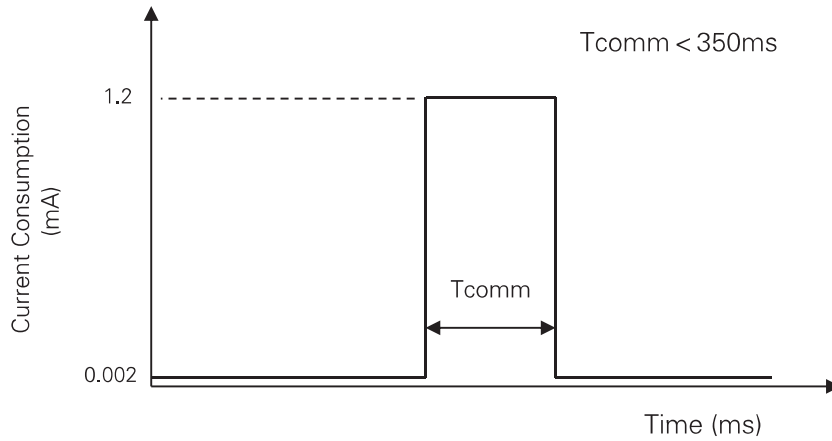
Technical Parameter

Specifications	Technical Data
Input data	
Measuring ranges	0 ~ 100KPa...70MPa
Overload pressures	150%F.S
Burst pressures	300%F.S
Operating voltage	2.8V~3.6VDC
Output data	
Communication	UART (9600bps; 8N1; Customize)
Accuracy	0.25 %
Response time	≤300ms
Long-term drift	≤ ± 0.1 % F.S typ. / year
Environmental condition	
Current consumption	Stand-by: < 2uA@3.3VDC Communication: < 1.2mA@3.3VDC
Operating temperature range	-20 ~ +80°C
Storage temperature range	-30 ~ +85°C
EMC performance	EN 61000 – 6 – 2 / 3 / 4 / 6
Vibration	10g, 20Hz~2kHz (IEC 60068-2-6)
Shock	50g, 11ms (IEC 60068-2-27)
Free fall	1m (IEC 60068-2-32)
Insulation resistance	>100 MΩ(100 VDC)
Dielectric strength	AC1000V / 2mA (1min)

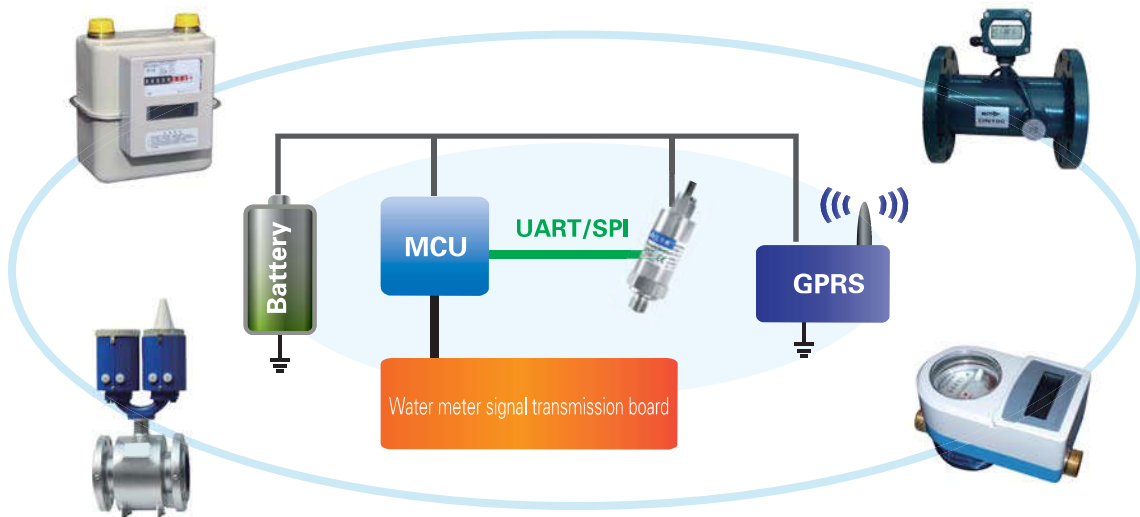
Temperature Performance



Power dissipation curve



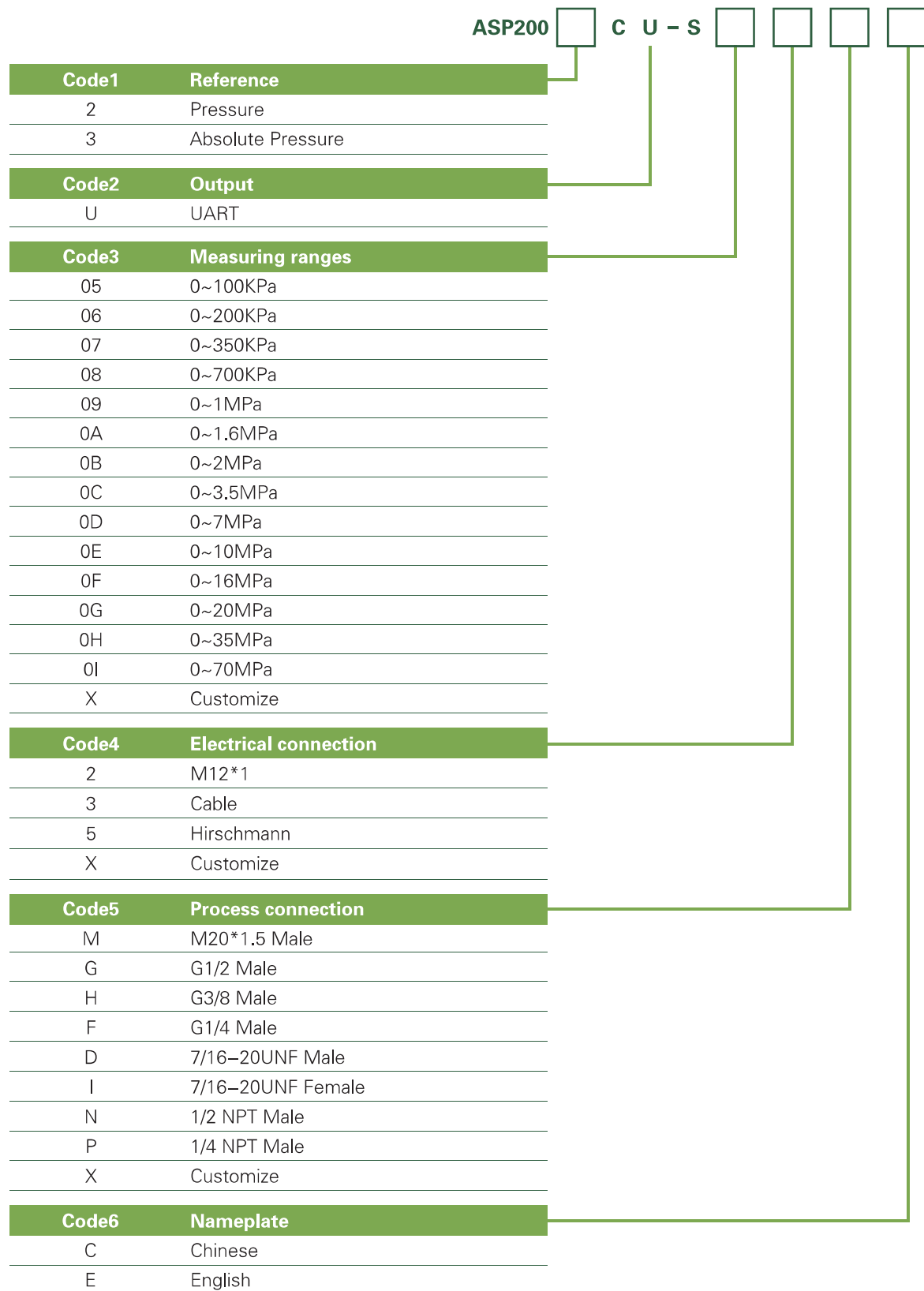
Used For The Battery Water Meter



Appendix table A for Dimension

Appendix table B for Electrical port

Type Code



* Note: Order example: Pressure Sensor ASP2002CU-S052MC