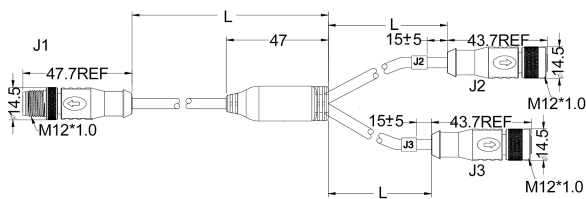


M12 8pins A code male connector to 2xM12 8pins A code female connector cable/M12,8针,A型公头连接器对2+M12,8孔A型母头连接器,连接线

Scale drawing/尺寸图

Product photo/产品图



Part number/产品料号

Pins/针数	Code/型	Part number("X" is length millimetre mm)/产品料号("X"表示长度, 单位毫米mm)
8pins/8针	A code/A型	12L02145-X

Pin assignment front view/针位分布前视图

A code 8pins
8pins/8针



Connection diagram/连接图

J1	J2	J3	
1	1	1	Red 红色
2	2	2	Brown 棕色
3	3	3	Green 绿色
4	4	4	Black 黑色
5	5	5	Yellow 黄色
6	6	6	Orange 橙色

General data/常规数据

Pin numbers/针数	8pins/8针
Rated voltage/额定电压	30V
Rated current(40°C)/额定电流	2A
Standards/标准	IEC 61076-2-101
Termination/焊接方式	Solder and over-mold/焊接和成型
Connector locking system/锁紧方式	Screw-locking/螺丝锁紧
Degree of protection/防护等级	IP67
Wire gauge(mm²)/线规(平方数)	0.14mm²-0.34mm²
Wire gauge(AWG)/线号(平方数)	26AWG-22AWG
Mechanical operation/插拔次数	>100 mating cycles/大于100次
Ambient temperature (operation)/操作温度	-40°C~+150°C
Contact resistance/接触电阻	≤5mΩ
Insulation resistance/绝缘电阻	>100MΩ
Connector body/胶芯	TPU
Pin/端子	Brass and Phosphorus copper with gold plated/黄铜和磷铜镀金
Nut and shell/螺母和铜壳	Brass with nickel plated/黄铜镀镍
Gasket/胶圈	Fluorine ring/氟胶圈
Black glue/黑色胶水	Epoxy resin/环氧树脂
Customs tariff number/海关编码	8538900000
Environmental compliance/环境符合标准	RoHs, Reach