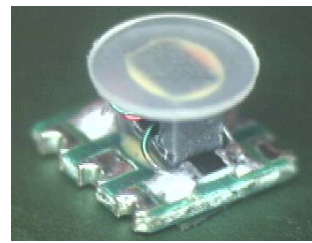


Power Splitter/Combiner

EDD0026-F062441

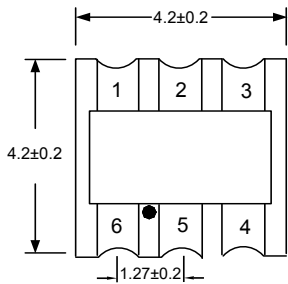
2022-01-21 Rev. 0



75Ω 2 Way-0° Power Divider

5-2400MHz

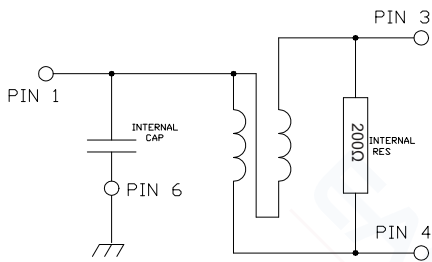
Outline Drawing(mm)



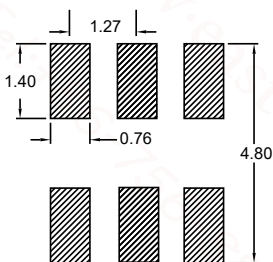
Top View



Electrical structure



Recommended layout(mm)



Pin Connections

SUM PORT	1
PORT 1	3
PORT 2	4
Not Connected	2,5
Ground	6

Features

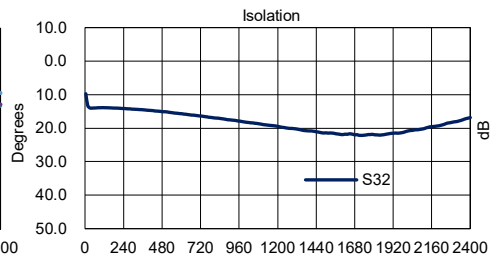
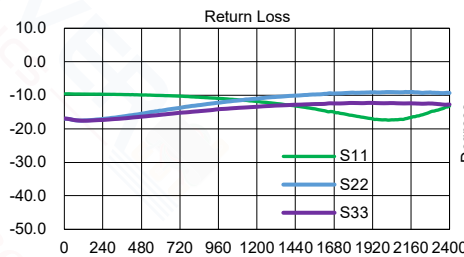
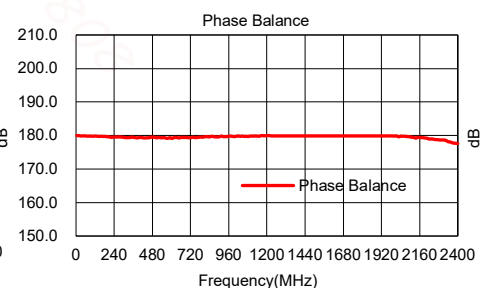
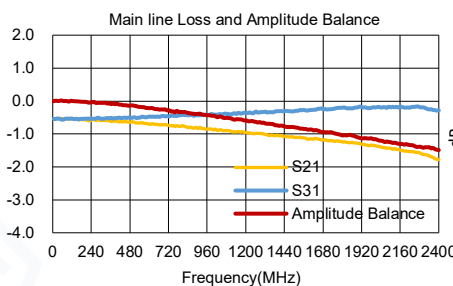
- Operating temperature range: -40°C to +85°C
- Storage temperature range: -55°C to +100°C
- 260°C Reflow Compatible
- RoHS compliant and lead free
- Input Power: 1W
- DC Current: 0.5A

Applications

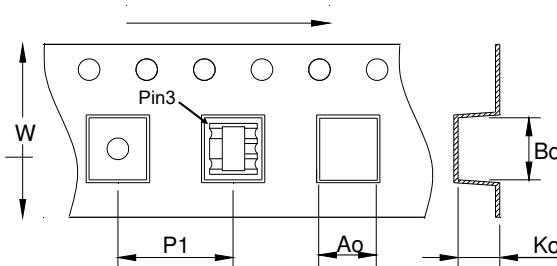
- For catv
- For broadband and wireless communications

Electrical Specifications:TA=25°C, 0dBm, Z0=75Ω

Parameter	Test Conditions	Units	Min	Typ	Max
Main line Loss (S21)	5-2400MHz	dB	—	1.5	3.0
Main line Loss (S31)	5-2400MHz	dB	—	0.5	1.5
Input Return Loss S11	5-2400MHz	dB	8.0	12.0	—
Output Return Loss S22	5-2400MHz	dB	8.0	10.0	—
Output Return Loss S33	5-2400MHz	dB	8.0	12.0	—
Isolation	5-2400MHz	dB	12.0	18.0	—
Amplitude Balance	5-2400MHz	dB	—	1.8	1.3
Phase Balance	5-2400MHz	dB	—	5.0	12.0



Carrier Tape Orientation



Tape & Reel Information

Parameter	Units	Value
Qty per reel	PCS	2000
Reel Size	mm	330
Tape Width	mm	16.00
Pitch	mm	8.00
Ao	mm	4.80
Bo	mm	4.80
Ko	mm	3.50