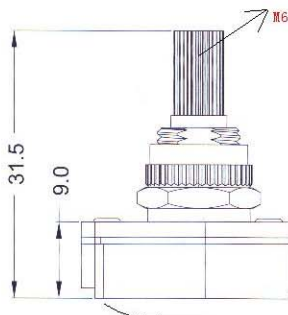
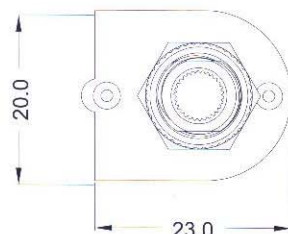
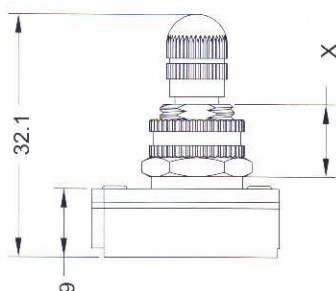
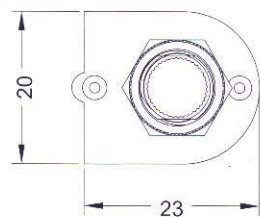
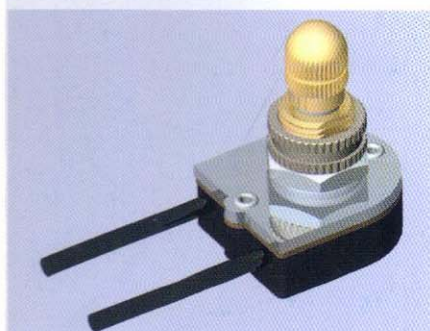
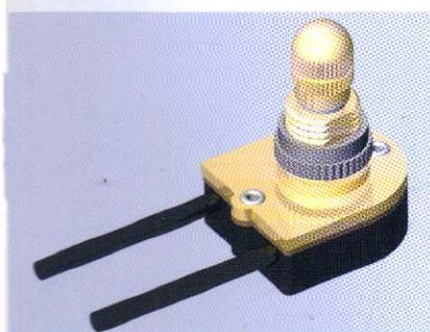
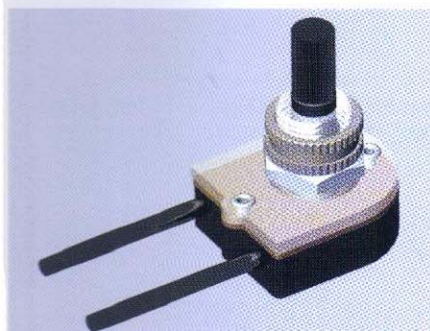
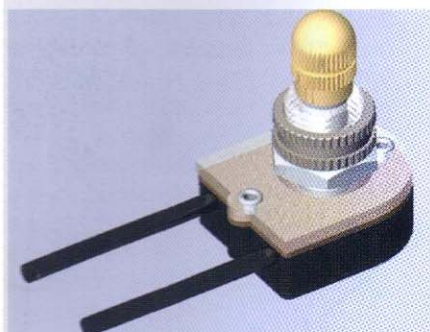
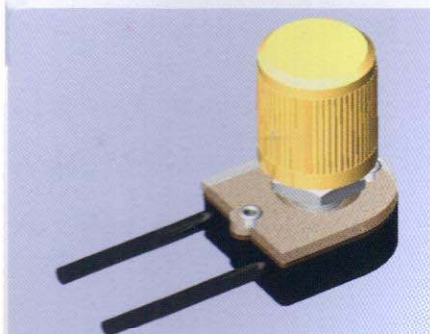




# Single-Circuit Rotary Canopy Switches

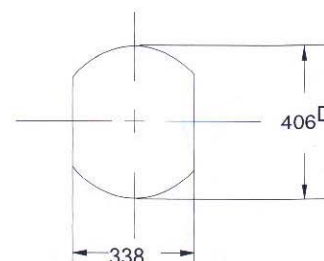
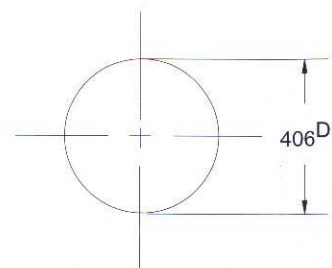
309M



**UL File NO.E218558**

**Cat. No. LS-309M series  
Single-Circuit Canopy Switch  
Sequence-Load 1 on, Load 1 off**

Compact switch with black molded plastic, clear body, plastic or milled metal nipples. Supplied with removable turn knob in brass or nickel-plated. Finishing nuts are packed separately in each carton. All nipples are 1/8 - 27 NPS. Standard leads are black AWM 1015 105°C with tinned inners, stripped 5/8". For other types of leads, lead lengths, lead colors, or special finishing requirements, consult factory.



**Piercing dimensions all male nipples, 1/8-27NPS**

Cat No.	Inventory No.	Nipple Length(x)	Ratings	Certification
309M	309M-1	3/8"plastic	3A-125VAC 6A-125VAC 6A-125VL	
	309M-2	5/8"plastic		
	309M-3	3/4"plastic		
	309M-4	1"plastic		
	309M-5	1-1/8"plastic		
	309M-6	3/8"zinc		
	309M-7	5/8"zinc		
	309M-8	1-1/8"zinc		
	309M-9	3/8"brass		
	309M-10	5/8"brass		
	309M-11	1-1/8"brass		

**WIN-KARE TECHNOLOGY CO., LTD**

Tel: +86-755-25003073; Fax: +86-755-25003079

Mail: marketing@win-kare.com; Web: Http://www.win-kare.com