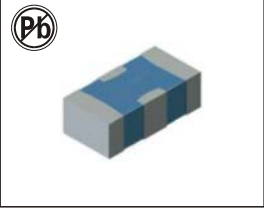


LOW TEMPERATURE CO-FIRED CERAMIC CHIP COMPONENT

Part No.: LTCC-LF3216-400M00



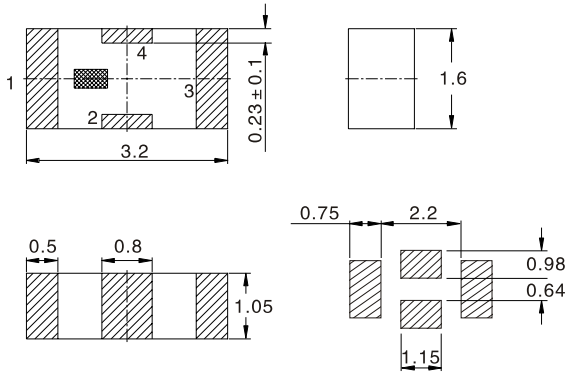
Characteristics:

- Small volume 3.2X1.6X1.05mm
- Small temperature drift
- High power capacity

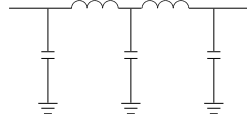
Application:

- Receiver/Transmitter
- Harmonic suppression

Dimension



Winding



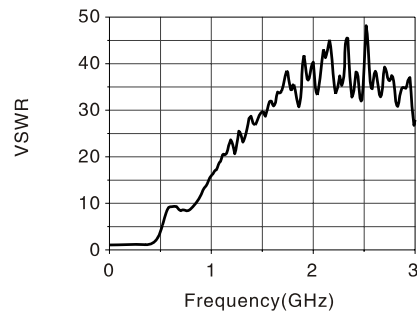
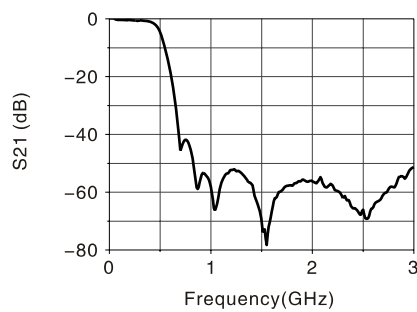
Terminal	Function
1	Signal Input
3	Signal Output
2,4	Signal grounding

Technical parameter

Parameter	Frequency(MHz)	Min	Typ	Max	Unit
3dB Cut-off frequency			440		MHz
Insertion loss	DC-400		0.8	1.0	dB
VSWR			1.3	1.5	dB
Out of band inhibition	680-3000		38		dB
Power capacity				7	W

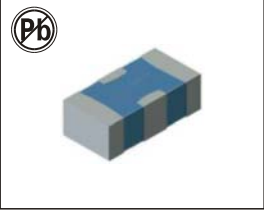
Operating temperature: -55°C to +105°C
Storage temperature: -55°C to +125°C

Index curve



LOW TEMPERATURE CO-FIRED CERAMIC CHIP COMPONENT

Part No.: LTCC-LF3216-800M00



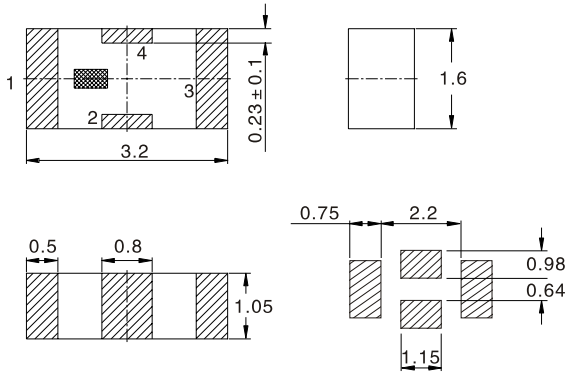
Characteristics:

- Small volume 3.2X1.6X1.05mm
- Small temperature drift
- High power capacity

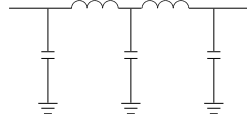
Application:

- Receiver/Transmitter
- Harmonic suppression

Dimension



Winding



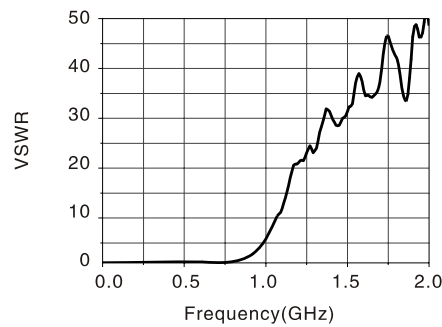
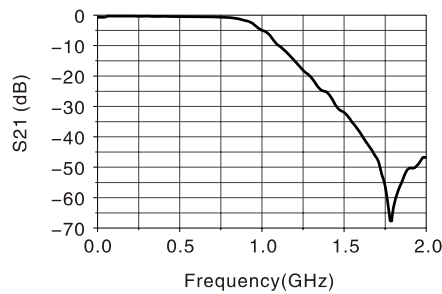
Terminal	Function
1	Signal Input
3	Signal Output
2,4	Signal grounding

Technical parameter

Parameter	Frequency(MHz)	Min	Typ	Max	Unit
3dB Cut-off frequency			930		MHz
Insertion loss	DC-800		1.0	1.2	dB
VSWR			1.3	1.5	dB
Out of band inhibition	1500-2000		30		dB
Power capacity				7	W

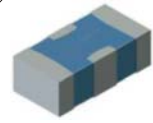
Operating temperature: -55°C to +105°C
Storage temperature: -55°C to +125°C

Index curve



LOW TEMPERATURE CO-FIRED CERAMIC CHIP COMPONENT

Part No.: **LTCC-LF3216-3000M0**



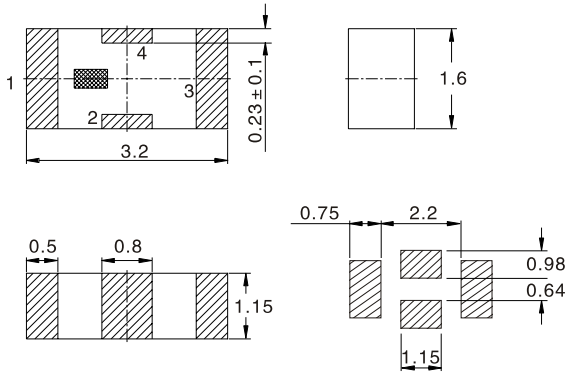
Characteristics:

- Small volume 3.2X1.6X1.15mm
- Small temperature drift
- High power capacity

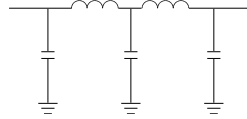
Application:

- Receiver/Transmitter
- Harmonic suppression

Dimension



Winding



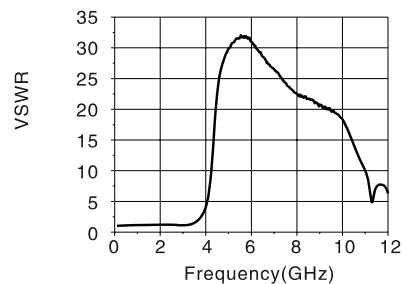
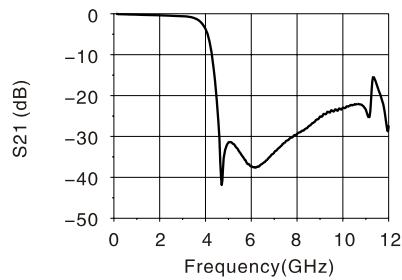
Terminal	Function
1	Signal Input
3	Signal Output
2,4	Signal grounding

Technical parameter

Parameter	Frequency(MHz)	Min	Typ	Max	Unit
3dB Cut-off frequency		3500			MHz
Insertion loss	DC-3000		1.0	1.2	dB
VSWR			1.5	1.6	--
Out of band inhibition	4550	20			dB
	4780-7500	28			dB
	10000	20			dB
Power capacity				7	W

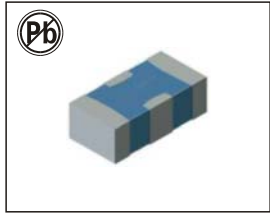
Operating temperature: -55°C to +105°C
Storage temperature: -55°C to +125°C

Index curve



LOW TEMPERATURE CO-FIRED CERAMIC CHIP COMPONENT

Part No.: LTCC-LF3216-3400M0



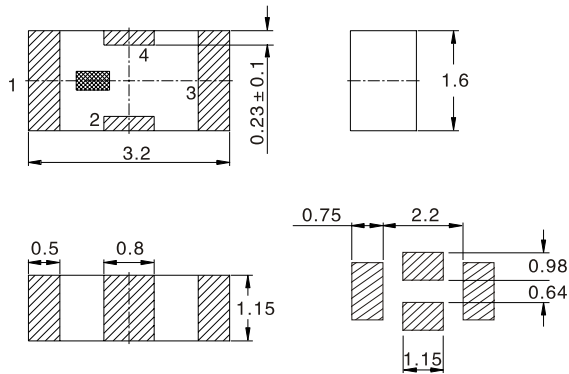
Characteristics:

- Small volume 3.2X1.6X1.15mm
- Small temperature drift
- High power capacity

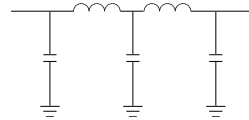
Application:

- Receiver/Transmitter
- Harmonic suppression

Dimension



Winding



Terminal	Function
1	Signal Input
3	Signal Output
2,4	Signal grounding

Technical parameter

Parameter	Frequency(MHz)	Min	Typ	Max	Unit
3dB Cut-off frequency		3750			MHz
Insertion loss	DC-3400		1.2	1.5	dB
VSWR			1.4	1.6	--
Out of band inhibition	4300	20			dB
	4600-7800	23			dB
	8300	20			dB
Power capacity				7	W

Operating temperature: -55°C to +105°C
 Storage temperature: -55°C to +125°C

Index curve

