

Solar street light



Brightmoon Pro SOLAR STREET LIGHT

Prepared	Checked	Approved	Accepted	Confirmed	Approved

MPPT Controller	LifePO4 Battery	CE	RoHS	5050 SMD	IK08	IP67	5 Years
--------------------	--------------------	----	------	-------------	------	------	------------

Model: ☉ LCM-XXXXX-Pro

Brightmoon Pro series uses high-efficiency monocrystalline silicon solar panels, The energy storage and MPPT controller are integrated into a modular design, and the overall design very simple. The bracket that carries the product is made of galvanized steel plate with surface powder spraying treatment. The battery box uses aluminum profile extrusion technology and surface sandblasting treatment. The overall product can be selected in classic black, white and gray colors, giving the product a classic and timeless temperament.

Brightmoon Pro focuses on 100-260W high-power solar lighting power supply systems, combined with professional light distribution lenses, to provide excellent solutions for high-power road lighting, and can also provide power for environmental monitoring and other equipment;

Suitable for squares, secondary roads, large parking lots, etc.

Picture:



Features:

- ☉ High-efficiency solar charging, no wiring;
- ☉ MPPT controller to maximize the power generated by solar panels;
- ☉ The brightness of the whole lamp is as high as 210lm/w;
- ☉ CREE SMD 5050/7070 LED with low attenuation and long life;
- ☉ Professional road light distribution design;
- ☉ Intelligent lighting mode can adjust the brightness of the lamp according to the power;
- ☉ Lamp and battery body extrusion aluminum material;
- ☉ IP67 Waterproof for the outdoor use;
- ☉ Easy installation, no cable and easy maintenance;
- ☉ CE, RoHS compliant.

Applications:

- ☉ Street, pathway, sideroad, secondary road, squares etc.

Warranty:

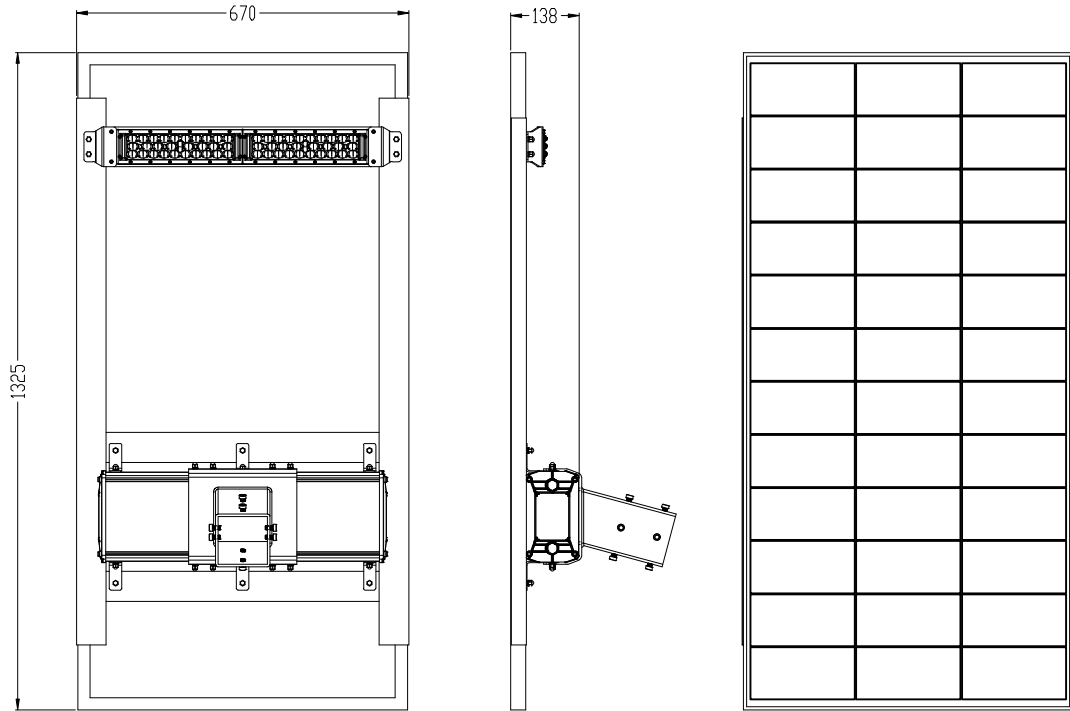
- ☉ 5 years

Product Parameters:

Model	Solar panel	LED Beads	Lamp Power	Battery Capacity	Color Temperature	Control Method	Rainy weather Lighting time	Lamp Body Material
LCM-10040-Pro	20.5V/100W	CREE 5050	LED 40Watts	12.8V/576Wh	5000K~6500K	MPPT Controller	5days	Aluminum alloy shell
LCM-18060-pro	20.5V/180W	CREE 5050	LED 60Watts	12.8V/960Wh				
LCM-26080-Pro	20.5V/260W	CREE 5050	LED 80Watts	12.8V/1152Wh				

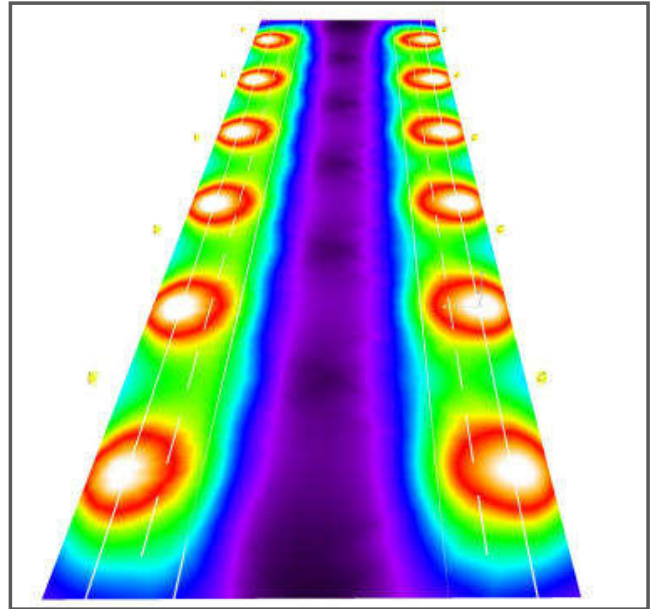
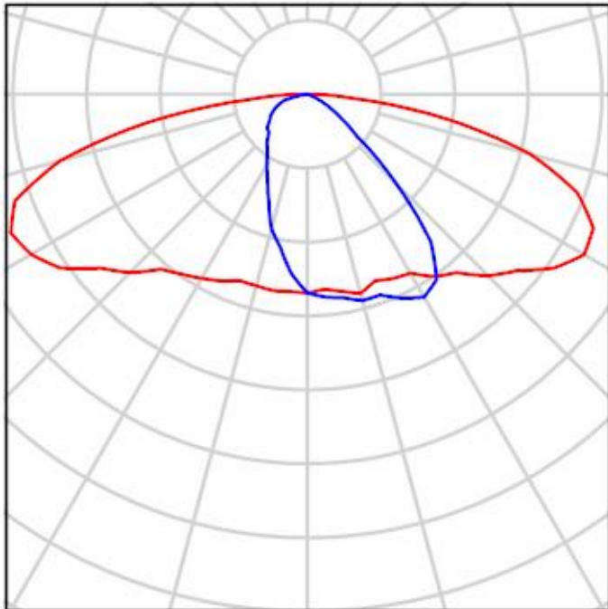
Working environment and packaging

Model	Fixture Size LxBxH (mm)	Net weight	Carton Package	Gross weight	Working Temperature	IP Grade	Light Distribution	Installation Height
LCM-10040-Pro	1036*535*138mm	16.6Kg	1086*585*188mm	18.6Kg	-35°C to 60°C	IP 67	Bat wing	5-6M
LCM-18060-pro	1325*670*138mm	24.4Kg	1375*720*188mm	26.8kg				8-10M
LCM-26080-Pro	1720*770*138mm	32.8Kg	1770*820*188mm	35.5Kg				10-12M



Light distribution curve

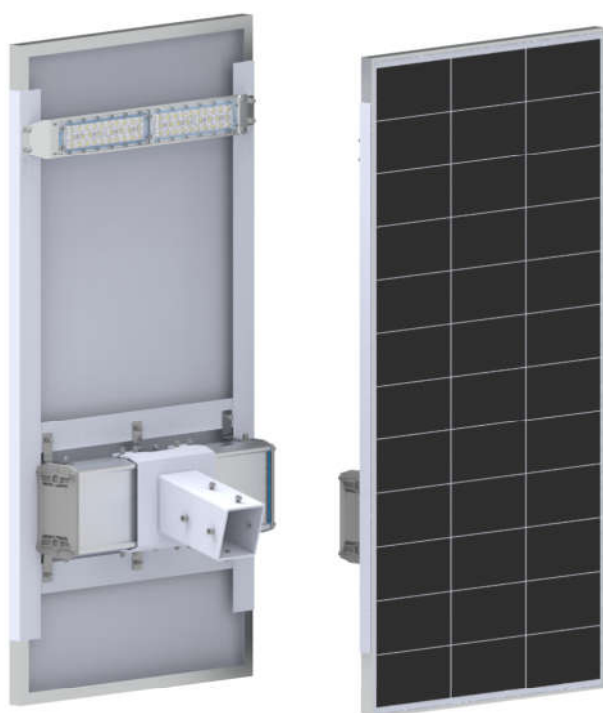
Professional light distribution lenses to reduce light decay and pollution, making road lighting more scientific



Rain-proof, lighting-proof,
sun-proof, anti-corrosion
The surface is frosted to
make it more textured

**PATENTED PRODUCT
PLEASE DO NOT IMITATE**

CLASSIC BLACK AND WHITE COLOR



HIGH-BRIGHTNESS QUALITY CHIP

low power consumption LED chip,High efficiency and long life,lasting stable light
Professional road light distribution design



RA≥85

LED CHIPS 5050/7070

LARGE LUMINOUS FULX

LOW LIGHT DECAY

HIGH QUALITY CHIP

CONSTANT CURRENT CONTROL,
LASTING BRIGHTNESS

GOOD LIGHTS BECAUSE OF GOOD BOARDS

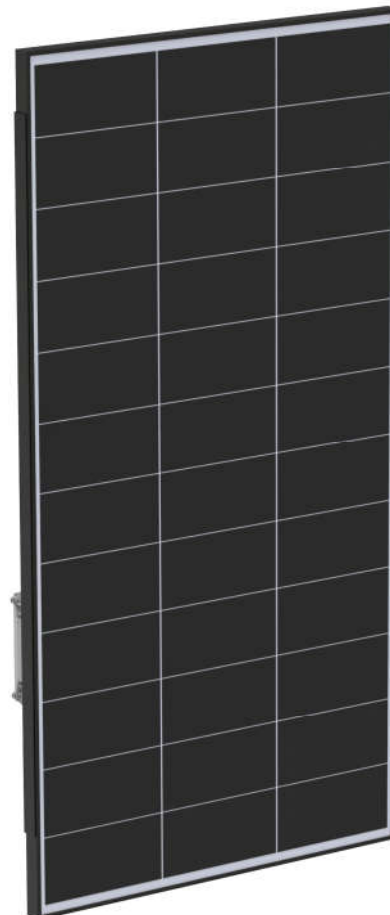
Intelligent rapid flash charging
monocrystalline silicon photovoltaic panels

MPPT smart fast charging

Can be fully charged in 3.5 hours under normal sunlight

Does it have battery protection function?

Intelligently adjust power and lighting duration based on current battery capacity



**IP67 Supply system
Modules, Waterproof
for the Outdoor use**



High safety LiFePO4

The use of industry brand lithium iron battery

Excellent Long lifespan battery ensures lighting continuous



High-strength bracket

Wind resistance up to level 16

Easy installation

No cable and easy maintenance

PROFESSIONAL SOLAR LIGHT ONE-STOP SUPPLIER

Focus on solar street lighting for 17 years

Solar lights specialist, Global dealers supplier



[Click For Product](#)



Ryan(Zhuhai)Intelligent Technology Co., Ltd

Add: Nanping Science Park, Xiangzhou District, Zhuhai City,

Guangdong China