
SS2204

4G INTERCOM & ACCESS CONTROL

OPERATING MANUAL



For Models: SS2204-4G

For your protection, read these instructions completely

And keep them for future reference.



TABLE OF CONTENTS

IMPORTANT SAFETY INSTRUCTIONS 3

INTRODUCTION 4

PARTS LIST 4

INSTALLATION 5

Intercom Unit 5

Wiring Diagram 6

LED Indicators 6

INTERCOM OPERATIONAL 7

Enter Listener Monitoring Mode 9

Enter Access Control Mode 9

Enter Programming Mode 9

Programming 10

DOOR /GATE RELEASE (RING IN TO OPEN)11

1. Caller ID recognition to open 11

2. Access control password to open 12

CHECK GSM SIGNAL STRENGTH (0~31 LEVELS)13

CHECK RELAY STATUS13

ADMINISTRATOR NUMBER13

CHECK A LOG OF DIAL IN AND DIAL OUT NUMBERS VIA E-MAIL14

CHECK A LOG OF DIAL IN AND DIAL OUT NUMBERS VIA SMS16

LOG DATA REPLY:17

USER COMMANDS18

HOW TO RESET THE HARDWARE WHEN YOU FORGET YOUR PASSWORD21

SPECIFICATIONS21

QUICK PROGRAMMING VIA SMS22

TROUBLESHOOTING (Q &A)23

Thank you for purchasing SS2204 4G Intercom. Please read this manual carefully before using. Be sure to keep this manual for future reference in case of any problem or question should arise.

Important Safety Instructions

When using this SS2204 4G Intercom, basic safety precautions should always be followed to reduce the risk of fire, electric shock and personal injury. Please read the following before using your equipment.

1. Follow all warnings and instructions on the product.
2. Unplug all the connections of product before cleaning. Do not use liquid cleaners or aerosol cleaners. Use a damp cloth for cleaning.
3. Do not use this product near water.
4. Do not use this product near an area where there is a potential of gas leaks or near any fumes that can be explosive.
5. Do not place this equipment near or over a radiator or any other heat source.
6. Do not overload the wall outlet or power cord where the power adapter is installed. This can result in fire or electric shock
7. Avoid spilling liquid on this equipment and do not insert any objects through the ventilation slots.
8. Avoid using the equipment during an electrical storm. There is a remote risk of electrical shock from lightning.

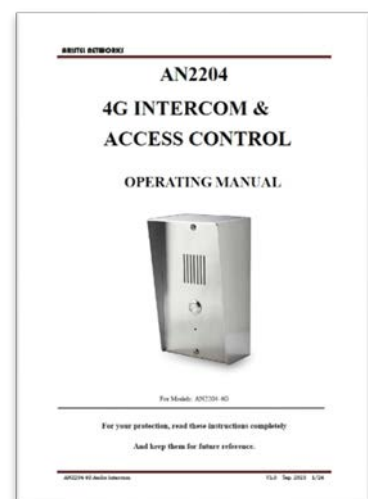
Introduction

The 4G Intercom SS2204 is an intercom system, installed at the entrance of a building. It is an ideal product replacing the traditional door phone. It allows you to speak with visitors standing at the entrance of your company or house entrance from a remote location. A visitor, by simply pressing the call button establishes a mobile call with you. During the call, you will be able to activate 1 or 2 relays.

This SS2204 4G Intercom gives you the opportunity not only to know who is waiting at the entrance from a remote location but also to control the access point. Use of SS2204 4G Intercom at your premises requires a power source.

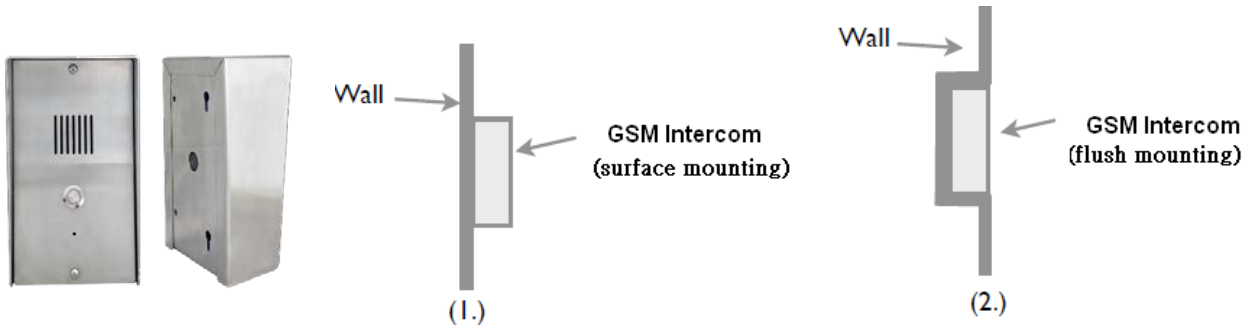
Parts list

Item	Description	Q'ty	Included	Optional
1	SS2204 - 4G Intercom	1	☉	
2	Power adapter	1	☉	
3	External antenna	1	☉	
4	Mounting Bracket for antenna	1	☉	
5	Operational manual	1	☉	



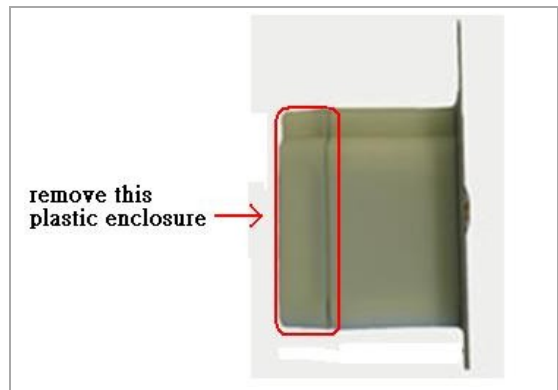
Installation

This 4G Intercom is suitable for both flush and surface mounting.

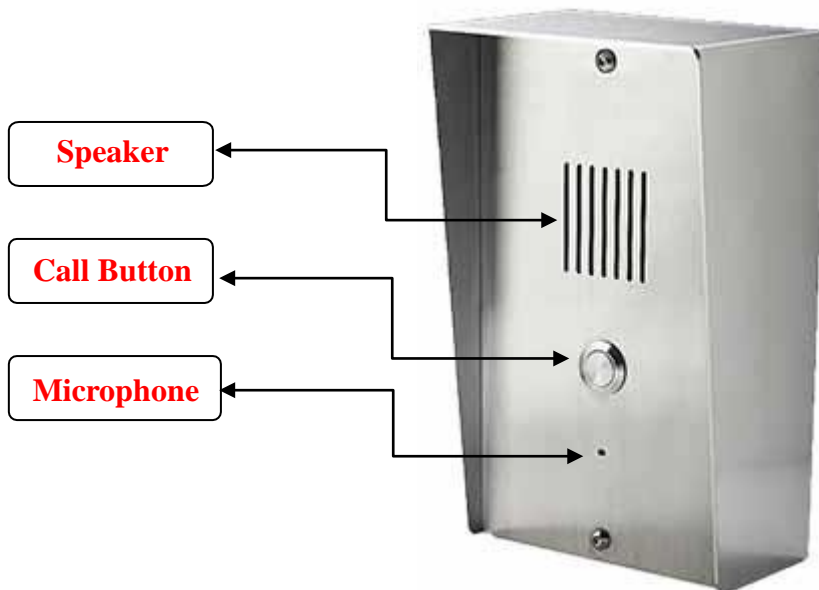


Note:

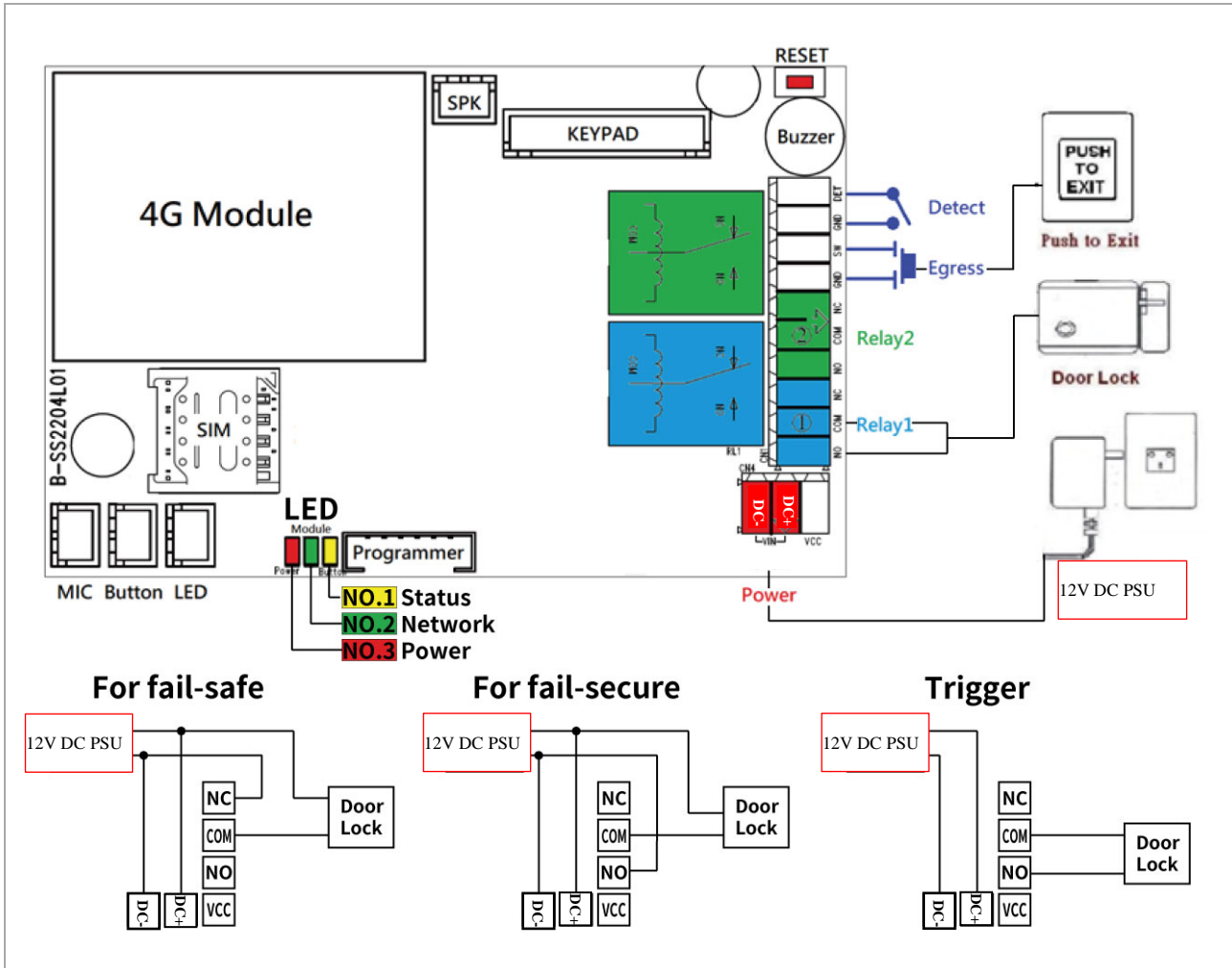
For surface mounting, you will have to remove the plastic enclosure before fitting main station into the stainless steel cabinet



Intercom Unit



Wiring Diagram



LED Indicators

NO. 1 LED

“Intercom Status” Indicator

Yellow LED	Status
Standby	Flashing
Using	Solid

NO. 2 LED

“Network” Indicator

Green LED	Status
Ready	Flashes once per 3 seconds
Searching	Flashes once per second
Busy	Solid

NO. 3 LED

“Power” Indicator

Red LED	Status
Power on	Solid
Power off	Off

1. SIM card: Register your SIM card with the network, and check it works in a mobile phone. You MUST remove the PIN code from the SIM before inserting it in the unit. Ensure the power is OFF before inserting the SIM card. Carefully slide the SIM holder in the OPEN direction, insert the SIM, and slide in the CLOSED direction to lock it in place.
2. Antenna: Install the antenna as high as possible on the top of the pillar for best possible reception.
3. Door Lock: Connect an electric door lock to terminals marked “door latch”.
4. Power Supply: Connect a 12-volt DC power supply to terminals marked “AC, AC” The power supply should be capable of supplying a constant current of no less than 1amp.
5. After a final check of wiring, switch on the power
6. Allow 20~30 seconds for the unit to boot up and detect the network. Once a successful connection has been made, the unit will sound a confirmation tone and the status LED will begin flashing.

Intercom operational

When the visitor pushes the call button to activate the SS2204 ring tone will be heard from the 4G Intercom. At the same time connection is established with the first phone number that is stored in the SS2204. If the first number is busy or not answered the call can be diverted to the second and the third. The remote phone answers the call from the SS2204 and starts conversation with the visitors. During conversation press * on your mobile for door open. The relay switches can also be temporarily or permanently switched on or off by press # and 1.

Enter system menu

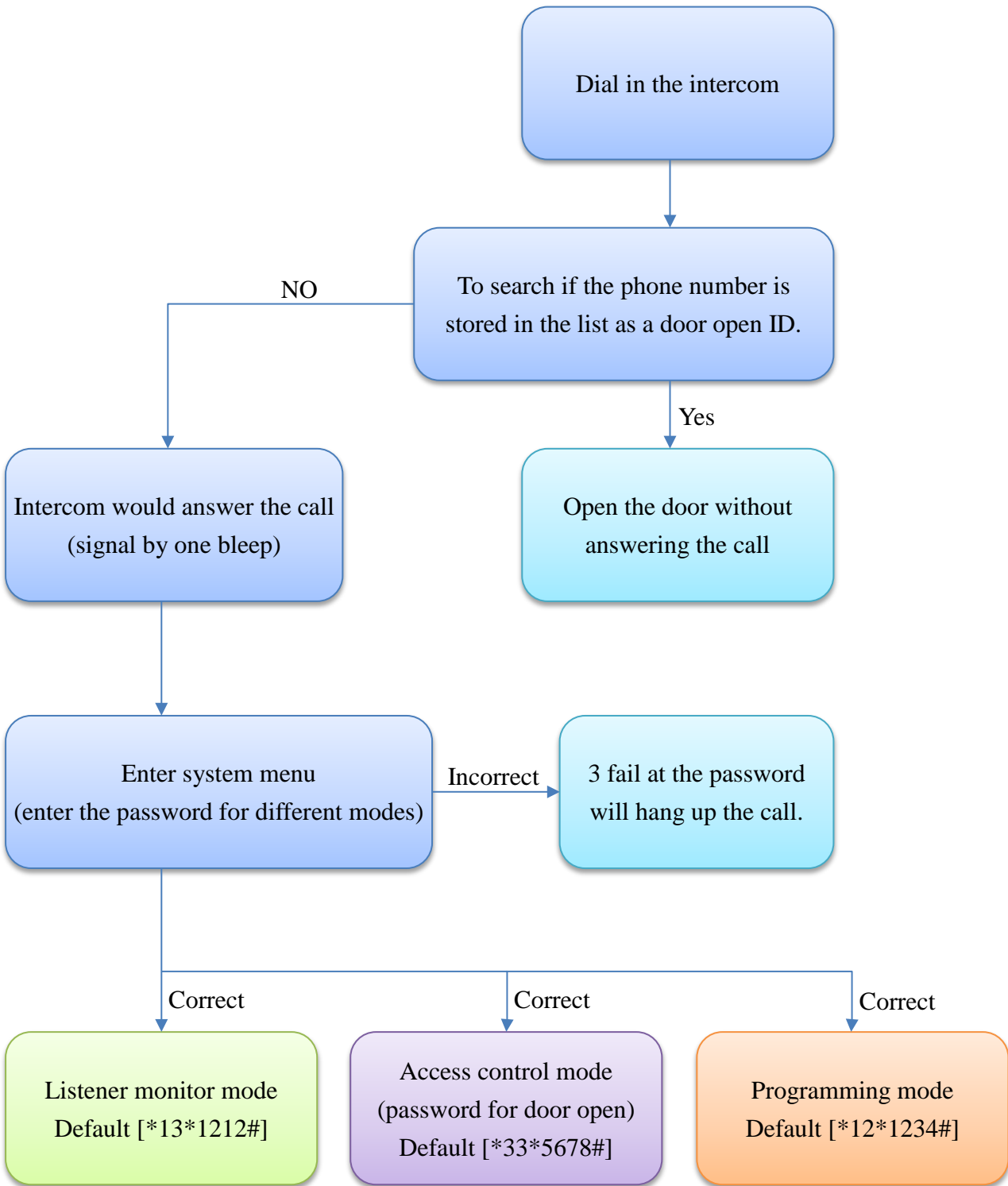
There are three different modes under system menu.

- Listener monitoring mode
- Access control mode
- Programming mode

To gain access to the system menu via dial in, follows these steps:

1. Call the telephone number of the 4G Intercom
2. Wait for the intercom to answer and signal by one beep to enter system menu
3. Enter the password of the mode you would like to enter
4. Password correct one beep, password error 3 beeps.
5. 3 failed attempts at the password will hang up the call

System flow chart



Enter Listener Monitoring Mode

1. You will hear a “Do” tone to enter listener monitoring mode by pressing 【*13*1212 #】 where 1212 is the monitoring password.
2. You can hear the live sound of the device’s surrounding environment but the speaker is OFF in monitor mode.
3. Enter "35#" to turn on the speaker Then you can talk tow-way audio and control the relay output.

Enter Access Control Mode

1. Call the telephone number of the 4G Intercom.
2. This device will then verify your phone number with your predefined numbers.
3. You will hear a “Do” tone to enter access control mode by pressing 【*33*5678 #】 where 5678 is the password.
4. The door will be opened after enter the correct password
*(To open the door by password, if the number is not stored in the access control section)

Enter Programming Mode

1. Call the telephone number of the 4G Intercom
2. This device will then verify your phone number with your predefined numbers.
3. You will hear a “Do” tone to enter into programming mode by pressing 【*12* 1234 #】 where 1234 is the password.
4. You are now in the “programming mode”
Note: At the end of each command there can be one of the two indications: Successful: a long “beep” tone, failed: three short “beep” tone.
5. To make changes on settings please refer to the user commands.
6. To end programming mode just hang up.

NOTE:

***To be successful in programming, originate a call from a land line and enter the digits slowly or using programming by text message.**

Programming

Programming can be carried out either by dial into the 4G Intercom or by text message

Programming by text message

Programming by text message is the simplest way to customize the settings of the 4G Intercom and add or delete telephone numbers. Simply send texts in the format to the telephone number of the SIM within the 4G Intercom.

Note:

1. A Single SMS text messages is limited to 140 characters.
2. You can program many different user command codes in one text message with SMS command format. *12*1234 # [command Code1] # [command Code 2] # [command Code3] #.....
3. Each SMS must start with the pass code, default 1234 in the following format *12*1234 # Followed immediately by a command.
4. To program a call button numbers DO NOT enter country code, just the complete number as you would dial it.

Example:

Storing a call button phone number (Max 5 numbers) and delete phone numbers.

058 57235 (landline number 1)
086 5682554 (mobile number 2)
086 2235644 (mobile number 3)

Command to use: *12*1234#1[Y][phone number]#
Y= number 1, 2 , 3 , 4 , 5

SMS format: (storing a call button phone numbers)

*12*1234#1105857235#120865682554#130862235644#

SMS format: (delete 2&3 phone numbers from a call button)

*12*1234#12*#13*#

User command code CORRECT

SMS format:

*12*1234#1105857235#120865682554#130862235644#

SMS reply:

1105857235#120865682554#130862235644# OK

User command code ERROR (user command 19 error)

SMS format: *12*1234#1105857235#190865682554#130862235644#

SMS reply: 110587235#190865682554# Error

Programming by dial in

Note: programming dial in can't be used from telephones which are already programmed to open the door when they dial the 4G Intercom but you can disable Caller ID display (withhold the number) on the mobile before using.

To gain access to the programming mode via dial in, follows these steps:

Example:

Storing a telephone number for dial-in door release

1. Enter Programming Mode by Pressing.....

***12*1234#** (1234 is default password)

A successful pass code will produce a single long beep. A failed attempt will produce 3 short beeps.

2. You may now program up to 1152 telephone numbers into memory. Use the following commands to program the unit

*** Insert international country code (1~3 digits): 71 [country code] #**

*** Add a number (up to 1152 numbers):72[relay 1 or 2][telephone number] #**

*** Delete a number: 73 [telephone number]**

*** Delete all numbers: 73*#**

Door /Gate Release (ring in to open)

This 4G Intercom also has an extra feature to allow user to gain access from their mobile phone by two methods.

1. Caller ID recognition
2. by access control password mode

1.Caller ID recognition to open

Ring in to open the door for authorized guests' telephone numbers. It can support up to 1000 users.

When the 4G Intercom receives a call from a user, it will check the calling number and if the number is in the list, the 4G Intercom will drop the call and open the gate/door. The 4G Intercom doesn't answer the call, it simply checks the caller ID, so it won't cost you anything to open the gate/door.

For Caller ID recognition to open the door or gate, you need to program the mobile numbers and country code into the memory before using it.

Example:

Ireland Country code: 353 (UK: 44 / USA: 1)

086 5683624 (mobile number 1)

086 5682554 (mobile number 2)

086 2235644 (mobile number 3)

Command to use: *12*1234#71[country code]#72[relay 1 or 2][phone number] #72[relay 1 or 2][phone number] #....

SMS format:

*12*1234#71353#7210865683624#7220865682554#7210862235644#

To delete phone numbers of dialing in to open

SMS format: (to delete phone number 1 and 2)

*12*1234#730865683624#730865682554#

SMS format: (to delete all numbers)

*12*1234#73*#

After the numbers are programmed you can also send a text message to check the stored numbers by sending SMS format *21#, then the 4G Intercom will reply to the phone number list text message.

2. Access control password to open

Dial the SIM card telephone number. The unit will answer the call and you will hear a bleep tone.

To trigger relay1 door by pressing *33*5678#

To latch or hold open relay1 door by pressing *34*5678#

To unlatch relay1 door by pressing *35*5678#

*Above operation same as sending SMS commands

*This is for door open option for telephone numbers not stored.

Check signal strength (0~31 levels)

When a request for signal strength SMS is sent to the 4G Intercom it will reply with a signal strength code and service provider name. The code will be between 0~31 means the signal level is from poor to best.

Example:

SMS format *20#

SMS reply: Vodafone Signal Level = 31 **【Signal is very strong】**

Check Relay Status

You can send SMS command code to check relay status. SMS format *22#

SMS Reply Relay=ON Detect = ON **【Relay=Hold , Detect=GND】**

NOTE:

Terminal mark” Detect” (see wiring diagram) is for you to connect a door reed switch. The gates would have a reed switch wired through the” DET” input to ground. It’s used by the user to check if the gates are open or closed.

Administrator Number

Once the administrator number is stored, the unit will only accept programming from this number and only via SMS programming.

Example:

Program a mobile number as an administrator number via SMS Mobile number: 0865682554

Command to use *12*1234#74 [Admin number]#

SMS format *12*1234#740865682554#

To delete the Admin number *12*1234#74*#

Check the log of dial in and dial out numbers via E-mail

This system allows you to save dial in numbers log and will then automatically send the record via e-mail or SMS as your request.

There is a list of commands you need and examples to guide you on the settings for this feature. Please setup following required parameters and commands before you can use it.

	Function	SMS command codes
1	Auto sending a log of dial in numbers	*12*1234#83[X]# X= 0 (sending when it reaches 100 numbers)- default X=1 (sending when it reaches 200 numbers, Max)
Sending record when it reaches 200 numbers. / command code example: *12*1234#831#		
2	Way of sending a log of dial in numbers via e-mail or SMS	*12*1234#84[X]# X=0 (no saving /sending record) X=1 (via SMS, 4 numbers limited/SMS) X=2 (via E-mail)
Sending record via email / command code example: *12*1234#842#		
3	GPRS parameters setting	*40*1234#APN, auth_type,user name,password# auth_type: 0= none / 1= PAP / 2= CHAP
4	E-mail parameters setting	*41*1234# type,SMTP server,Port,User name>Password,E-mail address,E-mail sender name#
5	Recipient & Carbon copy settings	*42*1234# recipient e-mail address,recipient name,carbon copy e-mail address,carbon copy name#
<p>Commande code example:</p> <p><u>*42*1234#</u> <u>michael@gainwise.com</u>,<u>MICHAEL</u>,<u>ivy@gainwise.com</u>,<u>IVY</u># (complete setting) pass code recipient email address recipient carbon copy carbon copy name email address name</p> <p><u>*42*1234#</u> <u>michael@gainwise.com</u>,<u>ivy@gainwise.com</u>,# (recipient/carbon copy name can be omitted) pass code recipient email address carbon copy email address</p> <p><u>*42*1234#</u> <u>michael@gainwise.com</u>,<u>MICHAEL</u>,, # (carbon copy can be omitted) pass code recipient email address recipient name</p>		

	Function	SMS command codes
6	E-mail subject setting	*43*1234# e-mail subject#
7	To immediately send current dial in numbers log via email or SMS	*44*1234# SMS reply: successful or failed
8	Check parameters setting	*4[X]*1234# X=0 (reply GPRS parameters) X=1 (reply e-mail parameters) X=2 (reply recipient & carbon copy) X=3 (reply e-mail subject)
Check GPRS parameters setting / Command code example: *40*1234#		
9	SIM phone number used in intercom for Clock date and time correction	*12*1234#86 [X] # X= mobile number
<p>Remark: why you need to setup the number for system time clock date and time correction?</p> <p>This device has a time clock and supports automatically updating their date and time via NITZ information from network. In case some of the networks are not available for NITZ information, we strongly suggest to setup this clock date and time correction. When the device detects NITZ information is not available from the network will automatically send a command to itself via the SIM card used in the intercom for time correction which will keep your “dial in numbers log” with correct date and time.</p>		

Check the log of dial in and dial out numbers via SMS

There are 3 programming codes you will need to make this feature work

1	Way of sending a log of dial in numbers via e-mail or SMS	84 [X] #	X=0 no reply X=1 SMS X=2 E-mail
2	Mobile number for receiving a log of dial in numbers via SMS	85 [X] # 85*#	X= mobile number *= Delete mobile number
3	SIM phone number used in intercom for Clock date and time correction	86 [X] # 86*#	X= mobile number *= Delete mobile number

You can program many different user command codes in a single text message with SMS command format. *12*1234 # [command Code1] # [command Code 2] # [command Code3] #.....

Example:

Mobile number for receiving a log 0907967223 SIM phone number used in opener 0948778458

*12*1234#841#850907967223#860948778458#

Send *44*1234# to check log

Replied log information via SMS example:

Log Example:

001-09/02/21,13:50:45- S 10968297738-1#

002-09/02/21,13:50:45- O 10968297738-2#

003-09/02/21,13:50:45- I 10968297738-3#**N** or **E**

N: Next text message

E: End text message

Log data reply:

NO.	-	MM/DD/YY	,	Hh:mm:ss	-	Code	Relay	Number	-	Relay status	#
-----	---	----------	---	----------	---	------	-------	--------	---	--------------	---

Code:	Relay:	Number:	Relay status:
O : incoming call without action	0: no relay	- Phone number	1: relay 1 trigger
I : incoming call to trigger relay	1: relay 1		2: relay 1 hold
P : PIN code to trigger relay	2: relay 2	- Householder number* stored number order	3: relay 1 release
M: monitor call to activate relay			4: relay 2 trigger
R : incoming call and enter password to activate relay		- PIN code	5: relay 2 hold
S : SMS to activate relay			6: relay 2 release
T : during the call, householder to activate relay			

NOTE: The early version log shows "NO@", and the new version log shows "NO-", they are the same

<p>Log Example:</p> <p>001-09/02/21,13:50:45- S 10968297738-1#</p> <p>002-09/02/21,13:50:45- O 10968297738-2#</p> <p>003-09/02/21,13:50:45- I 10968297738-3#</p>
--

User commands

To gain access to the different modes and control relay (by dial in)

No.	Function	command	Description	Default
1	Enter Programming Mode	*12* [password] #	Programming by calling	1234
2	Enter Monitoring Mode	*13* [password] #	To hear the surroundings where the intercom installed	1212
3	Enter Access control Mode (Trigger relay1)	*33* [password] #	Password mode access option	5678
4	Hold Relay1	*34* [password] #	To hold relay to keep door opened	5678
5	Release Relay1	*35* [password] #	To release relay for door close	5678
6	Enter Access control Mode (Trigger relay2)	*36* [password] #	Password mode access option	5678
7	Hold Relay2	*37* [password] #	To hold relay to keep door opened	5678
8	Release Relay2	*38* [password] #	To release relay for door close	5678

User commands to check system info & control relay via SMS

No.	Function	Command	Reply
1	check signal strength	*20#	Signal Level 0~31 from poor to best Service provide name, network
2	Check stored numbers	*21#	O [number]...,I [number]....E (N) O : call button numbers list I : dial in to open numbers list E : End N : Next SMS
3	Check relay status	*22#	Relay [status],Detect [status] Status: ON / OFF
4	Modify the SMS content of Detect PIN triggered	*26 [password] # [SMS Content]	Reply [SMS Content]
5	Trigger relay1	*33* [password] #	No reply (default password:5678) (Latch on when relay is on hold status)
6	Hold relay1	*34* [password] #	No reply (default password:5678)
7	Release relay1	*35* [password] #	No reply (default password:5678)
8	Trigger relay2	*36* [password] #	No reply (default password:5678) (Latch on when relay is on hold status)
9	Hold relay2	*37* [password] #	No reply (default password:5678)
10	Release relay2	*38* [password] #	No reply (default password:5678)
	• SMS data error	(Only 0~9 、 * 、 # are available)	SMS Data Error
	• Function code error		Function Code Error

11	Setting value query	*50*[password] #...#	Ex. To query the setting value of 50~55 *50*1234#50#51#52#53#54#55# SMS return content 50,0001# 51,0001# 52,20# 53,060# 54,01# 55,00# End
----	---------------------	------------------------	--

User commands table

You can program many different user command codes in one text message with SMS command format. *12*1234 # [command Code1] # [command Code 2] # [command Code3] #.....

No.	Feature	Command	Description	Default
1	Change programming Password	01 [password] #	password:4 digit codes	1234
2	Change access control password	02 [password] #	password:4 digit codes	5678
3	Change monitoring mode password	03 [password] #	password:4 digit codes	1212
4	Store a call button phone number	1 [Y] [phone number] #	Y= phone number 1,2,3,4 or 5 Max 5 phone numbers phone No.:3~15 digit codes	
5	Delete a call button Phone number	1[Y]*#	Y= phone number 1,2 or 3 phone No.:3~15 digit codes	
6	Speaker Volume	3 [speaker volume] #	speaker volume level:0 ~ 4	3
7	Microphone Volume	4 [microphone volume] #	microphone volume level:0 ~ 4	3
8	Relay Time1	51 [relay time] #	relay time: 1~9999 sec	1
9	Relay Time2	50 [relay time] #	relay time: 1~9999 sec	1
10	Call no answer time and divert to next number	52 [no answer time] #	No answer time :10~99 sec	20 sec
11	Max call Time	53 [max call time] #	Max call time:005~999 sec	060 sec
12	Max monitoring time	55[duration time] #	duration time:00 ~ 60 mins 00 (no limit)	10 mins
13	Change relay1 trigger code	61 [X] #	X=0~9 / * / #	*
14	Change relay1 hold code	63 [X] #	X=0~9 / * / #	*
15	Change relay1 release code	64 [X] #	X=0~9 / * / #	*
16	Change relay2 trigger code	67 [X] #	X=0~9 / * / #	7



17	Change relay2 hold code	68 [X] #	X=0~9 / * / #	7
18	Change relay2 release code	69 [X] #	X=0~9 / * / #	7
19	Call in mode	65 [X] #	X=1 Setting mode X=2 Call mode X=3 Reject call	1

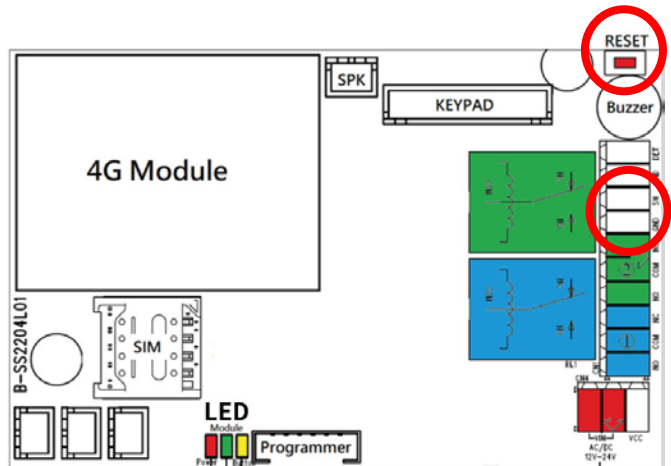
20	Ring in to open the door (Max: 1152 numbers)	71 [country code] # 72[relay] [phone number] # 73 [delete phone number] # 73*#	Country code:1~3 digit codes relay: 1 or 2 Number: 3~15 digit codes Delete number: 3~15 digit codes Del all phone numbers	
21	Add administrator phone number	74 [admin number] #	admin number: 3~15 digit codes (no number no restriction)	
22	Del administrator phone number	74*#	delete administrator phone number	
23	Auto sending a log of dial in numbers	83 [X] #	X= 0 (sending when it reaches 100 numbers)- default X=1 (sending when it reaches 200 numbers, Max)	0
24	Way of sending a log of dial in numbers via e-mail or SMS	84 [X] #	X=0 no reply X=1 SMS X=2 E-mail	0
25	Mobile number for receiving a log of dial in numbers via SMS	85 [X] # 85*#	X= mobile number *= Delete mobile number	
26	SIM phone number used in intercom for Clock date and time correction	86 [X] # 86*#	X= mobile number *= Delete mobile number	
27	SMS reply notice	894+X#	X=0 (disable) X=1 (enable) SMS replay: Relay 1 trigger, relay 2 trigger Relay 1 hold, relay 2 hold Relay 1 release, relay 2 release	
28	Call button LED flashing	896+X#	X=0 (disable) X=1 (enable)	
29	Dial tone volume	898+X#	X=1~4 (levels)	
30	Pin DET type	902+Type#	0 : Disable 1 : Egress mode(901)	

			2 : Trigger 3 : Resistance=10KΩ(7.5K~13K)
31	Reset	999#	reset default

How To Reset The Hardware When You Forget your Password

Reset the hardware

- 1.first keep reset button (RED) pressed
- 2.then press engress button
- 3.release all buttons after you hearing continuous "Dou" tones
- 4.hardware reset finished



Specifications

Operating Voltage	DC 12V
Operating Current	Maximum 250 mA, Typically 55mA
2G / 3G / 4G Frequency	<p>SS2204-EC: LTE FDD: B1/B3/B7/B8/B20/B28A WCDMA: B1/B8 GSM: B3/B8</p> <p>SS2204-A: LTE FDD: B2/B4/B12 WCDMA: B2/B4/B5</p> <p>SS2204-AU: LTE FDD: B1/B2/B3/B4/B5/B7/B8/B28 LTE TDD: B40 WCDMA: B1/B2/B5/B8 GSM: B2/B3/B5/B8</p>
Physical size	Face plate: 170 x 100 mm, Stainless cabinet: 174 x 113 x 65 mm
Length of antenna	3 meters cable
Humidity	Less than 80% RH
Operating Temperature	-20°C to 50°C

Quick programming via SMS

Program a call button phone number. (Max 5 numbers).

Note: To program a call button numbers DO NOT enter country code, just the complete number as you would dial it.

Command to use: *12*1234#1[Y][phone number]#

Y= number 1, 2, 3, 4, 5

Examples:

058 57235 (landline number 1)

086 5682554 (mobile number 2)

086 2235644 (mobile number 3)

SMS format: *12*1234#105857235#120865682554#130862235644#

Program a phone number for dial in door release (Max 1152 numbers).

Note: Program a phone number for dial in door release you NEED TO enter country code

Command to use: *12*1234#71[country code]#72[relay 1 or 2][phone number] #72[relay 1 or 2][phone number] #72[relay 1 or 2][phone number] #.....

Example:

Ireland Country code: 353 (UK: 44 / USA: 1)

086 5683624 (mobile number 1)

086 5682554 (mobile number 2)

086 2235644 (mobile number 3)

SMS format: *12*1234#71353#7210865683624#7220865682554#7210862235644#

Sending SMS commands

*33*5678# (momentary trigger relay 1)

*34*5678# (hold relay 1)

*35*5678# (release relay 1)

*20# (check reception level of intercom)

*21# (check stored number. The unit will reply with list of stored numbers. I= dial in / O= dial out)

*22# (check gate / door status)

Troubleshooting (Q &A)

Q. The unit powers up but there is a bleeping from the door station.

A. This means the unit is not able to detect the network for some reason.

-Check the SIM card is activated and has calling credit.

-Power off the unit, remove the SIM and check it in a mobile phone to verify it can make a call.

-Check the SIM does not ask for a PIN code when put in a phone. If it does, then disable the PIN code request.

-Check the SIM is an active 4G SIM. If you are unsure, contact your SIM card provider to verify.

-Check the reception is good. Poor reception will result in failed calls.

-Check the antenna has been mounted as high as possible, not near large metal objects, or wet green shrubs etc.

-Check the antenna connection. Visually inspect that the center pin inside the antenna is intact, and has not been pushed back inside the fitting.

Q. The unit calls the first number, but there is not enough time to answer before it diverts to the next number.

A. Increase the no answer time as per programming instructions.

Q. The unit calls the first number but voicemail comes on before it can ring the second number.

A. Increase the ring time before voice mail answers as per your network programming instructions. on the called mobile phone(s). Alternatively , you can decrease the ring time of the intercom .

Q. The caller ID part does not work.

A. Be sure to program the caller ID part under 72 features. If your number is a private or number withheld, then it will not work.

Even if you have already programmed a number to receive a call from the intercom, if you also want that number to have caller ID access, it must be programmed under the 72 features also. Ensure the number is entered as you would normally dial it from another phone.

Q. There is no audio from the gate, but the person at the gate can hear ok.

A. This can be due to low reception.

-Check reception level by *20#.

-Change SIM card if necessary, to another network which may have better coverage.

-Purchase a high gain antenna.

Q. The audio quality that can be heard on the remote telephone is poor or humming (buzzing).

A. This can be caused by the antenna being mounted too close to the speech panel or not mounted high enough.

-Try earthing the speech panel chassis to 0V of the power supply.

-This is also a symptom of poor reception. Try above steps on checking and improving reception.

Q. The * or # key does not work when the intercom calls a phone.

A. Check if you can hear the relay clicking at the gate when the * or # key is pressed during a call. If it can be heard, then the system is working, check wiring between the relay and the lock or gate panel. If the relays do not make a clicking sound, then check this feature on a different mobile cell phone or landline. If it works on a different phone, check the settings on the phone in question under DTMF tones. Failure of DTMF tones to operate correctly is also a symptom of low reception. Check steps above on improving reception. Try pressing the buttons longer when attempting to activate the gates or door.