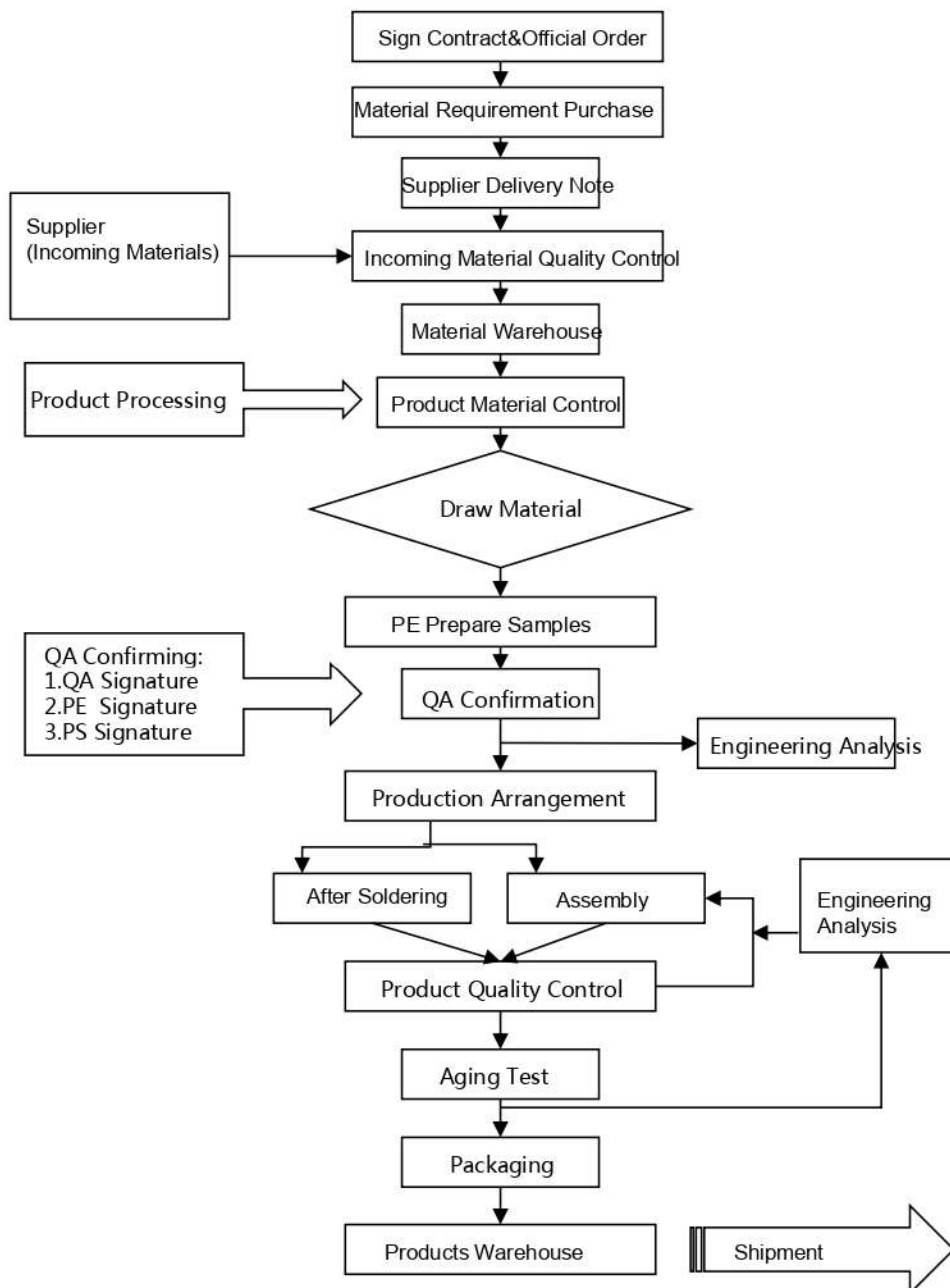


PCBA Process Chart



PCBA Technical requirement:

- 1) Professional Surface-mounting and Through-hole soldering Technology
- 2) Various package sizes like 01005,0201,0402,0603,0805,1206 components SMT technology
- 3) ICT(In Circuit Test),FCT(Functional Circuit Test) technology
- 4) PCB Assembly With UL,CE,FCC,Rohs Approval
- 5) Nitrogen gas reflow soldering technology for SMT
- 6) 8 High-standard SMT Produce Lines &6 Solder Assembly Produce Lines
- 7) High density interconnected board placement technology capacity.