



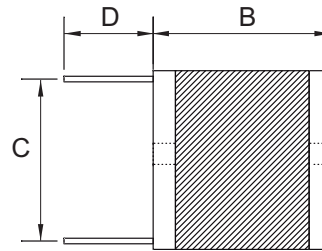
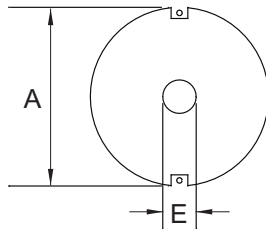
Features

- Varnish coated or UL tube
- Wire wound construction
- High current, low DCR

Applications

- Electronic Appliance
- Power Supplies
- TRIAC/SCR Control Circuits

► Dimensions & Configurations (Unit:mm)



Type	A (max)	B (max)	C typ	D ± 3	E (min)
MIRD01	16.5	21.5	12.0	15.0	3.0
MIRD02	21.1	21.5	15.0	15.0	3.0
MIRD03	28.0	21.5	22.0	15.0	5.0
MIRD04	40.0	28.0	30.0	15.0	3.6

Note: Design as Customer's Requested Specifications.

▶ Electrical Characteristics For MIRD01 Series

Part Number	Inductance [μ H]	DCR(max) [Ω]	IDC(max) [A]
MIRD01 - 1R0K	1.0	0.003	9.0
MIRD01 - 1R2K	1.2	0.003	9.0
MIRD01 - 1R5K	1.5	0.004	9.0
MIRD01 - 1R8K	1.8	0.004	9.0
MIRD01 - 2R2K	2.2	0.005	9.0
MIRD01 - 2R7K	2.7	0.005	9.0
MIRD01 - 3R3K	3.3	0.005	9.0
MIRD01 - 3R9K	3.9	0.006	9.0
MIRD01 - 4R7K	4.7	0.007	9.0
MIRD01 - 5R6K	5.6	0.007	9.0
MIRD01 - 6R8K	6.8	0.008	9.0
MIRD01 - 8R2K	8.2	0.009	9.0
MIRD01 - 100K	10	0.010	9.0
MIRD01 - 120K	12	0.011	9.0
MIRD01 - 150K	15	0.015	7.2
MIRD01 - 180K	18	0.016	7.2
MIRD01 - 220K	22	0.025	5.5
MIRD01 - 270K	27	0.030	4.5
MIRD01 - 330K	33	0.040	4.0
MIRD01 - 390K	39	0.046	4.0
MIRD01 - 420K	42	0.050	3.8
MIRD01 - 470K	47	0.062	2.8
MIRD01 - 560K	56	0.069	2.8
MIRD01 - 680K	68	0.077	2.8
MIRD01 - 820K	82	0.083	2.8
MIRD01 - 101K	100	0.095	2.8
MIRD01 - 121K	120	0.127	2.0
MIRD01 - 151K	150	0.181	1.6
MIRD01 - 181K	180	0.217	1.6
MIRD01 - 221K	220	0.240	1.6
MIRD01 - 271K	270	0.300	1.6
MIRD01 - 331K	330	0.336	1.3
MIRD01 - 391K	390	0.460	1.0
MIRD01 - 471K	470	0.636	0.8
MIRD01 - 561K	560	0.696	0.8

► Electrical Characteristics For MIRD02 Series

Part Number	Inductance [μ H]	DCR(max) [Ω]	IDC(max) [A]
MIRD02 - 1R0K	1.0	0.003	11.4
MIRD02 - 1R2K	1.2	0.003	11.4
MIRD02 - 1R5K	1.5	0.003	11.4
MIRD02 - 1R8K	1.8	0.003	11.4
MIRD02 - 2R2K	2.2	0.004	11.4
MIRD02 - 2R7K	2.7	0.005	11.4
MIRD02 - 3R3K	3.3	0.005	11.4
MIRD02 - 3R9K	3.9	0.005	11.4
MIRD02 - 4R7K	4.7	0.005	11.4
MIRD02 - 5R6K	5.6	0.006	11.4
MIRD02 - 6R8K	6.8	0.007	11.4
MIRD02 - 8R2K	8.2	0.007	11.4
MIRD02 - 100K	10	0.009	11.4
MIRD02 - 120K	12	0.009	11.4
MIRD02 - 150K	15	0.013	9.0
MIRD02 - 180K	18	0.018	7.2
MIRD02 - 220K	22	0.019	7.2
MIRD02 - 270K	27	0.026	5.5
MIRD02 - 330K	33	0.029	5.5
MIRD02 - 390K	39	0.030	5.5
MIRD02 - 470K	47	0.035	5.5
MIRD02 - 560K	56	0.039	5.5
MIRD02 - 680K	68	0.053	4.8
MIRD02 - 820K	82	0.060	4.8
MIRD02 - 101K	100	0.080	4.0
MIRD02 - 121K	120	0.090	4.0
MIRD02 - 151K	150	0.098	4.0
MIRD02 - 181K	180	0.110	4.0
MIRD02 - 221K	220	0.150	2.8
MIRD02 - 271K	270	0.213	2.0
MIRD02 - 331K	330	0.305	1.6
MIRD02 - 391K	390	0.320	1.6
MIRD02 - 471K	470	0.355	1.6
MIRD02 - 561K	560	0.388	1.6
MIRD02 - 681K	680	0.430	1.6
MIRD02 - 821K	820	0.590	1.3
MIRD02 - 102K	1000	0.818	1.0
MIRD02 - 122K	1200	1.140	0.8
MIRD02 - 152K	1500	1.260	0.8
MIRD02 - 182K	1800	1.390	0.8
MIRD02 - 222K	2200	1.540	0.8

► Electrical Characteristics For MIRD03 Series

Part Number	Inductance [μ H]	DCR(max) [Ω]	IDC(max) [A]
MIRD03 - 1R0K	1.0	0.003	21.0
MIRD03 - 1R2K	1.2	0.003	21.0
MIRD03 - 1R5K	1.5	0.003	21.0
MIRD03 - 1R8K	1.8	0.003	21.0
MIRD03 - 2R2K	2.2	0.003	21.0
MIRD03 - 2R7K	2.7	0.003	21.0
MIRD03 - 3R3K	3.3	0.003	21.0
MIRD03 - 3R9K	3.9	0.003	21.0
MIRD03 - 4R7K	4.7	0.003	21.0
MIRD03 - 5R6K	5.6	0.003	21.0
MIRD03 - 6R8K	6.8	0.004	21.0
MIRD03 - 8R2K	8.2	0.004	21.0
MIRD03 - 100K	10	0.006	17.0
MIRD03 - 120K	12	0.008	13.5
MIRD03 - 150K	15	0.009	13.5
MIRD03 - 180K	18	0.010	13.5
MIRD03 - 220K	22	0.011	13.5
MIRD03 - 270K	27	0.012	13.5
MIRD03 - 330K	33	0.017	13.5
MIRD03 - 390K	39	0.022	11.4
MIRD03 - 470K	47	0.024	9.0
MIRD03 - 560K	56	0.026	9.0
MIRD03 - 680K	68	0.029	9.0
MIRD03 - 820K	82	0.032	9.0
MIRD03 - 101K	100	0.034	9.0
MIRD03 - 121K	120	0.046	7.2
MIRD03 - 151K	150	0.064	5.5
MIRD03 - 181K	180	0.072	5.5
MIRD03 - 221K	220	0.080	5.5
MIRD03 - 271K	270	0.110	4.5
MIRD03 - 331K	330	0.122	4.5
MIRD03 - 391K	390	0.169	4.0
MIRD03 - 471K	470	0.187	4.0
MIRD03 - 561K	560	0.187	4.0
MIRD03 - 681K	680	0.256	2.8
MIRD03 - 821K	820	0.320	2.0
MIRD03 - 102K	1000	0.426	2.0
MIRD03 - 122K	1200	0.462	2.0
MIRD03 - 152K	1500	0.518	2.0
MIRD03 - 182K	1800	0.705	1.6
MIRD03 - 222K	2200	1.020	1.3
MIRD03 - 272K	2700	1.140	1.3
MIRD03 - 332K	3300	1.270	1.3
MIRD03 - 392K	3900	1.670	1.0
MIRD03 - 472K	4700	1.860	1.0

► Electrical Characteristics For MIRD03 Series

PartNumber	Inductance [μ H]	DCR(max) [Ω]	IDC(max) [A]
MIRD04 - 3R3M	3.3	0.003	27.0
MIRD04 - 3R9M	3.9	0.003	27.0
MIRD04 - 4R7M	4.7	0.003	27.0
MIRD04 - 5R6M	5.6	0.004	27.0
MIRD04 - 6R8M	6.8	0.004	27.0
MIRD04 - 8R2M	8.2	0.004	27.0
MIRD04 - 100K	10	0.005	27.0
MIRD04 - 120K	12	0.005	27.0
MIRD04 - 150K	15	0.006	27.0
MIRD04 - 180K	18	0.008	27.0
MIRD04 - 220K	22	0.009	21.0
MIRD04 - 270K	27	0.010	21.0
MIRD04 - 330K	33	0.011	21.0
MIRD04 - 390K	39	0.012	21.0
MIRD04 - 470K	47	0.018	14.4
MIRD04 - 560K	56	0.019	14.4
MIRD04 - 680K	68	0.021	14.4
MIRD04 - 820K	82	0.023	14.4
MIRD04 - 101K	100	0.025	14.4
MIRD04 - 121K	120	0.028	14.4
MIRD04 - 151K	150	0.040	11.4
MIRD04 - 181K	180	0.045	11.4
MIRD04 - 221K	220	0.050	11.4
MIRD04 - 271K	270	0.056	11.4
MIRD04 - 331K	330	0.074	11.4
MIRD04 - 391K	390	0.082	9.0
MIRD04 - 471K	470	0.114	7.2
MIRD04 - 561K	560	0.125	7.2
MIRD04 - 681K	680	0.139	7.2
MIRD04 - 821K	820	0.154	7.2
MIRD04 - 102K	1000	0.216	5.5
MIRD04 - 122K	1200	0.232	5.5
MIRD04 - 152K	1500	0.324	4.5
MIRD04 - 182K	1800	0.360	4.5
MIRD04 - 222K	2200	0.494	4.0
MIRD04 - 272K	2700	0.555	4.0
MIRD04 - 332K	3300	0.773	2.8
MIRD04 - 392K	3900	0.845	2.8
MIRD04 - 472K	4700	1.140	2.0
MIRD04 - 562K	5600	1.600	2.0
MIRD04 - 682K	6800	1.760	1.6
MIRD04 - 822K	8200	1.950	1.6
MIRD04 - 103K	10000	2.760	1.3
MIRD04 - 123K	12000	3.040	1.3
MIRD04 - 153K	15000	3.390	1.3