

	深圳市宝捷源科技有限公司 ShenZhen Powerwat Technology Co.,LTD		REVISION	A
			DATE	Mar 3 rd .2015
Model No.	PW-4800250	Customer Model		

APPROVAL SHEET

FOR

Power Adapter

MODEL NO.

PW-4800250

MANUFACTURER		
EDIT	CHECK	APPROVAL

CUSTOMER APPROVAL

SHENZHEN POWERWAT TECHNOLOGY CO., LTD.

Add.: No.15,Youxiang 1st Lane,Xinsha Road,Shajing Town,Bao'an,
Shenzhen, 518104 China.

Tel : (86-755) 3312-8372 **Fax:** (86-755) 3318-1951

Contact person: Amy Zhang

Email: sales@powerwat.com

Website: www.powerwat.com

	深圳市宝捷源科技有限公司 ShenZhen Powerwat Technology Co.,LTD		REVISION	A
			DATE	Mar 3 rd .2015
Model No.	PW-4800250	Customer Model		

CONTENTS

1. SCOPE (适用范围)	4
2. QUOTE CRITERION (引用标准)	4
3. Electrical characteristic (电气特性)	4
4. Input Characteristics (输入特性)	4
4.1 Rated Voltage (额定输入电压)	4
4.2 Input Voltage Range (电源输入电压范围)	4
4.3 Rated Frequency (额定输入频率)	4
4.4 Frequency Range (输入频率范围)	4
4.5 Steady AC Current (额定电流)	4
4.6 Peak Inrush Current (峰值输入电流)	5
4.7 Efficiency (效率)	5
5. Output Characteristics (输出特性)	5
5.1 No Load Voltage Range (空载输出电压范围)	5
5.2 Load Voltage Range (负载输出电压范围)	5
5.3 Rated Output Current(额定输出电流)	5
5.4 Rated Power (额定功率)	5
5.5 Output Ripple and Noise (输出纹波噪音)	5
5.6 Protection (保护)	6
5.6.1 Over Current Protection (过流保护)	6
5.6.2 Short Circuit Protection (短路保护)	6
6. Reliability Items (信赖性项目)	6
6.1 Voltage dips (电源瞬断)	6
6.2 HI-POT test (高压测试)	6
6.3 Insulation Resistance (绝缘电阻)	6
6.4 Leakage Current (泄露电流)	6
6.5 EMC Standards (EMC 标准)	6
7. Environmental Requirement	6
7.1 Operating Temperature (工作温度)	6
7.2 Storage Temperature (储藏温度)	7
7.3 Operating Humidity (工作湿度)	7
7.4 Storage Humidity (储藏湿度)	7
8. Mechanical Requirement (机械要求)	7

	深圳市宝捷源科技有限公司 ShenZhen Powerwat Technology Co.,LTD		REVISION	A
			DATE	Mar 3 rd .2015
Model No.	PW-4800250	Customer Model		

8.1	Dimension (尺寸)	7
8.2	Weight (重量)	7
9.	Mechanical Characteristics (机械性能).....	7
9.1	Appearance (外观).....	7
10.	Environmental Performances(环境性能)	7
10.1	Operating at the lower temperature (低温动作)	7
10.2	Operating at the higher temperature (高温动作)	7
10.3	Storage at the lower temperature(低温放置).....	8
10.4	Storage at the higher temperature (高温放置)	8
10.5	Storage at high temperature and high humidity with the adaptor turned on. (高温高湿度放置).....	8
10.6	Storage at low temperature and low humidity with the adaptor turned on.(低温低湿度放置).....	8
11.	Drawing (外观图)	9
12.	Packing Drawing (装箱图)	9

	深圳市宝捷源科技有限公司 ShenZhen Powerwat Technology Co.,LTD		REVISION	A
			DATE	Mar 3 rd .2015
Model No.	PW-4800250	Customer Model		

1. SCOPE (适用范围)

This specification shall be applied to PW-4800S250
 本规格适用于交流开关电源适配器 **PW-4800250**

2. QUOTE CRITERION (引用标准)

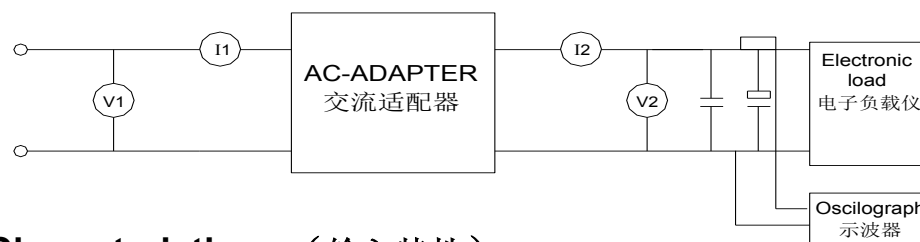
IEC 60950-1: 2001, EN 60590

3. Electrical characteristic (电气特性)

Test Circuit (测试电路)

If the test is to be made on a specified circuit, be sure to use the following circuit.

(有规定的情况下依照下面的电路进行测试。)



4. Input Characteristics (输入特性)

4.1 Rated Voltage (额定输入电压)

It is normal for **100Vac** to **240Vac** input AC voltage.
 (额定输入交流 100V~240V)

4.2 Input Voltage Range (电源输入电压范围)

The adapter shall operate from **90Vac** to **264Vac** and the range switching is unnecessary.
 (输入电压范围 90 V~264V)

4.3 Rated Frequency (额定输入频率)

It is normal for **50Hz** or **60Hz** and single phase. (额定输入频率 50Hz/60Hz)

4.4 Frequency Range (输入频率范围)

The adapter shall operate with an input frequency from **47 Hz** to **63 Hz**.
 (输入频率范围 47 Hz~ 63 Hz)

4.5 Steady AC Current (额定电流)

	深圳市宝捷源科技有限公司 ShenZhen Powerwat Technology Co.,LTD		REVISION	A
			DATE	Mar 3 rd .2015
Model No.	PW-4800250	Customer Model		

Maximum steady state input current is less than **2.5A rms**. Measured at 90Vac input and maximum load. (90V 满载时输入电流小于 **2.5A rms**)

4.6 Peak Inrush Current (峰值输入电流)

With cold starting, the peak inrush current should less than **40A**.

(电源启动时最大峰值输入电流小于 **40A**)

4.7 Efficiency (效率)

90% min. measured at **240Vac** input voltage, maximum load and include the DC cable loss, standby power consumption: 0.7 - 4W.

5. Output Characteristics (输出特性)

5.1 No Load Voltage Range (空载输出电压范围)

No load voltage (空载输出电压): **45.6V ~ 50.4V**

5.2 Load Voltage Range (负载输出电压范围)

load voltage (负载输出电压范围): **45.6V ~ 50.4V**

5.3 Rated Output Current(额定输出电流)

The output current will be performed from **2.5A** at CC mode.

(在恒压模式额定输出电流:**2.5A**)

5.4 Rated Power (额定功率)

This adapter is capable to support **120.0 Watts** max continuously at all specified conditions.(不同状态下最大输出功率能保持在 120.0W)

Note: the test shall be made under the following conditions, unless otherwise specified:

Ambient Temperature 15~35° C, Relative Humidity 35~85%RH

Air Pressure 86~106kPa

(在无特别指定条件下, 测试温度为 15~35° C、湿度为 35~85%RH、气压为 86~106kPa)

5.5 Output Ripple and Noise (输出纹波噪音)

Output ripple voltage is less than **400 mV p-p** (Full load**2.5A**) Measured methods:

Performed by 20MHz bandwidth in oscilloscope.

Applied 0.1uF ceramic capacitor and 10uF electrolytic capacitor across output connector terminals Measured at the end of DC cable.

(输出端并 0.1uF 与 10uF 电容, 限制示波器带宽 20MHz 时, 测得纹波小于 300mV p-p)

	深圳市宝捷源科技有限公司 ShenZhen Powerwat Technology Co.,LTD		REVISION	A
			DATE	Mar 3 rd .2015
Model No.	PW-4800250	Customer Model		

5.6 Protection (保护)

5.6.1 Over Current Protection (过流保护)

Output current will be limited and less than **3.0A** max

(输出电压时保护电流 **3.0A** 最大)

5.6.2 Short Circuit Protection (短路保护)

The adapter is protected that a short happened between the output terminals and shall not result in a fire hazard, any damage to this Charger and will be normal operation automatically while the short is removed.

(输出短路后, 不损坏该制品, 恢复后正常输出)

6. Reliability Items (可靠性项目)

6.1 Voltage dips (电源瞬断)

After voltage dip of 100% for 1 second, the adapter have no malfunction, output OFF shall be regarded as the normal operation.

(瞬间断电 1 秒钟, 无误动作, 输出 OFF 被定做正常动作)

6.2 HI-POT test (高压测试)

After AC 3000V 1min between input plug-DC plug. cutoff current 10mA, the adapter have no failures like damages, arch, insulation damage etc.

(AC3000V 1 分钟, 输入插头与 DC 插头之间感生电流 10mA 后无损伤、电弧放电、绝缘破坏等异常。)

6.3 Insulation Resistance (绝缘电阻)

I/P-O/P:500VDC / 100M Ohms

6.4 Leakage Current (泄露电流)

0.3mA maximum, at nominal AC input voltage and frequency

(额定交流输入时泄露电流不得超过 0.3mA)

6.5 EMC Standards (EMC 标准)

EN55022 and 55024;

7. Environmental Requirement

7.1 Operating Temperature (工作温度)

	深圳市宝捷源科技有限公司 ShenZhen Powerwat Technology Co.,LTD		REVISION	A
			DATE	Mar 3 rd .2015
Model No.	PW-4800250	Customer Model		

-0°C TO 40°C

7.2 Storage Temperature (储藏温度)

-20°C TO +70°C

7.3 Operating Humidity (工作湿度)

35~85% RH. Non-condensing

7.4 Storage Humidity (储藏湿度)

5 ~ 95% RH. Non-condensing

8. Mechanical Requirement (机械要求)

8.1 Dimension (尺寸)

167.0(L) * 63.0(W) *39.0(H) mm maximum

8.2 Weight (重量)

510g(REF)

9. Mechanical Characteristics (机械性能)

9.1 Appearance (外观)

Visual inspection the case have no visual abnormality, no obvious nick, burr and other mechanical damage, outer metal have no rust. Use limit sample to check for any failures.
(目视检查, 无外观异常, 表面无明显划痕、毛刺及其它机械损伤, 其它限度根据样品确认。)

10. Environmental Performances(环境性能)

10.1 Operating at the lower temperature (低温动作)

At $0 \pm 2^\circ$ C, with the rated voltage charged to the primary and full loaded on the secondary, no abnormality in electric and mechanical characteristic, after 2 hours recovery at the room temperature.

(在输入端施加额定电压输出端满载状态下, 试验后常温放置 2 小时, 无特性异常)

10.2 Operating at the higher temperature (高温动作)

At $40 \pm 2^\circ$ C, with the rated voltage charged to the primary and full loaded on the secondary. No abnormality in electric and mechanical characteristic after 2 hours recovery at the room temperature.

(在输入端施加额定电压且输出端满载状态下, 试验后常温放置 2 小时, 无特性异常)

	深圳市宝捷源科技有限公司 ShenZhen Powerwat Technology Co.,LTD		REVISION	A
			DATE	Mar 3 rd .2015
Model No.	PW-4800250	Customer Model		

10.3 Storage at the lower temperature(低温放置)

At $-20 \pm 2^{\circ} \text{C}$, test of non-operated, No abnormality in electric and mechanical characteristic after 2 hours recovery at the room temperature.

(在 $-20 \pm 2^{\circ} \text{C}$ 非动作状态下进行试验， 试验后常温放置 2 小时， 通电无特性异常)

10.4 Storage at the higher temperature (高温放置)

At $70 \pm 2^{\circ} \text{C}$, test of non-operated, No abnormality in electric and mechanical characteristic after 2 hours recovery at the room temperature.

(在 $70 \pm 2^{\circ} \text{C}$ 非动作状态下进行试验， 试验后常温放置 2 小时， 通电无特性异常)

10.5 Storage at high temperature and high humidity with the adaptor turned on. (高温高湿度放置)

At 40°C , 90~95%RH, operating at power supplied, no abnormality in electric and mechanical characteristic, after 2 hours recovery at the room temperature.

(在 40°C , 90~95%RH, 非工作状态下， 试验后常温放置 2 小时， 通电无特性异常)

10.6 Storage at low temperature and low humidity with the adaptor turned on.(低温低湿度放置)

At -20°C , 10%~40%RH, operating at power supplied, no abnormality in electric and mechanical characteristic, after 2 hours recovery at the room temperature.

(在 -20°C , 10%~40%RH, 非工作状态下， 试验后常温放置 2 小时， 通电无特性异常)

	深圳市宝捷源科技有限公司 ShenZhen Powerwat Technology Co.,LTD		REVISION	A
			DATE	Mar 3 rd .2015
Model No.	PW-4800250	Customer Model		

11. Drawing (外观图)



12. Packing Drawing (装箱图)

