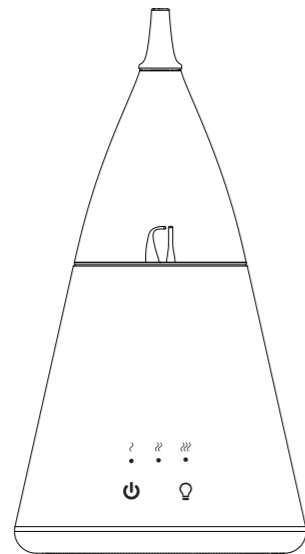
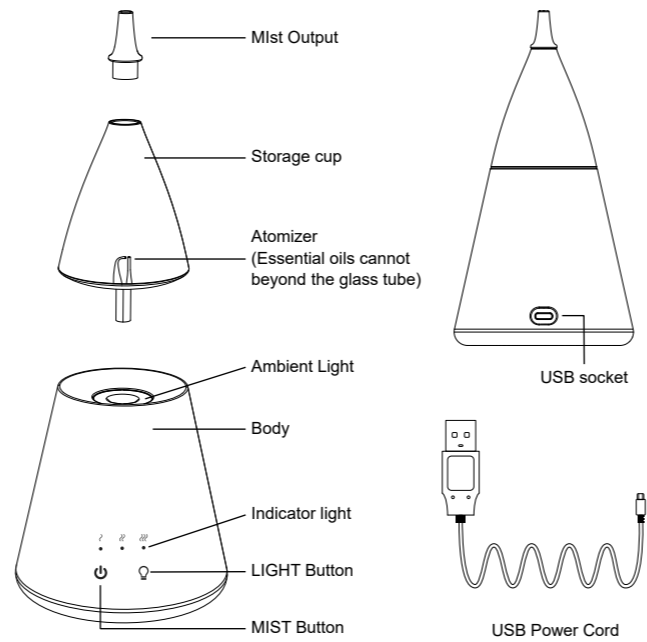


110*125mm 材质: 铜板纸

Scent Nebulizer User Manual



Part name



How to operate

A Operation

1. Install cup as figure 1
2. Connect power as figure 2
3. Drop oils in below max line as figure 3
4. Assembly as figure 4

B Fragrance and lights

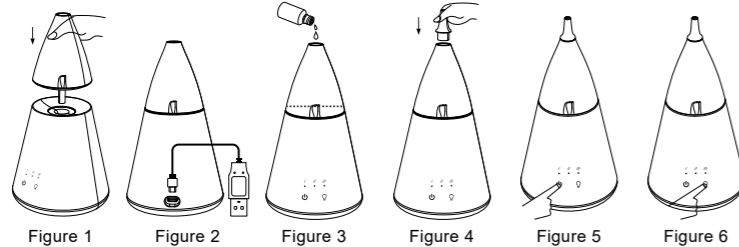
- In charging or battery fully charged, click for fragrance gears
1. Press and hold for two seconds "⏻", spraying 10s, stop 30s, lights brightness low, 2hr later auto-shut off.
 2. Again "⏻" spraying 30s, stop 60s, lights brightness low, 2hr later auto-shut off.
 3. Once again "⏻" spraying 60s stop 120s, lights brightness low, 2hr later auto-shut off.
 4. Turn off, long press for two seconds "⏻"
- Click for warm yellow lights
1. one "⏻" brightness low
 2. Again "⏻" brightness mid
 3. Once again "⏻" brightness high
 4. Turn off, click "⏻" again.
- When the machine is working, click "⏻" and "⏻" for fragrance gears and light brightness.

C Indication lights

- Working, solid green
In charging, off, breathing green, fully charged, solid green
Working and charging, warm yellow

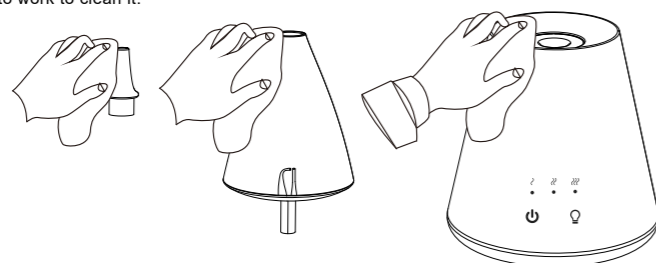
Battery power display:

1. When the battery voltage is lower than about 3.0V, the ambient light flashes quickly (2.5HZ) 5 times and then shuts down.



Maintenance

1. Clean the appearance of the machine with a damp cloth. Do not use other chemical detergent clean.
2. If you want to replace the flavour or not use it for a long time, add alcohol and water to work to clean it.



Precautions

1. Pay attention to the strength of the mist. Different kinds of oil, humidity, temperature and airstream in the door will affect the mist. It is normal when there is a little discrepancy.
2. This machine applies only to natural essential oils, if they contain chemical ingredients, spices or impurities may cause Damage to the machine.
3. Do not use wet hands to insert or unplug the power cord, could easily lead to electric shock.
4. Do not damage the power cord. A damaged power cord may cause a short circuit and open circuit, etc., easily lead to electric shock, Fire.
5. Do not puncture, twist, stretch it vigorously, not heavy pressing power cord, or put high temperature.
6. Do not exceed the amount of the value of using the socket and connected devices, the excess value may burn.
7. Do not disassemble, repair or seal of the machine for repair, please contact the sales office machines.
8. Do not heat, humidity, water, places to use, may be due to leakage, electric shock and cause an accident.
9. The machine should be placed on a flat surface, not on the carpets, rugs, or unstable places.
10. Do not use cleaners containing chlorine or maintenance of machinery and the acid component may produce toxic gas cleaner, A health hazard.
11. Avoid direct sunlight should be placed according to the exit, near the air conditioner, fan or heat.
12. Should be placed out of reach of children, and the right to teach children not to play with the machine.
13. This machine is not suitable for children and those who lack knowledge of product use.
14. Replace the oil before or knocked over another machine, please follow the maintenance instructions processing machines.

Cause Of Issue

Diffuser spray device is not working properly. Product appear as a fault, the user can perform the following maintenance:

The machine does not start	Make sure the battery has power?	The Type-C plug into the charging
	Make sure the power supply is connected?	Re-insert the Type-C plug
Spray or not spray abnormal	Do you run out of essential oil?	Readd essential oil

Specifications

Dimensions	(D)93.7x(H)175mm
Input / Output Power	Type-C 5V1A
Weight	338G
Power cord length	Solid wood/glass/PP
Power	30ML (essential oil must be lower than the glass atomizer)
Materials	2000mAh
Accessory	Power cord/instruction manual