

USM60

Features

- Piezoelectric Spinning Motor
- Low-Speed/High-Torque
- Fast response/Low Noise
- Self Locking/Lower Electromagnetic Radiation
- High Overload



Electrical Characteristics

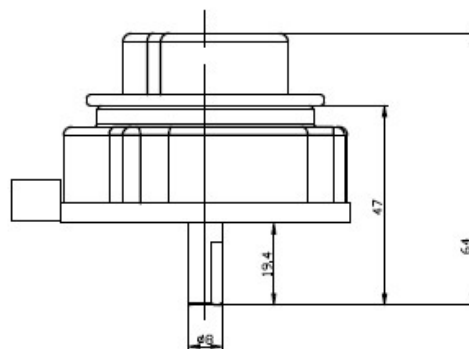
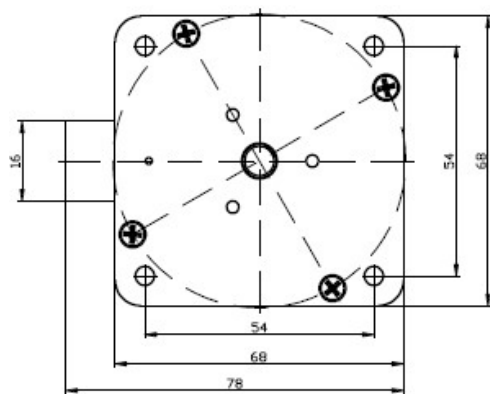
Operating Voltage	150 Vrms
Operating Frequency	41±2 KHz
Output Power	7 watt
Rated Speed	100 rpm
Max Speed	130 rpm
Starting Response	≤5 ms
Stopping Response	≤2 ms

Environmental Characteristics

Operating Temperature	-40 °C to +85 °C
Storage Temperature	-55 °C to +100 °C
Vibration	10 to 2000 Hz , 0.75mm/150m/s ²
Shock	Radial direction: 12000g Axial direction: 4000g

Mechanical Characteristics

Rated Torque	0.7 N.m
Holding Torque	≥1.2 N.m
Max Torque	1.1 N.m
Noise	≤35dB
Life	1500 hours



Outside figure of USM 60

Customized product is available. For more information please contact with us.