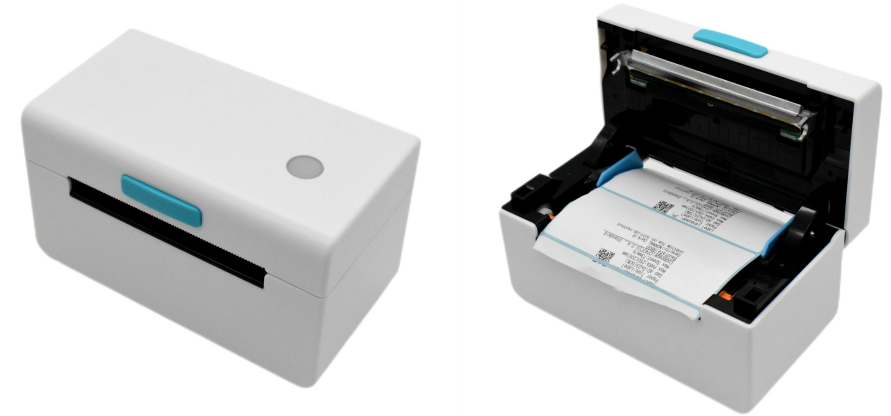


# Thermal Label printer series

Model: CP410

4 inch thermal label printer



Specification:	
Printing Method	Thermal printing
Printing Speed	150mm/s(max)
Resolution	203dpi,8dots/mm
Character Set	Support User-defined characters GB18030 24X24 ASCII 9X17,12X24
Graphics printing	support dots printing with different densities,support raster bitmap print,support downloaded bit image print
Code pages	support simplified&traditional Chinese ,English,Japanese and other 45 kinds of international character sets.
Barcode type	UPC-A;UPC-E;JAN13(EAN13);JAN8(EAN8);CODABAR; ITF;CODE39;CODE93;CODE128;QR CODE;
Interface	<b>USB/USB+Bluetooth</b>
Power	<b>DC 24V/2.5A</b>
Cashbox control	RJ11-6P6C Socket,24V
Work environment	Temperature: 0~45°C; Dampness:10~80%
Storage environment	Temperature: -10~60°C; Dampness:10~90%
Paper Width	25.4-108mm
printing width	108mm(MAX)
Paper cutting	manual
Dimension(L*W*H)	175mmx95mmx95mm
TPH life	100km
paper type	<b>thermal receipt/label paper</b>
Drivers:	Windows(WIN7/WIN8/WIN10/Vista/XP/2000) Ubuntu 12.04 32/64 Ubuntu 14.04 32/64 MAC OS
Printing command	Compatible with ESC/POS/JPL/TSPL/CPCL/EPL/ZPL command set

## Feature

- ★ Easy paper loding ,Exquisite design and easy to use
- ★ **Dedicated label editing software,design your own label format**
- ★ High speed、 high life、 high quality、 low repair rate, apply to all sorts of business software
- ★ **Without paper warehouse, paper roll holder optional, can support large diameter paper roll and folded paper**
- ★ Low noise,high-speed printing
- ★ Support paper end detection, seam detection, black label detection, open cover detection, and paper removal detection
- ★ **support thermal label/receipt printing**
- ★ Easy paper loading design, widely used in various industries

## Application:

- ◆ Food Industry
- ◆ Retail Supermarket
- ◆ Medical Industry
- ◆ Product Packaging
- ◆ Logistics Industry
- ◆ Manufacturing
- ◆ Warehousing