

# TWG3246-370

3246 dc worm gear motor with 370 motor

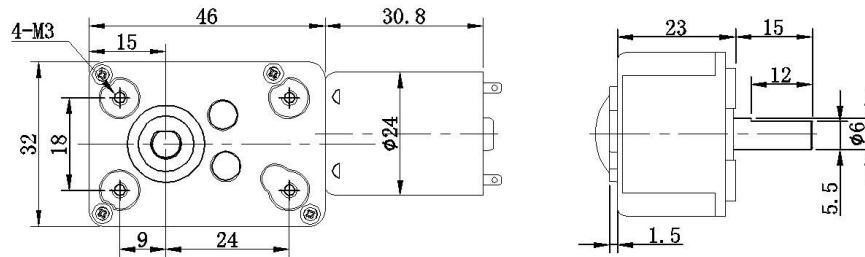
DC WORM GEAR MOTOR



## Characters:

1. Micro dc worm gear motor with low speed high torque. Max load up to 30kg.cm
2. EU environmental energy-saving requirement, min current up to 30mA
3. Military product requirement, super low noise, min to be 35dB
4. Match encoder, 3-16pps
5. Reduction Ratio: 146、188、300、438、563、700、900、1020、1313、1688、270

## Gear Motor Dimensions(mm)



## Motor Technical Data

| Type            | Rated voltage | No-load speed | No-load current | Rated speed | Rated torque | Rated current | Output power | Stall torque | Stall current |
|-----------------|---------------|---------------|-----------------|-------------|--------------|---------------|--------------|--------------|---------------|
|                 | VDC           | r/min         | mA              | r/min       | g.cm         | mA            | W            | g.cm         | A             |
| TRK-370CA-22170 | 6             | 5600          | 50              | 4800        | 24           | 300           | 1.18         | 186          | 2.1           |
| TRK-370CA-15360 | 12            | 5600          | 25              | 4800        | 24           | 160           | 1.18         | 186          | 1.06          |
| TRK-370CA-12560 | 12            | 3700          | 20              | 3000        | 20           | 90            | 0.62         | 125          | 0.46          |

## Gear motor Technical Data

**Gearbox with motor:** TWG3246-370-22170-XXX

|                                      |     |     |      |     |     |     |     |      |      |      |
|--------------------------------------|-----|-----|------|-----|-----|-----|-----|------|------|------|
| Reduction ratio                      | 146 | 188 | 300  | 438 | 563 | 700 | 900 | 1020 | 1313 | 1688 |
| Length mm                            | 46  | 46  | 46   | 46  | 46  | 46  | 46  | 46   | 46   | 46   |
| No-load speed rpm                    | 38  | 30  | 18.5 | 12  | 10  | 8   | 6   | 5    | 4    | 3    |
| Rated speed rpm                      | 32  | 25  | 16   | 10  | 8   | 6   | 5   | 4    | 3    | 2.5  |
| Rated torque kg.cm                   | 2   | 2.5 | 2.5  | 3   | 3.5 | 5   | 5   | 8    | 8    | 10   |
| Max.momentary tolerance torque kg.cm | 5   | 5   | 5    | 10  | 10  | 10  | 15  | 15   | 15   | 15   |

**Gearbox with motor:** TWG3246-370-15360-XXX

|                                      |     |     |     |     |     |     |     |      |      |      |
|--------------------------------------|-----|-----|-----|-----|-----|-----|-----|------|------|------|
| Reduction ratio                      | 146 | 188 | 300 | 438 | 563 | 700 | 900 | 1020 | 1313 | 1688 |
| Length mm                            | 46  | 46  | 46  | 46  | 46  | 46  | 46  | 46   | 46   | 46   |
| No-load speed rpm                    | 38  | 30  | 18  | 12  | 10  | 8   | 6   | 5    | 4    | 3    |
| Rated speed rpm                      | 32  | 25  | 16  | 10  | 8   | 7   | 5   | 4    | 3    | 2.5  |
| Rated torque kg.cm                   | 2   | 2.5 | 3   | 3   | 5   | 5   | 5   | 8    | 8    | 10   |
| Max.momentary tolerance torque kg.cm | 5   | 5   | 5   | 5   | 10  | 10  | 15  | 15   | 15   | 15   |

**Gearbox with motor:** TWG3246-370-12560-XXX

|                                      |     |     |     |     |     |     |     |      |      |      |
|--------------------------------------|-----|-----|-----|-----|-----|-----|-----|------|------|------|
| Reduction ratio                      | 146 | 188 | 300 | 438 | 563 | 700 | 900 | 1020 | 1313 | 1688 |
| Length mm                            | 46  | 46  | 46  | 46  | 46  | 46  | 46  | 46   | 46   | 46   |
| No-load speed rpm                    | 25  | 20  | 12  | 8.5 | 6.5 | 5   | 4   | 3.5  | 2.5  | 2    |
| Rated speed rpm                      | 20  | 16  | 10  | 6.5 | 5   | 4   | 3   | 3    | 2    | 1.5  |
| Rated torque kg.cm                   | 1.5 | 1.5 | 1.5 | 2   | 2   | 3   | 3   | 8    | 10   | 10   |
| Max.momentary tolerance torque kg.cm | 3   | 3   | 3   | 5   | 5   | 8   | 8   | 15   | 15   | 15   |