

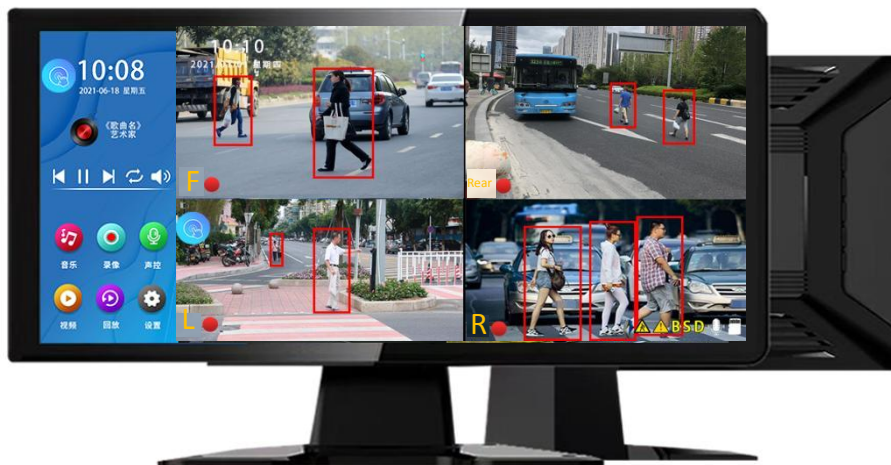
# **User Manual**

4CH Carplay Android Auto  
Car DVR BSD  
Monitor

# I Product Description



7"/-10.1" --BSD- Multimedia-MP5-Voice Control-Audio-Light Alarm



10.36"-4 CH-BSD- multimedia-MP5-sound-activated-sound and light alarm

Through 2-4 wide-angle cameras installed inside/outside of the car body, the real time images/videos around the vehicle can be transmitted and displayed to the all-in-one machine while playing songs. Drivers will be warned by red square frame and beep alarming when there is pedestrian in the vehicle blind spot. With this system, the occurrence of accidents, such as scratches, collisions, and falls can be effectively reduced. This product can record all driving pictures to avoid *scraping porcelain*.

## II Product Composition List

Name	Icon	Illustrate	Quantity
Monitor/ Host		10.1(1024*600) , 7(1024*600) or 10.36 HD display (1600*720)/4-way camera interface, left/right/rear turn signal, B+/GND/ACC power signal interface, integrated cable	1
Camera		AHD (720P /1080P optional ) / without LED light / aviation connector	2- 4
Camera Extension Cable A		Front left and right view / 3 meters / aviation connector / with shielding / with trigger wire	1-4
Camera Extension Cable B		Rear View / 15m / aviation connector / with shielding / with trigger wire	1 -2
Monitor Mount/Bracket		Multi-directional adjustment bracket, can be fixed by screws (optional)	1
Monitor Stand		Base bracket, can be fixed on the dashboard (optional)	1

### III Product Parameters

project	Function introduction	Performance
System	Operating language	Simplified/English /Traditional/Multilingual (optional)
	Operation interface	Graphical menu operation
	Operation method	touch
Video input	Video input	2/4 AHD HD video input 720P (default)/1080P/720N/1080N
	Video recording	default boot recording, no missing seconds, automatically return to the recording interface to perform recording if no operation is performed for 30s
	Video format	TS. 4-channel video saved separately, front (front) , back (rear), left (left), right (right), park (parking monitoring)
Video display	Real-time display	10.1 HD IPS screen, 1024*600; 10.36 HD IPS screen, 1 600*720
	Video display	Multi-view display mode /split screen mode
	Local playback	Play locally, view at any time , or select the playback button
	Screen protector	Can be set to 1 minute / 5 minutes / off

Trigger display	Trigger display	the large-screen viewing angle of the corresponding camera
Video storage	SD card	CLASS 10 U1 or above, minimum 64GB, maximum support 256GB
Audio section	Microphone	Support microphone recording, the menu can be set to close
	Voice control	Support voice control, a variety of voice control commands (Note: The voice control effect may be affected by noisy environment.)
Power section	Power input	working voltage is 24V , and it has power protection circuits such as vehicle-grade surge, overload, overvoltage, undervoltage, short circuit, etc. It is suitable for the power supply environment of various vehicles
Overall power consumption	Engine detection	ACC detection line
	2/ 4 channel video	Less than 10W (screen display, 2/ 4-way camera recording)
Other	Operating temperature	-20~65 degrees
	Cooling Method	Passive cooling
	Reversing line	Adjustable calibration manually _
	Video duration	Video recording time can be set
	Channel trigger delay	Turn signal delay can be set
	Screen mirroring/flipping	The four-way screen respectively supports mirror display, supports flip display, and the menu can be set

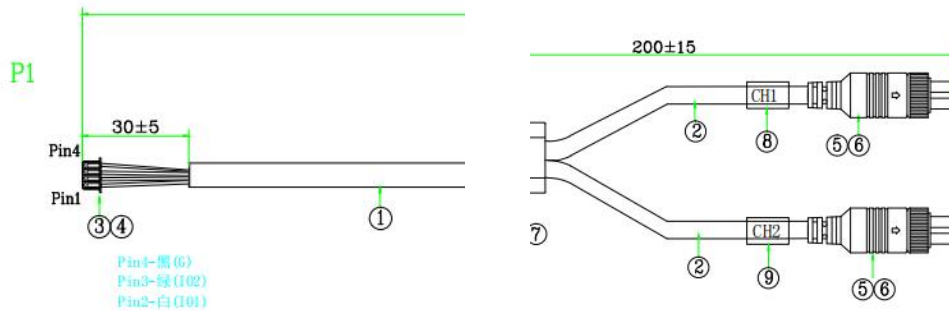
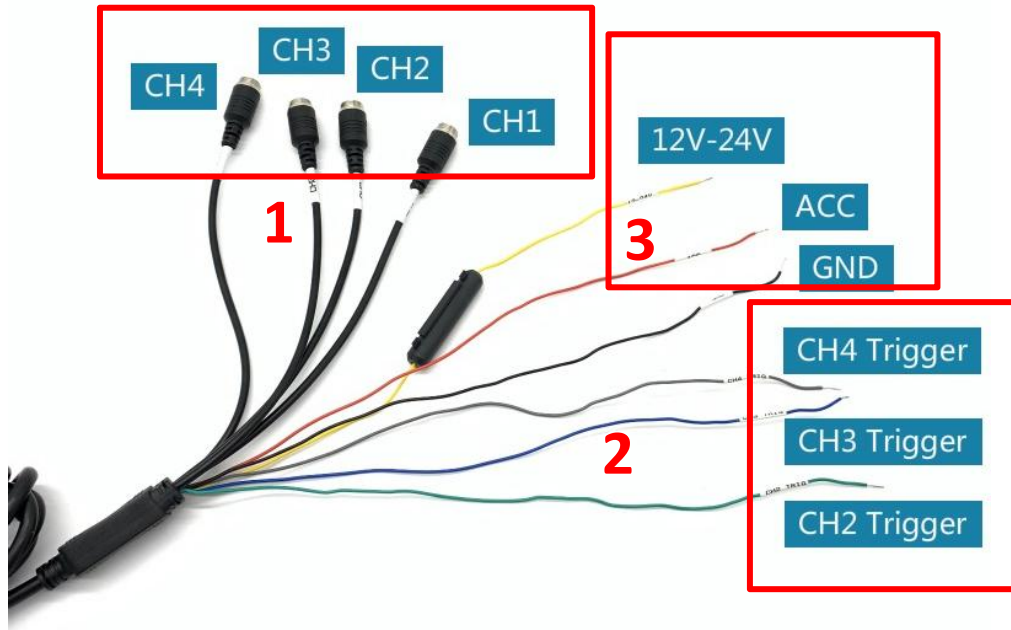
	License plate settings	support
	Time setting	support
	Parking monitoring	Can be set to off/1/2/5/10 hours
	Interface style	Multimedia/Concise mode optional
Active Safety Early Warning System	Pedestrian detection	Front (switch), rear (switch, reverse trigger switch)
		Left (switch, left turn trigger switch), Right (switch, right turn trigger switch)
	Pedestrian detection alarm	Off, 2 seconds, 4 seconds, 6 seconds optional
	AI intelligent anti-stealing oil	Off, left, right optional
	Audible alarm	Alarm 1: front, rear, left, right, 4 channels optional
Alarm 2: front, rear, left, right, 4 channels optional		

## IV SD card specification requirements

SD card has a great influence on the stability of the video recording. In order to record the video safely, please choose the SD card of big brands such as SanDisk, Kingston, Toshiba and Samsung. Speed certification must be at least Class10 / U 1



# V Wiring Instructions



Details are as follows:

Serial Number	Interface	Illustrate
1	2-4 cameras	Connect the camera according to the number on the line; CH1 (front); CH2 (rear); CH3 (left); CH4 (right); 5ch - Proactive USB720
2	3 trigger lines	Connect to 10~36V trigger signal source such as reversing/turn signal

3	Power cable	ACC/B+/GND; with fuse;
4	Audible alarm	2 CH1, 4 CH1/CH2
5	4 PIN terminal	Connect the motherboard power supply and sound and light IO

## VI Camera installation

Left and right cameras:

- 1、 Locate the drilling holes, find a suitable mounting position under the rear view mirror or crossbar, mark with a pen and drill the appropriate size screw holes.



- 2、 Remove the mounting plate and install it in reverse.



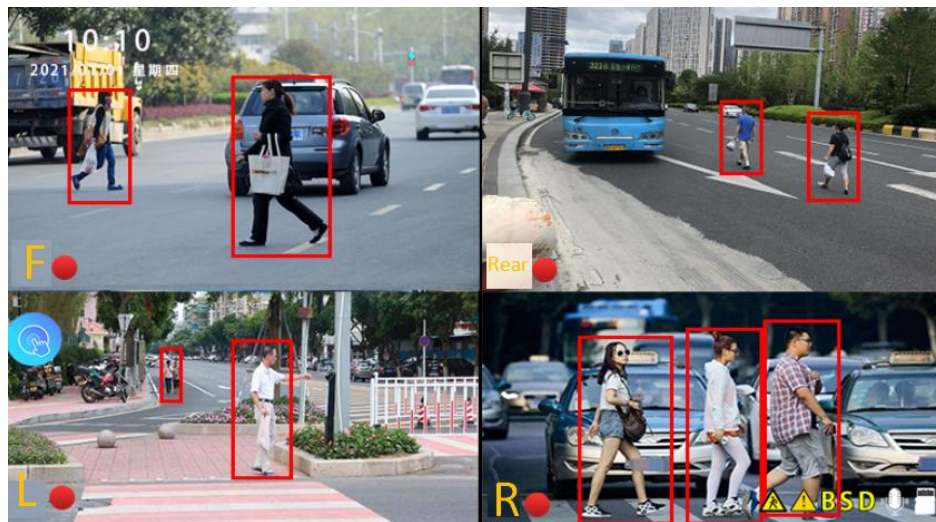
- 3、 Install it under the rear view mirror or cross bar, and tighten the screws of each part.

# VII Interface description

## Video main interface



7 inch/10.1 inch



10.36 inch

As picture shown above, the main page will display the images of four cameras. When an SD card is inserted, the system will automatically enter the recording mode. When recording, the red dot will flash. Blind spot detection and alarm will start to work and remind the driver in the car after the pedestrian detection is turned on.

## A. Playback

Long press V1/V2 to enter the playback interface (7 inch/10.1 inch /10.36 inch )

Enter the local video playback interface:



Select the video file to be played from the menu on the right to enter the video playback.

During playback, click the V1/V2 icon to enter/exit full-screen playback

## B. Voice Control

Support voice control , five-way voice command list: (10.1/10.36)

**Turn on the screen and turn off the screen.**


**Display left record Display right record Display side record Display main interfa**

## C. System Settings (7 inch/10.1/10.36)

Click MENU to enter the setting option and enter the system setting interface.

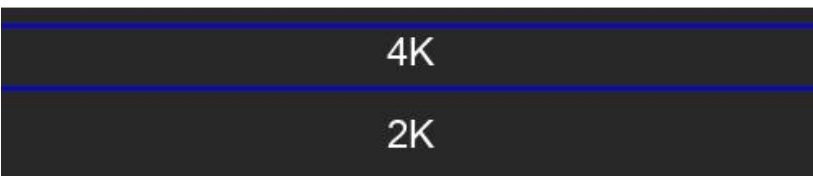
After entering the system setting interface, you can operate the following function

### 1. Video Resolution


Select  to enter the video resolution settings:

Resolution options: 2K/4K

System default 4K



## 2.Video Resolution


Select  the settings to enter the camera format:

Time can be selected: 720P/720N/1080P/1080N

System default 720P



## 3. Loop Recording

Select  the setting to enter the loop recording time:

Time to choose: 1 minute/3 minutes/5 minutes

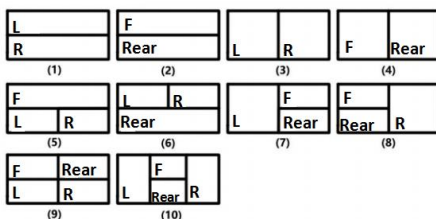
The system defaults to 1 minute

## 4. Split Screen Mode

Check  to enter settings:

The system defaults to split the screen into four

Split screen mode



1. Vertical bisection - front and rear
2. Horizontal bisection - front and rear
3. Vertical three-split screen
4. Horizontal three-split screen
5. Left three-point screen
6. Right three-point screen
7. The upper three-point screen
8. The lower three-point screen
9. Divide the screen equally
10. Center the quarter screen

## 5. Channel Settings



Check  to enter settings:

The system can perform "flip" and "mirror" operations for the front/rear/left/right cameras, respectively. Check the cameras you want to mirror, and confirm. This option allows customers to flexibly install the camera.

## 6. Channel Delay



Check  to enter settings:

The system can delay the delay change after the left, right and rear cameras are triggered. Selectable off, 1/3/5 seconds

The system defaults to 3 seconds

## 7. Parking Monitoring



Check  to enter settings:

After the vehicle is turned off, the machine can perform parking surveillance video, which can be switched off, 1/2/5/10/24 hours.


After this function is turned on, after the car is turned off (ACC is powered off), the system will continue to keep the video recording for the corresponding time.

The system is closed by default

**Note: This function cannot be used when the car battery is completely de-energized.**

## 8. Screen Brightness



Select  to enter settings: Select screen brightness: High, Medium, Low

## 9. License Plate Watermark and Time Watermark



Check to enter settings:

Enter the corresponding license plate number, for example: Guangdong A88888

Confirm the save settings, and the corresponding license plate number will be automatically displayed in the watermark of the video file.

Time watermark will also be in the video file watermark, selectable on/off

## 10. Screen Saver



Select "  " to enter settings:


Screen saver can be set to: off / 1 / 3 / 5 minutes

After setting 1 minute or 5 minutes, the screen will turn off automatically if the system does not operate for the corresponding time.

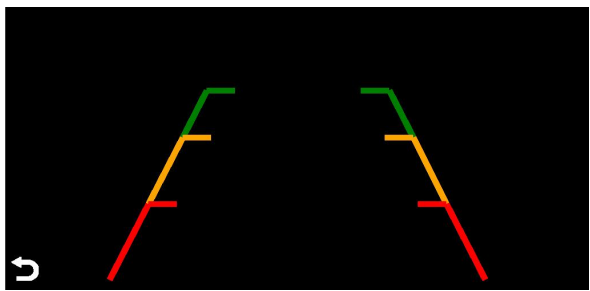
After entering the screen saver, press the power button again to turn on the screen. Default: off

## 11. Reversing Line Calibration



Select "  " to enter the setting: park the car in the middle of the parking space and click/long press "+-" to adjust the position of the reversing auxiliary line, so that the reversing

auxiliary line is horizontal to the parking line on the left side of the ground. After adjusting the reversing line, you can go back.



## 12. Voice

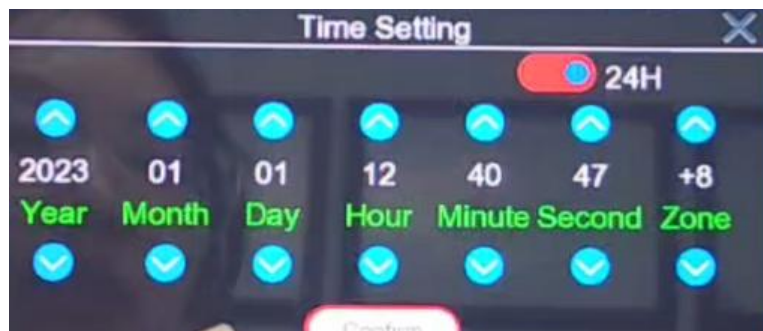


Select " " to enter the settings to select multiple languages such as Chinese/English/Traditional

## 13. Time Setting



Select " " to enter settings: set separately: year/month/day/hour/minute/second



## 14. Key Sound and Recording Sound



You can choose to close or open.

## 15. Voice Switch



You can choose to close or open. Show phonetic entries

## 16. Interface Style



Select " " to enter settings:

Optional multimedia mode/concise mode .

## 17. Pedestrian Detection



Select " " to enter pedestrian detection settings:

The pedestrian warning of the main engine in the vehicle can be controlled separately and independently, and the warning will be given when a pedestrian is detected when the vehicle is fully opened.

After turning on the steering trigger detection alone, the host/monitor will warn when a pedestrian is detected when reversing.

Turn on the left turn trigger detection separately, and the host will warn when a pedestrian is detected when turning left.

If the right turn trigger detection is turned on separately, the host will warn when a pedestrian is detected when turning right.

It does not affect the steering of the sound and light alarm to remind pedestrians outside the car, and can be controlled separately and independently!

## 18. Pedestrian Detection Alarm



Select " " to enter the pedestrian detection alarm setting:

Optional off, 2/4/6 seconds.

## 19. AI Intelligent Anti-stealing Oil



Select " " to enter anti-oil stealing settings:

Optional off, left, right

Make sure the parking monitor mode is turned on when monitor is powered. The device will enter parking monitor mode when the vehicle is turned off, and the camera corresponding to the fuel tank will keep working. When it detects that someone stays near the mailbox for up to 30 seconds, the monitor enters the anti-fuel stealing mode, and broadcasts a voice "there is someone near the fuel tank" to remind the driver in the car, and save the video as parking video evidence.

## 20. Sound and Light Alarm



Select " " to enter the sound and light alarm setting:

Sound and light alarm 1: front-rear-left-right

Sound and light alarm 2: front-rear-left-right

After turning on the corresponding option of the sound and light alarm, even if the pedestrian detection is turned off, the vehicle can turn left and right and then the vehicle can be reminded outside the vehicle.

## 21. Format



Select " " to enter settings:

This option will format all data information of the inserted TF memory card. It is recommended to format manually when inserting the TF memory card for the first time to ensure sufficient capacity of the card.

**Note:** It is recommended that users regularly format the TF memory card manually.

## 22. Restore Factory Settings



Select " " to enter settings:

Restore factory settings, the system will restore all settings to the original state

## 23. Version Information



Select " " to enter the menu:

This option can see the current basic version, which is convenient for viewing version information

## **Button function definition:**

**0.MENU 1.V1/V2(MODE) 2.— 3.OK(M) 4.+ 5.POWER(7inch/10.1)**

**1.MODE 2.UP 3.POWER 4.DOWN 5.OK(10.36)**

Click the POWER key: turn on/off the screen; after disconnecting the ACC, long press the POWER key: turn on/off

Reset key: Click to force restart

### **Main interface:**

Click the MODE button to switch between front, rear, left, right and four-split screen

Click UP/DOWN/-/+ to select the upper and lower menus

Long press UP/DOWN/-/+ to adjust volume +/-

OK button to confirm

Click MENU to enter the setting interface (10.1)

Long press the V1/V2(MODE) button to enter the playback view. (10.36)

### **Playback interface:**

Click the V1/V2(MODE) button to zoom in/out the playback video

Click OK to start/pause playback of the video

Click UP/DOWN/-/+ to play up and down the video and select it

Long press UP/DOWN/-/+ to adjust volume +/-

Long press the OK button to switch between normal video and parking monitoring video list

Long press the MODE button to return to the main interface (10.36)

Click the MENU button to return to the main interface (10.1)

## **Set interface:**

Reverse line calibration: Click V1/V2 (MODE) button to select cursor, click UP/DOWN/-/+ to move left and right cursor, long press UP/DOWN/-/+ to move up and down cursor

The primary/secondary menu of all setting interfaces can be returned to by long pressing the MODE button

Long press the MODE button to return to the main interface (10.36)

## **Sound and light alarm interface:**

+ - Perform left and right operations, M/OK to select and unselect, MUNE key to return to the previous layer, long press V1/V2/MODE to return