

POCKET FETAL DOPPLER

100F



Alert
Function



FHR



Clinically
Tested



Hifi
Speaker



From
16th Week

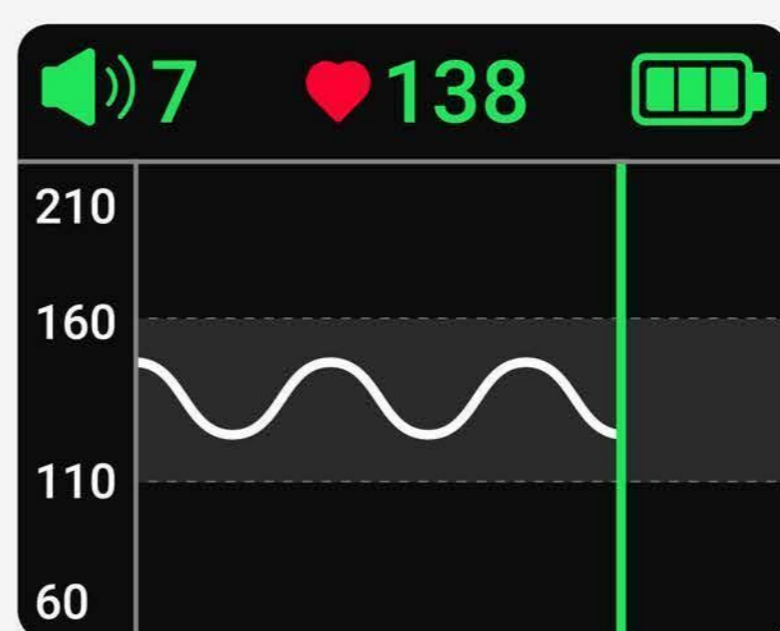


TFT
Screen

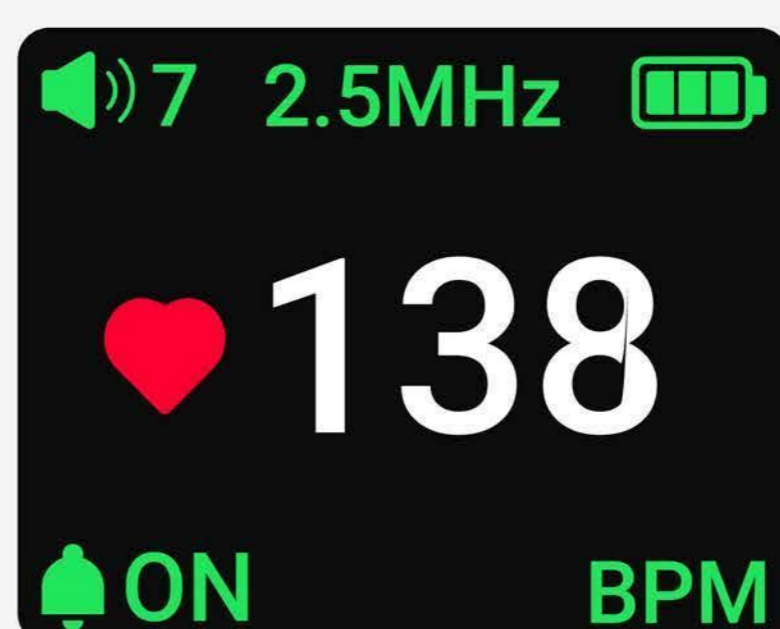
HEAR THE BABY'S HEARTBEAT

JPD-100F is a hand-held fetal heart rate detecting device.

It displays fetal heart rate on TFT screen with easy and convenient operation, which can be used in hospital, clinic and home for daily self-check.

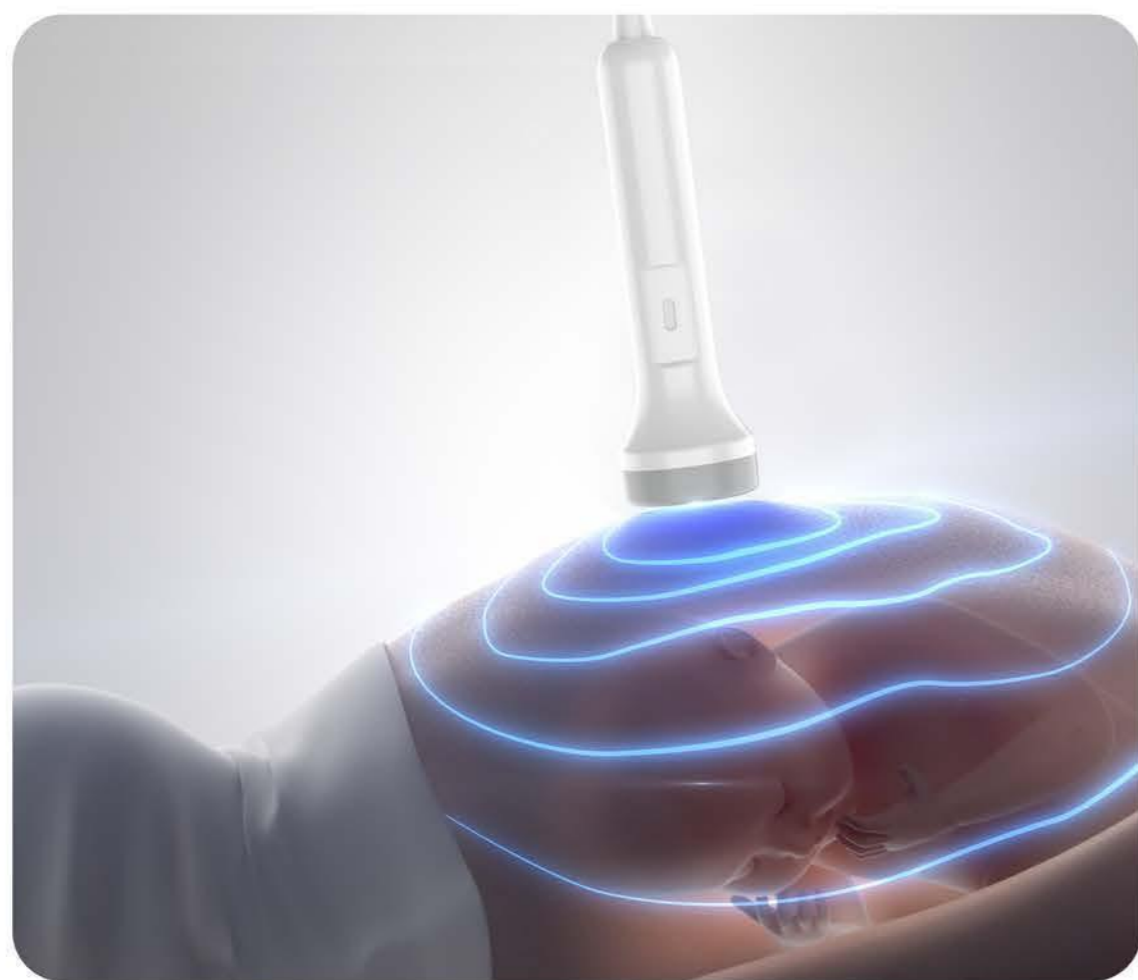


1 Curve mode



2 Value mode

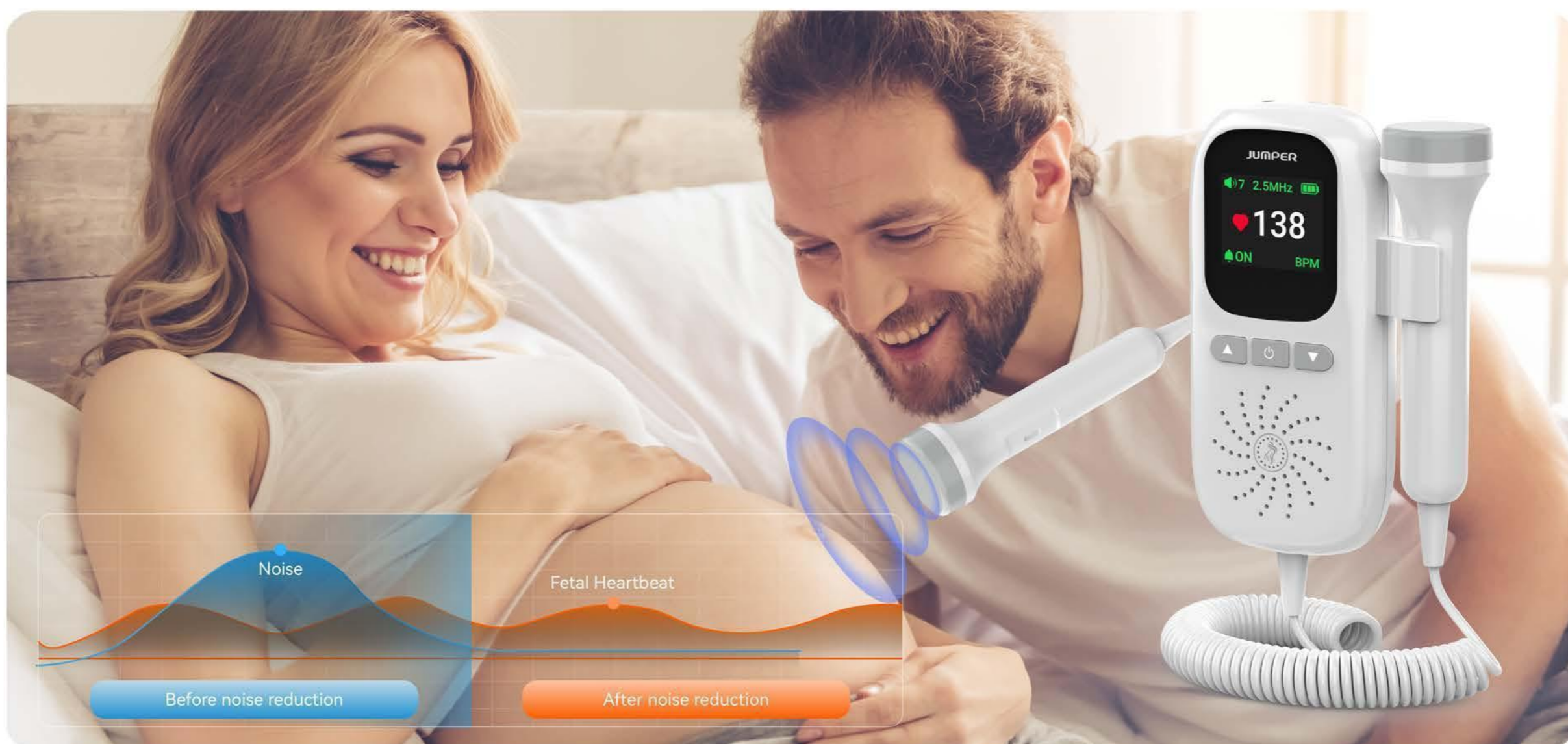
HIGH SENSITIVITY 2.5MHZ PROBE



ABNORMAL FETAL HEART RATE REMINDER



INTELLIGENT NOISE REDUCTION



SPECIFICATIONS

DISPLAY

TFT

ULTRASOUND FREQUENCY

2.5 MHz

BATTERY

**3.7 V Lithium
(RECHARGEABLE)**

NET WEIGHT

**250 ± 5 g
(WITHOUT BATTERY)**

DIMENSIONS(mm)

139 x 82 x 28

FHR MEASUREMENT RANGE

50-210 ± 2 BPM

PERFORMANCE

**BATTERY STATUS
WAVE FORM
FHR VALUE
FHR MODE
VOLUME**

MEASURING MODE

REAL-TIME

FUNCTION

ADJUSTABLE VOLUME

PACKAGING



ACCESSORIES

USB CABLE X 1

USER MANUAL X 1

QUICK GUIDE X 1

CTN SIZE(CM)

38 x 35 x 29

QTY/CTN

20

GW(KG)

7

FCL/20

360