

产 品 规 格 书 TECHNICAL SPECIFICATION

1.简介/About

碱性电池 Alkaline battery 型

号 Model# : LR6 /AA

Dimensions:

A:1.5-1.7mm	C:13.8-14.3mm
B:50.0-50.4mm	D:0.5-0.8mm

化学结构 Chemical System: Zn/KOH—H₂O/MnO₂

标称电压 Nominal voltage: 1.5V

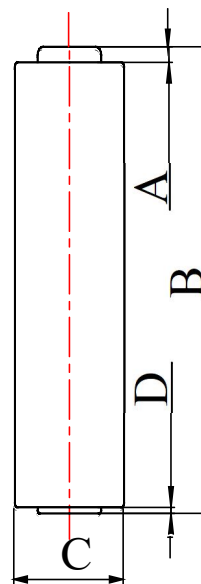
平均重量 Average weight: 22±0.5g

商 标: 仿金属铝膜 Jacket: Foil Label

参考标准 Reference document: IEC60086-2: 2007, IEC60086-1: 2007, GB/T8897.1;2-2008

重金属含量 Heavy Metal Contents:

Hg	Cd	Pb
<1 ppm	<20 ppm	<40 ppm



2.额定值/Rating

额定电压/Nominal Voltage		1.5V
使用温度范围 Temperature Range for operation	标准温度 Standard Temperature	20℃±2℃
	专用温度 Special Temperature	30℃±2℃
	高温 High temperature	45℃±2℃
相对湿度范围 Humidity Range for Storage	标准相对湿度 Standard Humidity	45%~75%
	专用相对湿度 Special Humidity	35%~65%
尺寸 Dimension	直径/Diameter	LR6:13.80~14.30mm
	高度/Height	LR6:50.2±0.2 mm
近似重量/Approx weight		LR6:21.5~22.5g

3. 电性能/Electrical Characteristic

(条件:负载电阻 3.9 Ω,精度±0.5%, 测量时间:0.3S,测量温度: 20℃±2℃。收货后 30 天内测试)

(condition: on-load resistance 3.9 Ω ,precision±0.5%,time:0.3S, temperature: 20℃±2℃。

Testing should be done within 30days upon the receipt of goods.)

	空载电压 /Off-load Voltage(V)	负载电压 /On-load Voltage(V)	瞬间电流 /Instance current(A)
新电/fresh Battery	1.620	1.500	14.0
室温存储 12 个月/stored for 12 months under Room Temp	1.590	1.450	10.0

4. 放电性能/ Discharge Characteristic

(条件:测量温度:20℃±2℃。收货后 30 天内测试。)

(condition: temperature: 20℃±2℃. Testing should be done within 30days upon the receipt of goods)

参考 标准 /refere nce standa rd	放电条件/Discharge condition			最少平均放电时间/Minimum average Discharge time	
	放电负载/ on-load resistance	每天放电时间 /Discharge time per day	终止电 压 /end Voltage(V)	新电池/fresh Battery	室温存储 12 个月 /stored for 12 months under Room Temp
	3.9 Ω	1h/d	0.8V	≥350min	≥320min
	1000mA	10s/min, 1h/d	0.9V	≥350 次 cycles	≥300 次 cycles
	3.9 Ω	24h/d	0.9V	≥330 min	≥310min
	10 Ω	24h/d	0.9V	≥16h	≥15h
	43 Ω	4h/d	0.9V	≥60h	≥56h
	1.5W/2S,0.65W/28S, ,重复 10 次停 55MIN		1.05V	≥50 次 cycles	≥40 次 cycles

容量: 2000mAH (标准温度下 25mA 恒流放电至 0.8V)

Capacitance: 2000mAH (S.T. 25mA constant-current discharge to 0.8 V)

(验收标准: 每一种放电条件取 9 只电池进行放电。平均放电时间等于或大于规定值, 而且放电时间少于规定值的 80%的电池数不大于 1, 则认为电池的放电时间符合要求。)

(Inspect standard: discharge 9 sample-batteries for each condition. It passes when average discharge time is no less than Rated Time and the quantity of the batteries which the value is under 80% of Rated Value is no more than one)

5. 耐漏液性能/Anti-leakage characteristic

项目/Item	条件/Condition	期限/Period	特性/Characteristic	验收标准/Inspect standard
过放电耐漏性能 Anti-leakage Feature of over-discharge	连续放电, 温度: 20℃ ± 2℃ 相对 65 ± 20RH on-load: 10 Ω temp: 20℃ ± 2℃。 Huml: 65 ± 20RH	连续放电 0.6V Uninterrupted discharge for 0.6V	电池变形不超出电池尺寸的上限或没有可见漏液情况。 Deformation is less than 0.2mm and no visual leakage	N=30, AC=0, Re=1
储存期耐漏性能 feature of storage	温度: 60℃ ± 2℃ 相对 湿度: 低于 90%RH temp 60℃ ± 2℃ Huml: ≤ 90%RH	20 天/20 days		N=30, AC=0, Re=1

6. 安全性能/Safety

项目/Item	条件/Condition	期限/Period	特性/Characteristic	验收标准/Inspect standard
短路性能 /anti-short-circuit	温度/Temp: 20℃ ± 2℃	24 小时/24hours	电池没有爆炸 /no explosion	N=9, Ac=0, Re=1

7. 标记/Marks:

在电池外标明以下内容:/ The following marks will be printed or stamped on the batteries's body::

- (1) 型号:/Model
- (2) 标称电压/Nominal Voltage
- (3) 极性/pole
- (4) 警告/Warning
- (5) 生产日期/到有效期日期 (附电池标版) Manufactured Date /Exp date

8. 电池存放期/ Storage life

于常温及合适环境可储存 5 年/Under room temp & suitable environment, its shelf time is 5 years.