

HS-H26 Overview

Product Features:

- 1. Smart chips that provide perfect protection when charging your device.
- 2. Simple and stylish; change your socket to a charger just one step.
- 3. Stable and safe for fast charging.

HS-H26C



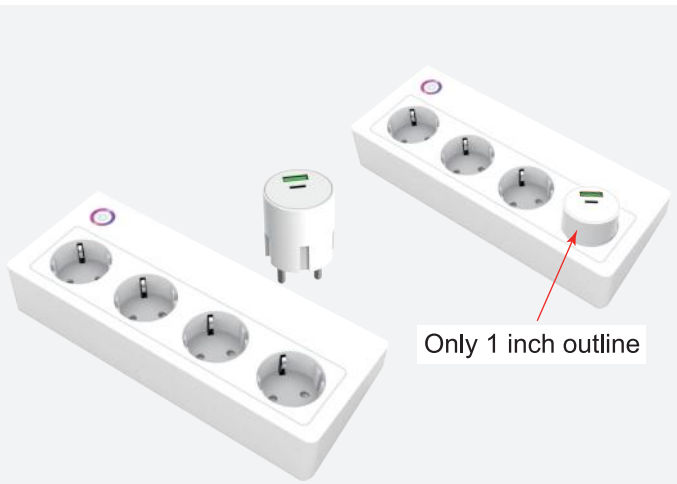
HS-H26CC



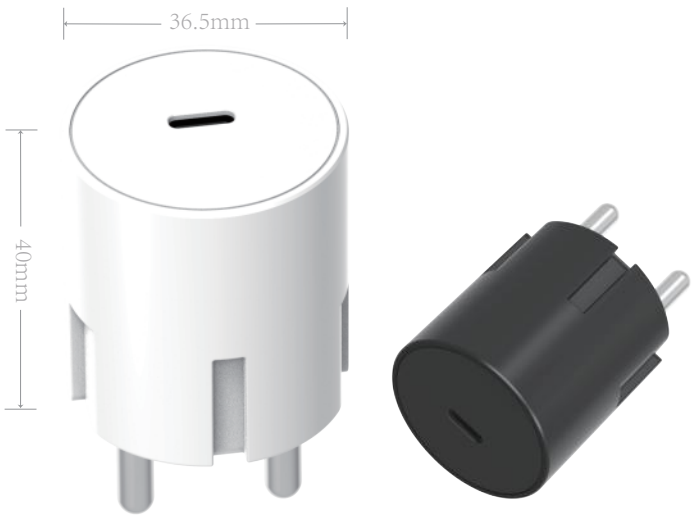
HS-H26AC



Size: 36.5*36.5*40mm



Single C port



Model: **HS-H26C-20W**

- Input: 110-240V~50/60Hz 0.6A MAX
- Output: DC PD 5V/3A,9V/2.22A, 12V/1.67A 20W(MAX)

Model: **HS-H26C-30W**

- Input: 110-240V~50/60Hz 0.8A MAX
- Output: DC USB-C PD3.0(5V/3A,9V/3A,12V/2.5A,15V/2A,20V/1.5A) 30W MAX
- Single PD Port GaN Chipset
- CE RoHS ERP VI

Double C port



Model: **HS-H26CC-20W**

- Input: 110-240V~50/60Hz 0.6A MAX
- Output: DC USB-C1 PD3.0(5V/3A,9V/2.22A, 12V/1.67A) or USB-C2 PD3.0(5V/3A,9V/2.22A,12V/1.67A) or USB-C1+USB-C2 (5V/3A) 20W MAX
- Double C Port GaN Chipset
- CE RoHS ERP VI

Model: **HS-H26CC-30W**

- Input: 110-240V~50/60Hz 0.8A MAX
- Output: DC USB-C1 PD3.0(5V/3A,9V/3A, 12V/2.5A,15V/2.0A,20V/1.5) or USB-C2 PD3.0 (5V/3A,9V/ 3A,12V/2.5A,15V/2A,20V/1.5A) or USB-C1 +USB-C2 (5V/3A) 30W MAX
- Double C Port GaN Chipset
- CE RoHS ERP VI

A+C port



Model: **HS-H26AC-20W**

- Input: 110-240V~50/60Hz 0.6A MAX
- Output: DC USB-A QC3.0(5V/3A, 9V/2A,12V/1.5A) or USB-C PD 20W(5V/3A,9V/2.22A, 12V/1.67A) or USB-A+C 5V/3A 20W(MAX)
- A+C Port GaN Chipset
- CE RoHS ERP VI

Model: **HS-H26AC-30W**

- Input: 110-240V~50/60Hz 0.8A MAX
- Output: DC USB-A QC3.0(5V/3A,9V/2A, 12V/2.5A,20V/1.5) or USB-C PD3.0(5V/3A, 9V/3A,12V/2.5A,15V/2A,20V/1.5A) or USB-A +USB-C (5V/3A) 30W MAX
- A+C Port GaN Chipset
- CE RoHS ERP VI