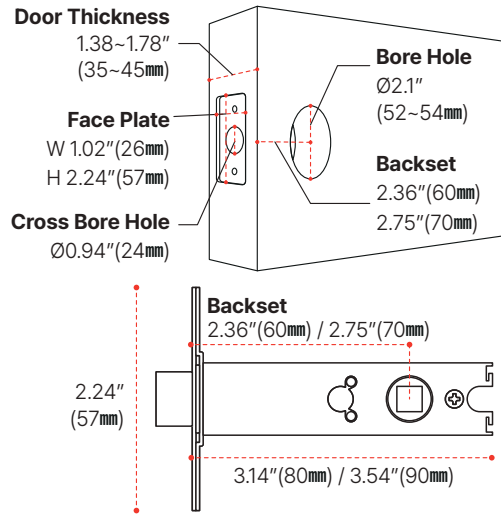
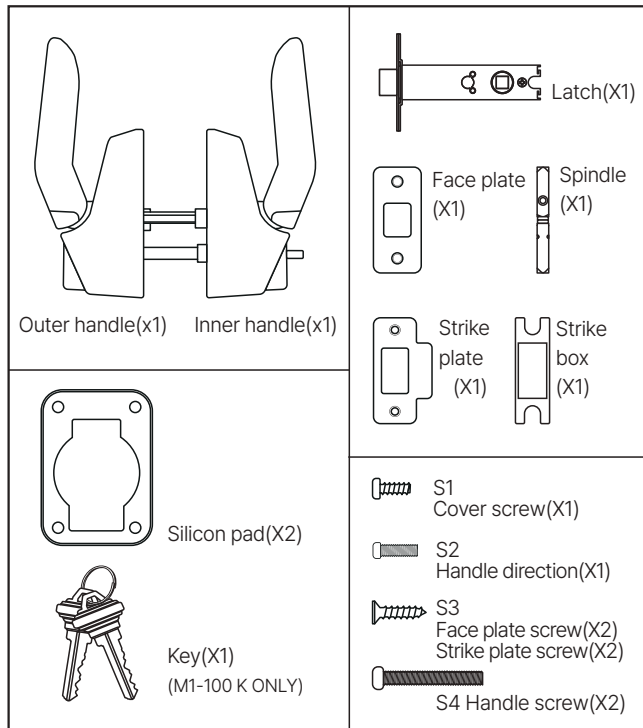


Installation Specifications



***Additional Tools** : Screwdriver(You are recommended to use a manual Philips head screw driver rather than an electric screwdriver.)

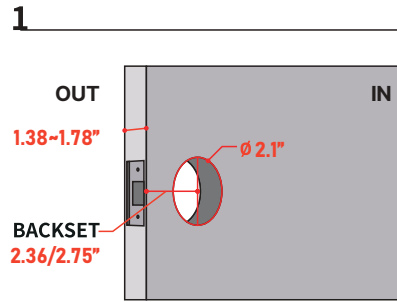
Components



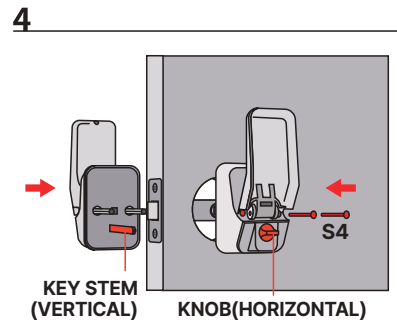
MILDA PUSH PULL DOOR LOCK [ARI] M1-100K(Key) / M1-100C(Coin)

Please be sure to read the user manual before installing or using the product for preventing any problems or damage to the product while using.

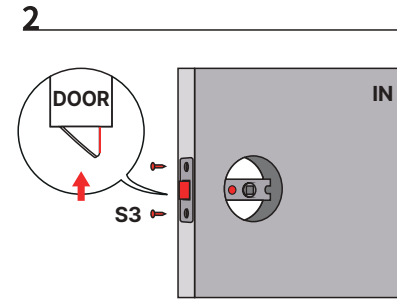
Installation specifications | •Thickness : 1.38"~1.78" •Backset : 2.36" / 2.75" •Bore hole : 2.1"



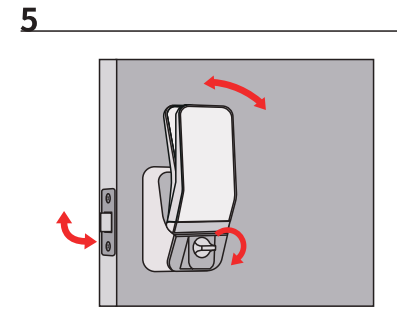
- Check installation specifications.
- Check the door opening direction.
 - The handle with a key should be outdoors, that with a knob should be indoors
 - Check the door opening direction and the position of the handle.
- Depending on door conditions(made of ABS, old doors, warped doors, hinge conditions), caution is required when installing.



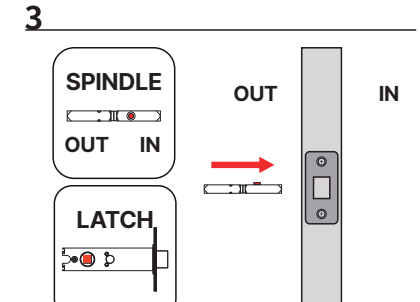
- The key stem of the outer handle should be vertical, and the knob of the inner handle should be horizontal.
- Fasten to the latch in order of outer handle and inner handle.
- Tighten the S4(X2) screw about 2/3 then check the handle angle to make sure it is level with the door and tighten the screw to the end.



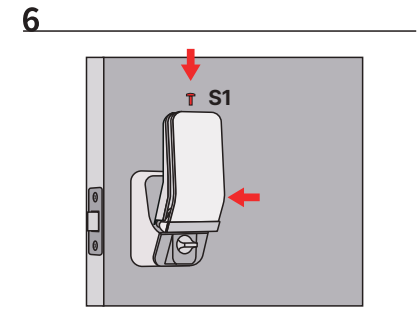
- When inserting a latch into a door (Caution is required about installation orientation.)
 - The vertical side of latch bolt is to face indoor and the sloped side is to face outdoor.
 - If the orientation of the body is different from that of the bolt, pull the latch bolt to rotate.
- Secure with S3 Screws(X2)



- Check operation before putting the cover.
 - With the handle pushed or pulled, hold the latch bolt with the other hand and push or pull the latch bolt to ensure that it is bent.
 - Lock the knob on the inner handle and pull the handle to check if lock is released.
- (Anti-panic function)**
- Using the key/coin of the external handle, check if the locking mechanism works.



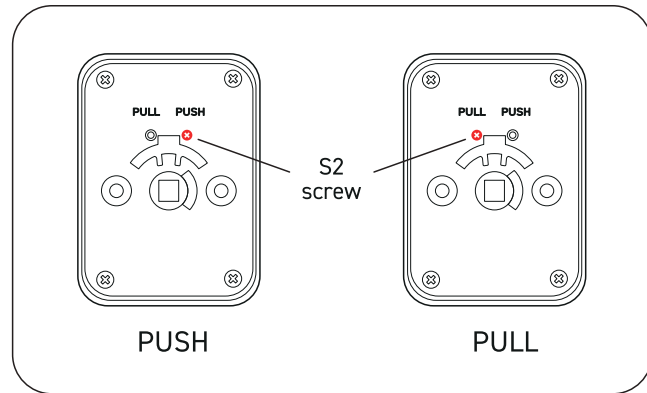
- Insert the spindle into the latch in the direction from outdoor to indoor
- Insert so that the protruded side of the spindle may pass through the latch first.)
 - Door lock gets inoperative when inserted in the wrong direction.



- Put the cover to the inner handle and secure with S1(X1) screw.
- [TIP]** External handle is shipped as a finished product with the cover assembled, but for the M1-100K key product, there is no risk of key loss and storage is convenient if the key is stored in a zipper bag(for noise prevention) in an empty space after separating the cover.]

Guidance to set the direction of the door lock

When delivering from the factory, the outer handle is set to push and the inner handle is set to pull. If you do not set the direction, the door may not close properly. Make sure to set it accordingly to the direction of the door of the house before using it. Set the screw on PUSH for push-open side and on PULL for pull-open side.



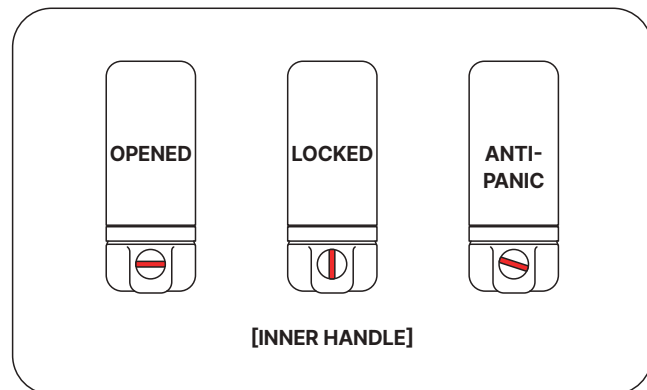
PUSH-OPEN



PULL-OPEN

Anti-panic

After using the anti-panic function, fully release the knob open to prevent any possible locking accident.

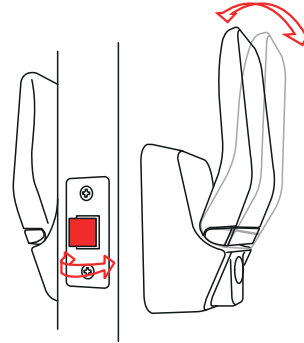


[INNER HANDLE]



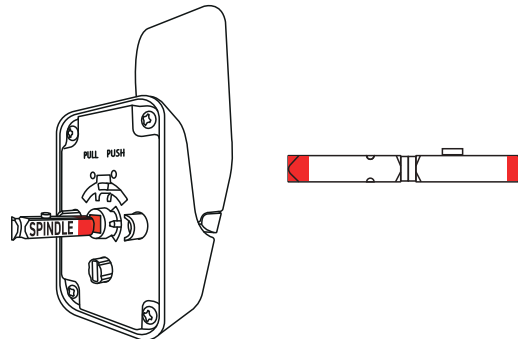
PRECAUTIONS

1. Precautions in Installation



① Test of Normal Operation : When the handle is pulled or pushed, the latch bolt is connected so that it may not enter or deflect inside the door.

With the handle pulled or pushed, make sure that the the latch bolt is bent normally by pushing or pulling it with the other hand. If the latch bolt does not bent, you have to make sure that the spindle and the handle are connected properly. Check for normal opeartion before closing the door: If the latch bolt does not operate properly, disassemble again and assemble the latch with the body.



② Both the handle and the spindle must be engaged for normal operation

2. Cautions in Use

- ① Due to door and door frame deformation, installation and operation may not be well done as intended.
- ② If you install it by force, the product may be damaged. You may be locked in a room due to incorrect construction or product defects. Make sure to move the handle to test the operation before closing the door after installing the product. Please carry your cell phone just in case when you close the door.
- ③ When returning or exchanging the product, you must enclose the entire contents as then were delivered for processing without any issue.

Exchange and Refund

Product exchange, refund, and repair are to be carried out in accordance with the Consumer Damage Compensation Regulations. The warranty period is one year from the date of purchase.

Warranty Repair Standards

When any performance defects or product failure occurs within the warranty period.

Paid Repair Standards

When any problem occurs in terms of use of the product after the warranty period. However, in the following cases, the repair will not be made free of charge even within the warranty period and will be charged to the customer.

- ① Failure to comply with the installation instruction and precautions set forth in this User's Manual.
- ② Damage or failure due to abnormal use or carelessness by the user (arbitrary repair, modification, disassembly, etc.)
- ③ Damage and failure due to external impact.
- ④ In the case of damage caused by a natural disaster
- ⑤ When the warranty period has passed.

Exchange and Refund

Exchange

- ① Shipping cost borne by Anylock: Exchange with the same product within 15 days from the date of purchase if a product is defective.
- ② Shipping cost borne by customer: If customer wants to change the color, key-coin, etc. within 15 days from the date of purchase.

Refund

- ① Shipping cost borne by Anylock: When any product defect occurs within 30 days from the date of purchase.
- ② Shipping cost borne by customer: When the customer simply changes mind within 10 days of purchase and there is no damage to the box packaging. Refund after deducting shipping cost.

Specifications

Model	M1-100K(Key type) / M1-100C(Coin type)
Body Size	2.67" X 5.90" X 2.44"
Latch	2.20" X 3.14" X 0.86" / 2.20" X 3.54" X 0.86"
Weight	850g
Material	Aluminum Alloy, Steel, Stainless Steel
Colors	White, Metal silver, Dark Grey, Black Black pearl, Matt pearl, Matt gold, Matt black, Chrome, Silver satin, Nickel satin, Brass satin, Antique Silver, Antique gold, Antique red
Manufacturer	Anylock Co., Ltd
Country	Republic of Korea(South Korea)

Company

Anylock Co., Ltd

T. 82-10-6556-3645

F. 82-32-232-3645

E. hi.anylock@gmail.com

H. anylock.kr