

## KKP系列快速排气阀 KKP Series Quick Exhaust Valve



### 特点 Feature

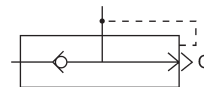
本系列产品是单向型方向控制元件，可将系统中工作过的气体直接排向外界，故称快速排气阀。配置在气缸和换向阀之间使用，使气缸内的空气不通过换向阀直接排出。

This series products are a one-way directional control element.can escape directly operation gas in the system.so call quick exhaust valve. It is installed between the air cylinder and change valve,making the air in the cylinder escape directly through this valvem not through change valve.

### 订购码 Ordering Code

<b>KKP</b>	-	<b>L15</b>
系列代号 Series Code KKP系列快速排气阀 KKP Series Quick Exhaust Valve		接管口径/Joint Pipe Code L6: G1/8"    L8: G1/4" L10: G3/8"    L15: G1/2" L20: G3/4"    L25: G1" L32: G1 1/4"    L40: G1 1/2" L50: G2"

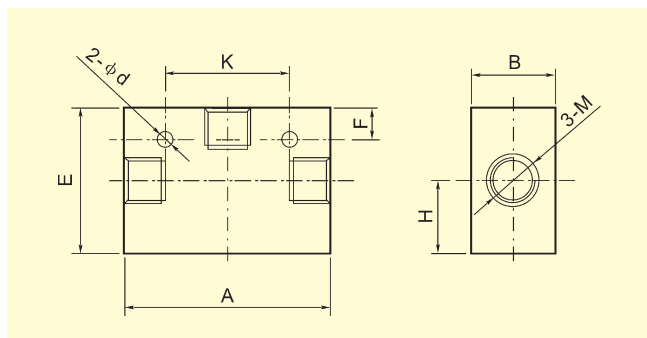
### 图形符号 Graphic Symbol



### 规格 Specification

型号 Model		KKP-L6	KKP-L8	KKP-L10	KKP-L15	KKP-L20	KKP-L25	KKP-L32	KKP-L40	KKP-L50
截面积 Section Area	P→A	10	20	40	60	110	190	300	400	650
	A→□	20	40	60	110	190	300	400	650	900
泄漏量 (cm <sup>3</sup> /min) Leak Out Flow		≤10		≤25		≤50		≤70		
使用介质 Working Medium		压缩空气 / Compress Air								
工作温度 Operating Temperature		-5 ~ 60℃								
工作压力 Working-pressure		0.05 ~ 1.2MPa								

### 外形尺寸 Overall Dimension



### 尺寸表 Dimension Sheet

型号 / 符号 Model / Symbol	M	A	K	B	E	H	F	d
KKP-L6	G1/8	75	-	36	41	10	-	-
KKP-L8	G1/4							
KKP-L10	G3/8	82	58	44	60	23	8	7
KKP-L15	G1/2							
KKP-L20	G3/4	128	98	72	95	36	8	10
KKP-L25	G1							
KKP-L32	G1 1/4	158	126	88	112	44	10	10
KKP-L40	G1 1/2							
KKP-L50	G2	190	148	102	130	52	10	12