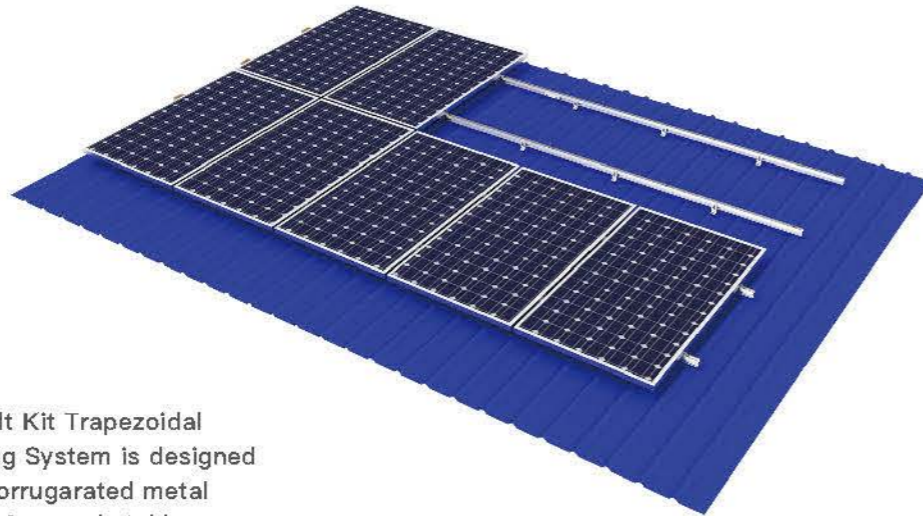


AS L Feet and Hanger Bolt Kit Trapezoidal Metal Roof Solar Mounting System



AS L Feet and Hanger Bolt Kit Trapezoidal Metal Roof Solar Mounting System is designed for solar installation on corrugated metal roof. The system delivers firm and stable fixation between metal roof and solar panels.

Advantages

- ◆ Simple and strong design.
- ◆ Compatible to most framed and frameless solar panels.
- ◆ Pre-assembled before shipment, saving on-site installation time and labor cost.

Specification

Product	AS L Feet and Hanger Bolt Kit Trapezoidal Metal Roof Solar Mounting System
Application	Pitched Roof
Roof Type	Trapezoidal Metal Roof
Tilt Angle	0° to 15°
Wind Speed	60 m/s
Snow Load	1.4 KN/m ²
Solar Panel	Framed and Frameless
Panel Layout	Portrait or Landscape
Design Standard	AS/NZS 1170, DIN 1055, JIS C8955: 2017, International Building Code IBC 2009
Material	Structure: Al6005-T5(Anodized) Components: SUS304 & Al6005-T5(Anodized)
Warranty	10 year

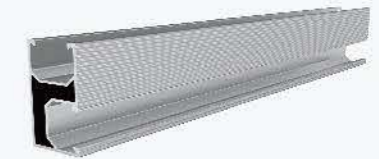
Components



1 L Feet Kit



2 Hanger Bolt Kit



3 Rail



4 Rail Splice

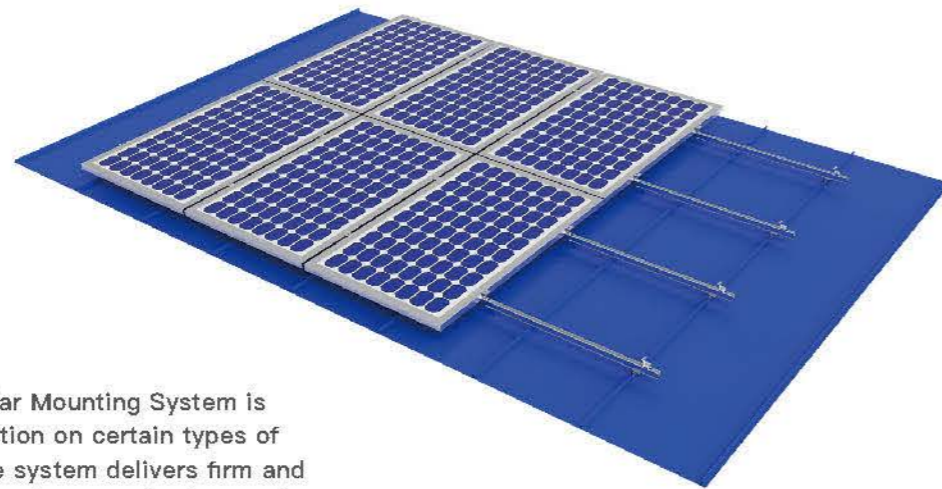


5 End Clamp Kit



6 Middle Clamp Kit

AS Kliplik Metal Roof Solar Mounting System



AS Kliplik Metal Roof Solar Mounting System is designed for solar installation on certain types of color steel metal roof. The system delivers firm and stable fixation between metal roof and solar panels. The non-penetrating design of kliplik ensures water-proof performance of the whole mounting system.

Advantages

- ◆ A range of readily-designed kliplik applicable for different types of color steel metal roof.
- ◆ Kliplik customization service according to specific project requests.
- ◆ Compatible to most framed and frameless solar panels.
- ◆ Pre-assembled kits ensures more efficient installation.

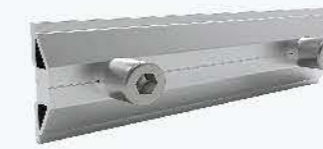
Specification

Product	AS Kliplik Metal Roof Solar Mounting System
Application	Pitched Roof
Roof Type	Certain Types of Color Steel Metal Roof
Tilt Angle	0° to 15°
Wind Speed	60 m/s
Snow Load	1.4 KN/m ²
Solar Panel	Framed and Frameless
Panel Layout	Portrait or Landscape
Design Standard	AS/NZS 1170, DIN 1055, JIS C8955: 2017, International Building Code IBC 2009
Material	Structure: Al6005-T5(Anodized) Components: SUS304 & Al6005-T5(Anodized)
Warranty	10 year

Components



1 Rail



2 Rail Splice



3 End Clamp Kit



4 Middle Clamp Kit



5 Rail Fastener



6 Kliplik 01



7 Kliplik 02



8 Kliplik 03



9 Kliplik 04



10 Kliplik 05



11 Middle Clamp Kit



12 Kliplik

AS Mini-rail Kit Trapezoidal Metal Roof Solar Mounting System



AS Mini-rail Kit Trapezoidal Metal Roof Solar Mounting System is designed for solar installation on trapezoidal color steel metal roof. With mini-rail design, the system still delivers firm and stable fixation between metal roof and solar. As a cost-effective mounting solution, the mini-rail kit greatly reduces overall project cost.

Advantages

- ◆ Innovative mini-rail design delivers strong and stable fixation while delivering a cost-effective solution.
- ◆ Simple but firm design.
- ◆ Compatible to most framed and frameless solar panels.
- ◆ Pre-assembled before shipment, saving on-site installation time and labor cost.

Specification

Product	AS Mini-rail Kit Trapezoidal Metal Roof Solar Mounting System
Application	Pitched Roof
Roof Type	Trapezoidal Metal Roof
Tilt Angle	0° to 15°
Wind Speed	60 m/s
Snow Load	1.4 KN/m ²
Solar Panel	Framed and Frameless
Panel Layout	Portrait or Landscape
Design Standard	AS/NZS 1170, DIN 1055, JIS C8955: 2017, International Building Code IBC 2009
Material	Structure: Al6005-T5(Anodized) Components: SUS304 & Al6005-T5(Anodized)
Warranty	10 year

Components



1 Mini-rail Kit



2 End Clamp Kit



3 Middle Clamp Kit