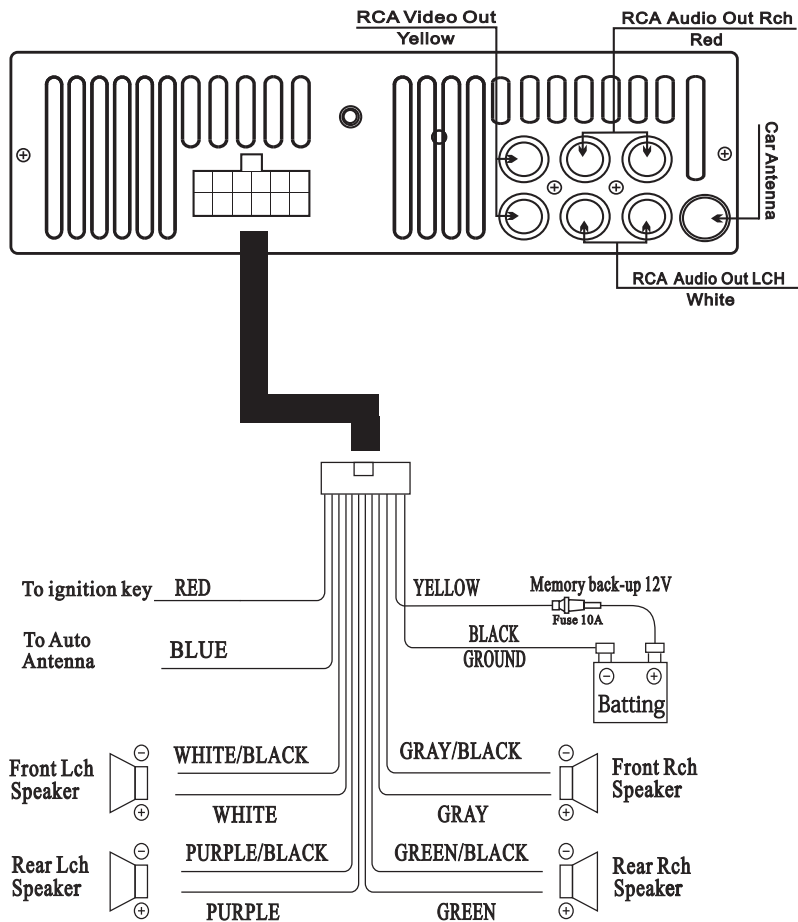


Wiring Diagram

English



SMS-D005

OWNER'S MANUAL

English

CAR MOBILE ENTERTAINMENT

INSTRUCTION MANUAL CAR ENTERTAINMENT SYSTEM

**CAR STEREO
FM RADIO
DVD/MP4/MP3/CD/VCD/WMA MEDIA PLAYER**



Welcome!

English

Thank you for purchasing our company multimedia player!
To operate the unit correctly, please read the owner's manual carefully before using the unit. Keep these instructions and retain this booklet for future reference.

CONTENTS

Contents.....	1
Notes on Installation.....	2
Bluetooth Instructions	3
Location of the Panel Control.....	4
Installation.....	5
Specification.....	6

Specification

English

General

Power Requires.....12V DC
Load Impedance.....4-8 Ω
Max.Power Output.....50Wx4
Tone Controls ± 8 dB(Bass 100Hz,Treble 10KHz)
Dimensions.....Approx.192x178x50mm(dxwxh)
Mounting Dimensions.....Approx.169x182x53mm(dxwxh)
Weight.....Approx.1.12kg

DVD Deck Section

Discs Played....DVD,VCD1.0/1.1/2.0/3.0/MP3,CD,CD-R,CD-RW,PICTURE-CD
Video System.....AUTO/PAL/NTSC
Mounting Angle.....0TO $\pm 30^\circ$

Video Section

Video System.....4:3 Letter Box and 4:3 Pan Scan
Video Output level.....1.0Vp-p 75 ohms
Horizontal Resolution.....500

Audio Section

Maximum Output level.....2Vrms(± 3 dB)
Frequency Response.....20 to 20KHz
Signal-to-noise Ratio.....85dB
Separation.....80dB

AM Tuner Section

Frequency Range.....522-1620(Europe/China),530-1710(U.S.A)
IF Range.....450KHz
Usable Sensitivity(-20dB)..... 25dB

FM Tuner Section

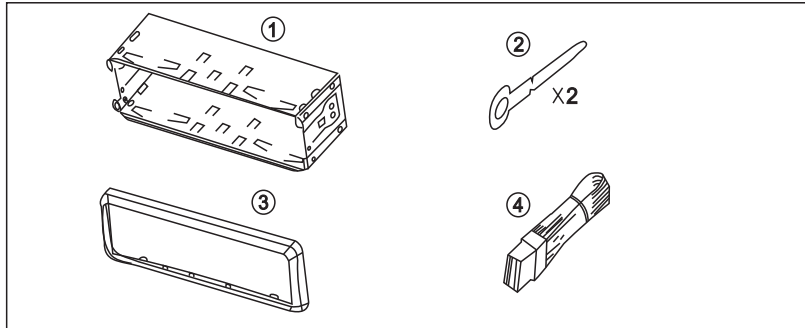
Tuning Range.....87.5- 108(Europe/china),87.5-107.9(U.S.A)
IF Range.....10.7KHz
Usable sensitivity(-30dB).....15dB
Signal-to-noise Ratio.....60dB
Stereo Separation.....30dB(1KHz)
Frequency Response.....30-15000Hz

★ Note:Due to continuous product improvement,specifications and design are subject to change without notice.

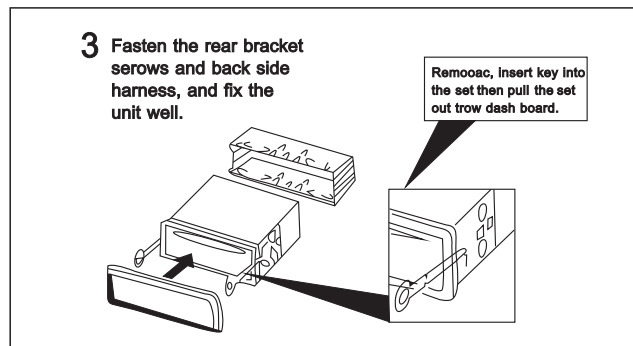
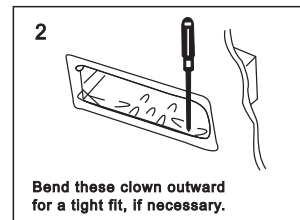
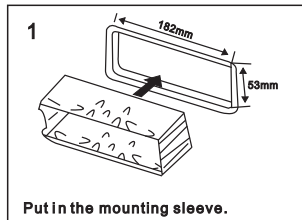
Installation

English

Parts List (The number in the list are keyed to those in the instructions)



Mounting Example



5

Notes on installation

English

- ☞ The unit is designed for 12V DC.negative ground operation System only.Before intalling, the unit make sure your vehicle is connected to DC 12V negative round electrical System.
- ☞ Do not block vents or radiator panels. Blocking them will cause heat to build up inside and may result in fire.
- ☞ After the completion of the installation and begin to play the unit(including replacing the battery),please press the RESET button on the front panel with pointed objects (such as ball-point pen)to set the unit to initial status.
- ☞ The negative battery Terminal must be Disconnect Tedbeforemaking connccions, which can reduce damaging the unit dun short circuit.
- ☞ Be sure to connect the color coded leads correctly according to the diagram. Incorrect connections may cause the unit malfunction or damage the vehicle's electrical system.
- ☞ Google &Apple Store to download the app
- ☞ Be sure to connect the speakr(-) leads to the speaker(-) terminal. Never connect the left and right channel speaker cables each other or to the vehicle body.



2

Bluetooth Instructions

English

1. Mobile search Bluetooth device "CAR BT" click on the connection. When the connection is successful, the "PHONE" is displayed on the display screen, and the Bluetooth icon is always bright.
2. When calling, answer the phone by pressing the APS key of the operation interface [the telephone icon], and end the call by pressing the BAND key [the telephone icon].
3. Press MODE button to switch to BT mode, you can click music app on your mobile phone to play music, and the word "MUSIC" will be displayed on the host. At this time, you can select and play music using the top and bottom selection function keys on the operation panel. Press pause/play key to achieve music pause or play.
4. Press the APS button for 3 seconds to exhale the last outgoing contact phone; click this button to realize the output of the phone horn or the host horn.

USB charging function for mobile phone

Plug the USB port of your mobile phone charging cable directly into the USB port of this product, and then connect your mobilephone. This product will automatically charge your mobile phone.

APS:

Bluetooth status, press this button to answer the phone.

BAND:

Bluetooth status, press this button to end the call.

NEXT:

Bluetooth status, press this button to download the selection.

PREV:










Bluetooth status, press this button to select music upward.

1:

Bluetooth status, press this button to pause/play music.

Button Function Fescription

English

- | | | |
|----|---|--|
| 1 | POWER/PWR/  | : Power Button |
| 2 |  | : Eject Button |
| 3 | MUTE/MUT/  | : Mute Button |
| 4 | RESET/RES | : Reset Button |
| 5 | BAND/  | : Band Select or (Bluetooth mode, press this button to end the call) |
| 6 | EQ | : EQ Button |
| 7 | VOL+/VOL- | : Volume Control |
| 8 |  /NEXT/SEEK+ | : Manual(Seek)Up/Disk track down (Fast forward) button |
| |  /PREV/SEEK- | : Manual(Seek)Down/ Disk track up (Fast backward)button |
| 9 | CLOCK/CLK/  | : Clock Button |
| 10 | LOUD | : Loud Button |
| 11 | SEL | : Setting the sound Characteristics |
| 12 | APS/  | : Radio APS Button or Bluetooth mode, press this button(APS) to answer the call |
| 13 | MODE/MOD | : Mode Switch |
| 14 | 1 | : RADIO MODE—Number Button
PLAY MODE—  PLAY/PAUSE Button |
| 15 | 2 | : RADIO MODE—Number Button
PLAY MODE—INT Button |
| 16 | 3 | : RADIO MODE—Number Button
PLAY MODE—RPT Button |
| 17 | 4 | : RADIO MODE—Number Button
PLAY MODE—RDM Button |
| 18 | 5 | : RADIO MODE—Number Button
PLAY MODE—Stop |
| 19 | 6 | : RADIO MODE—Number Button
PLAY MODE—Show track information |