

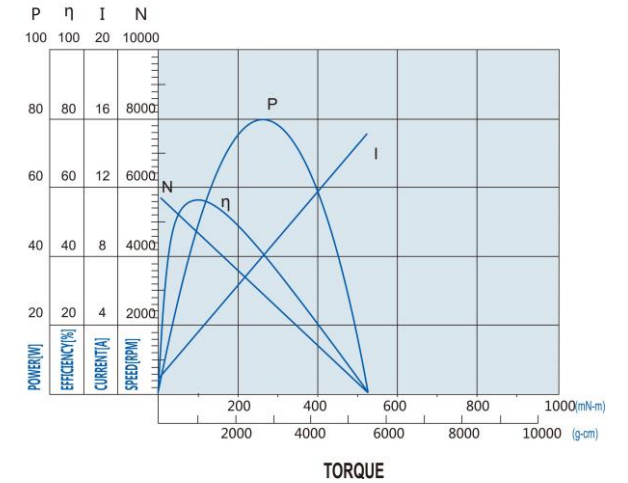
Moldel no.: CF109HSDL001



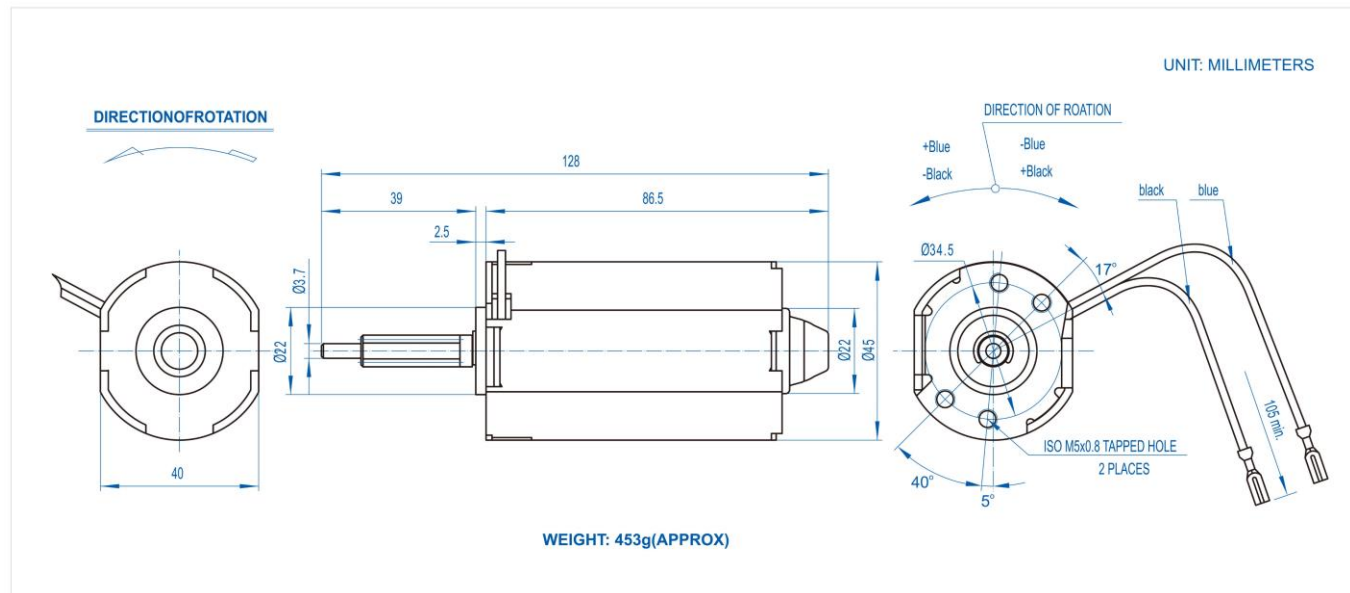
Rated voltage: DC24V
Operating range: DC21V-26V
No load current: <0.85A
No load speed: 5800rpm/min.
Current with load: <3.6A
Speed with load: 4700rpm/min.
Max. output: 49.16W
Max Efficiency: 50%
Starting torque: >450.0 mN.m
Starting current: 14A

CF109HSDL001

DC24.0V



Dimensions



Main applications:

1. Intelligent furniture:
Actuator drive system for electric beds & chairs or adjustable tables.